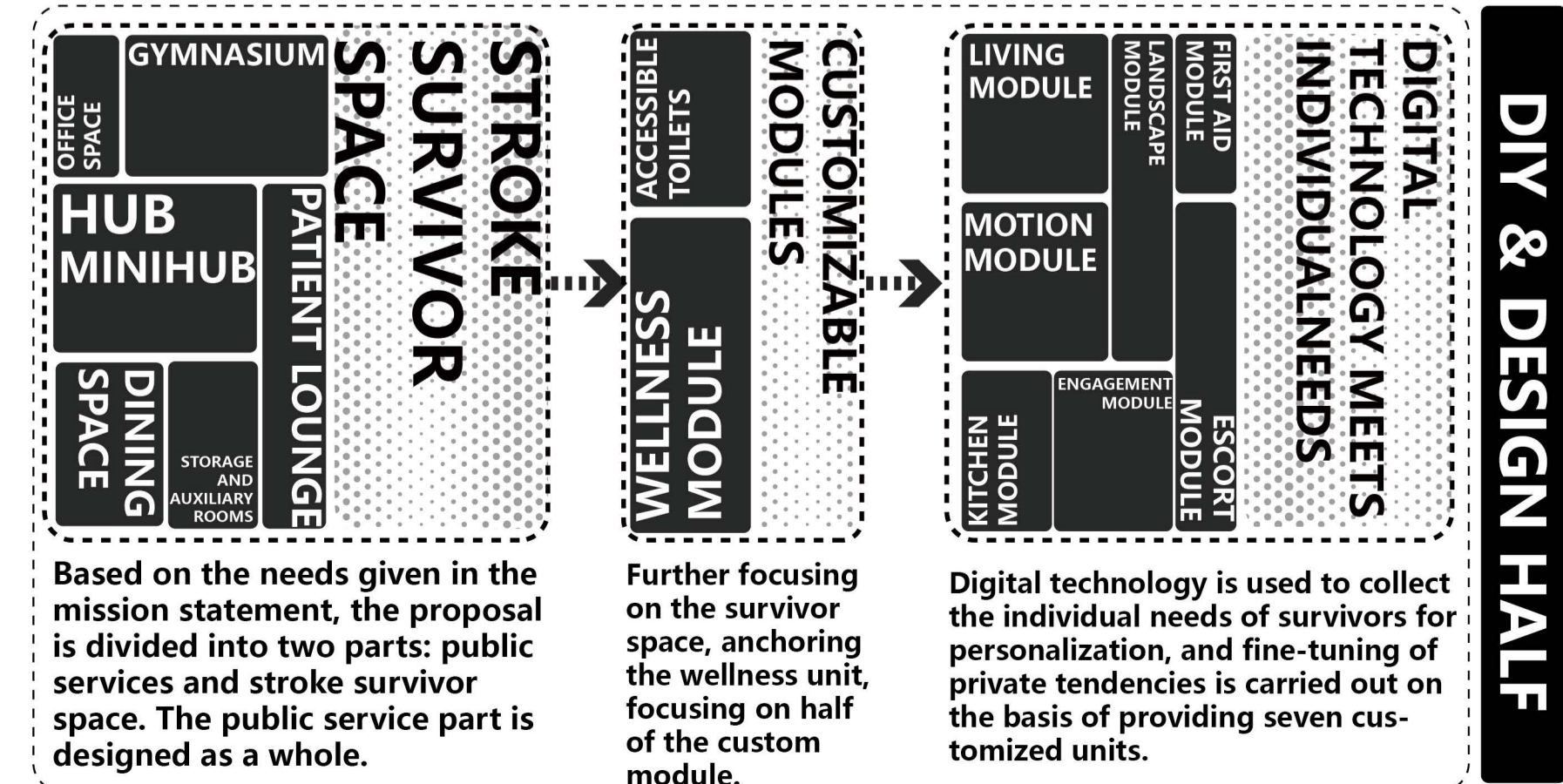
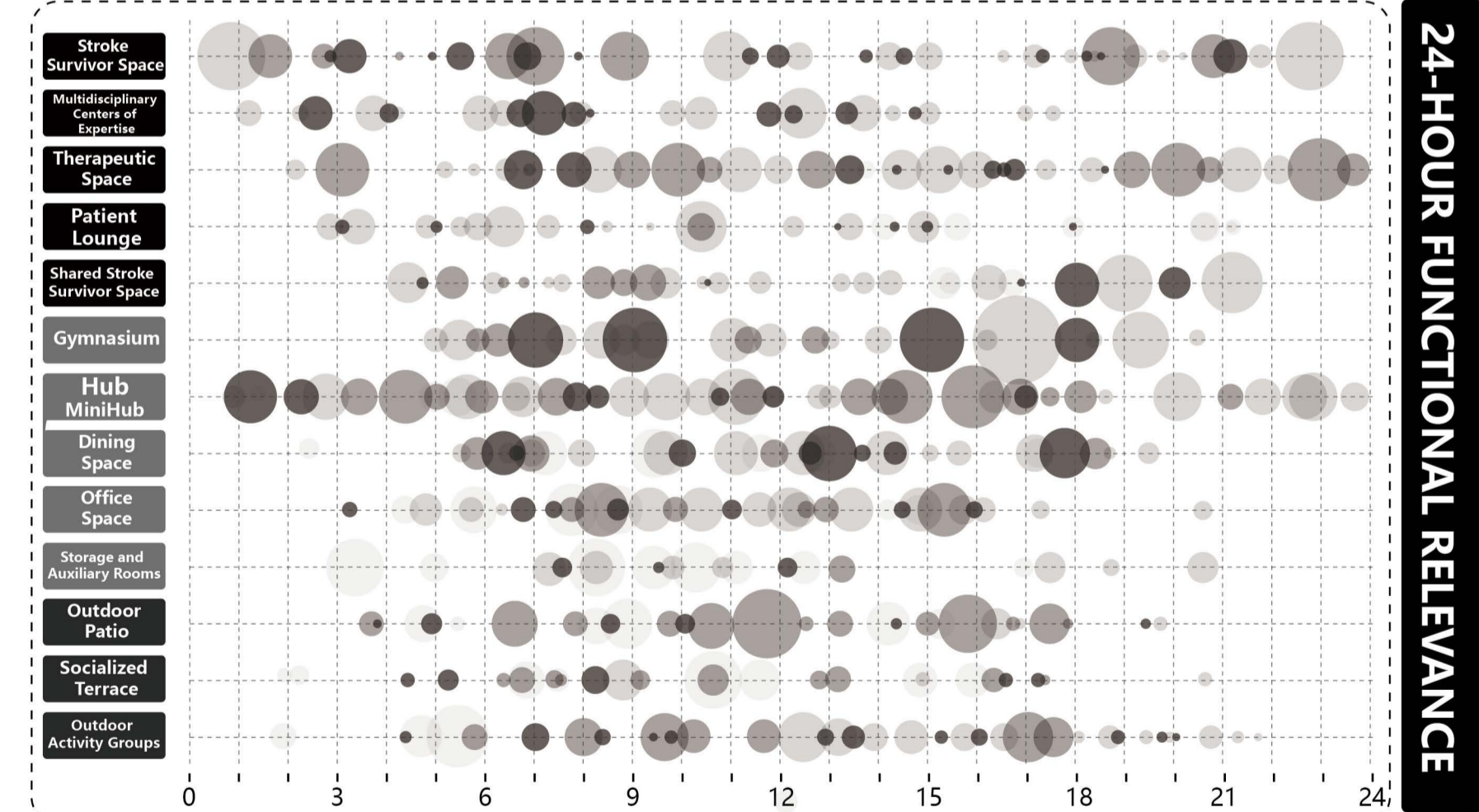
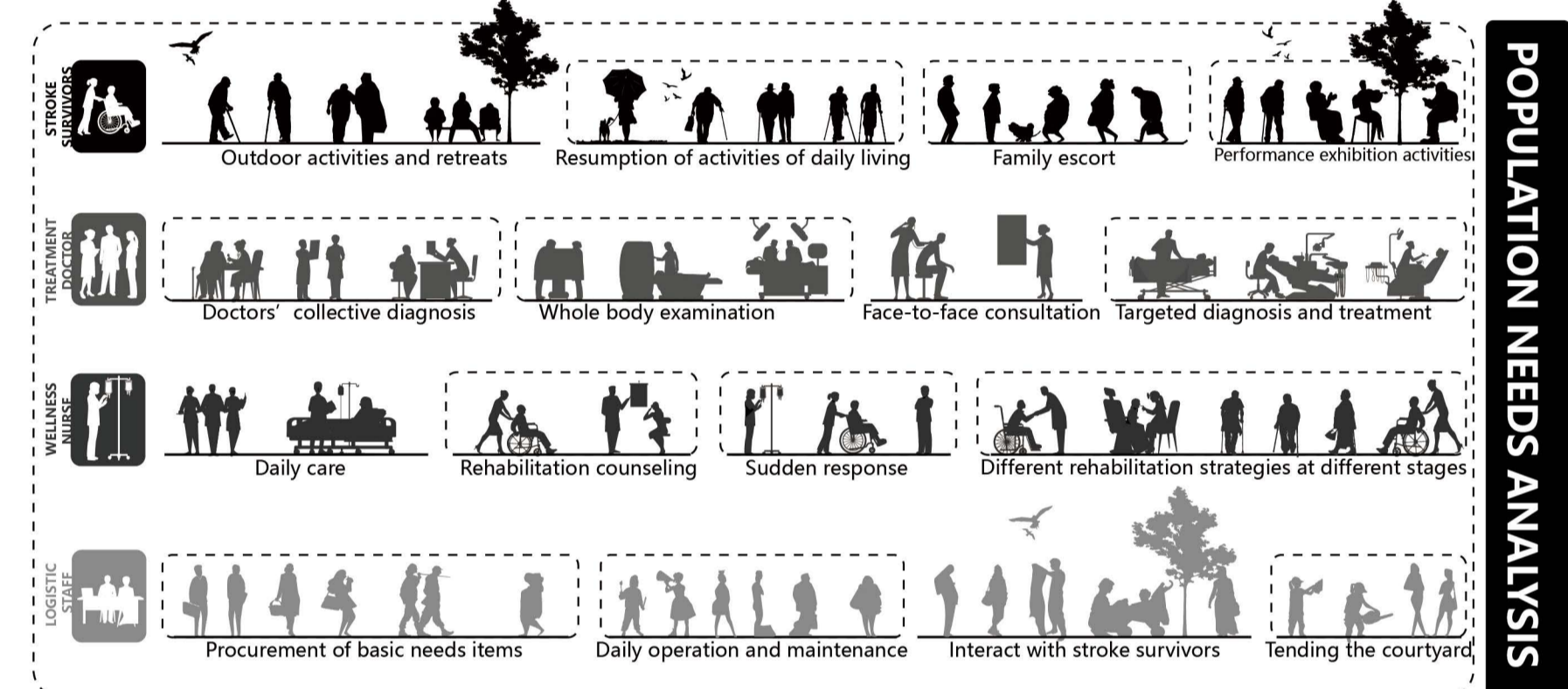
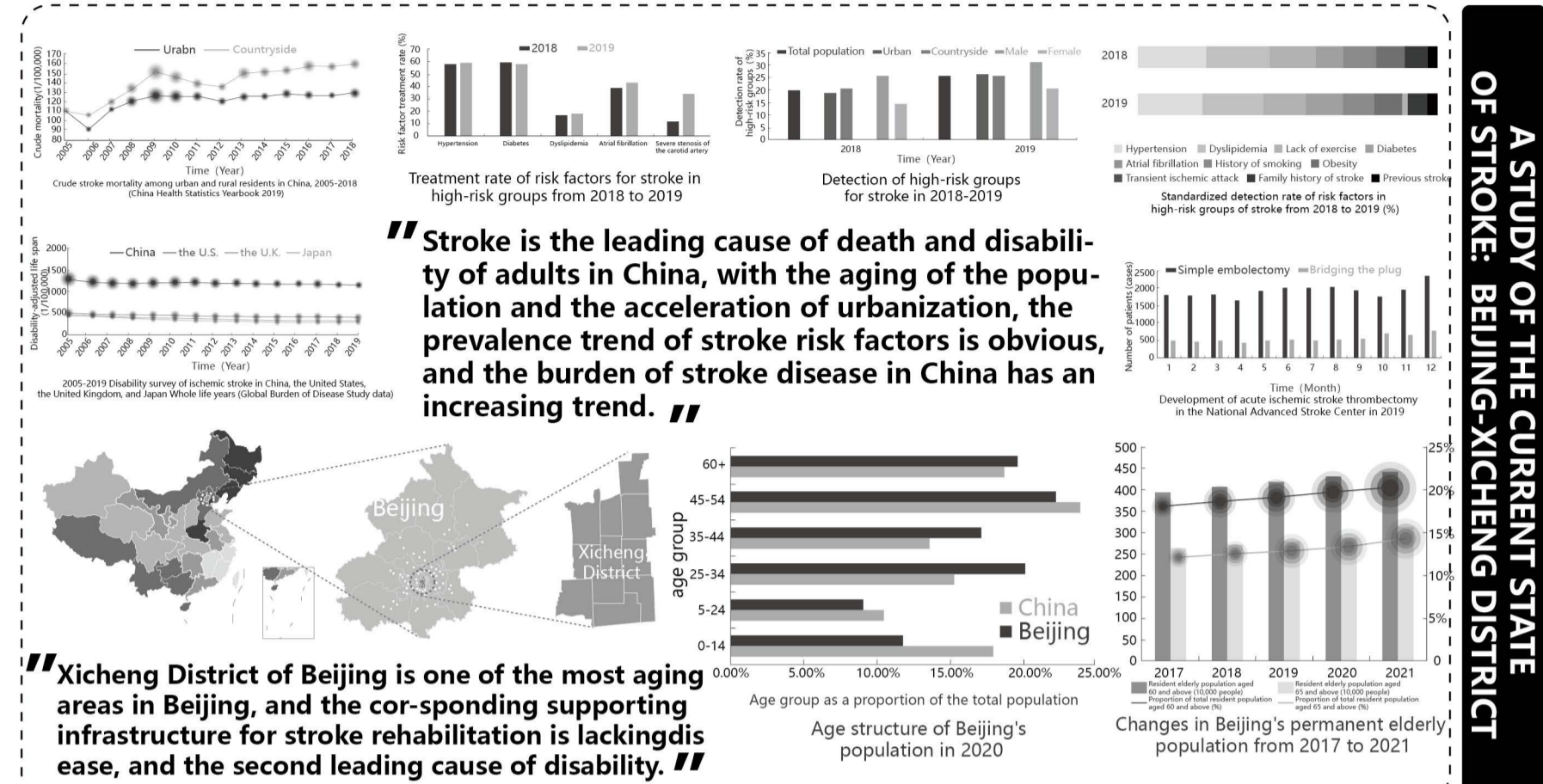
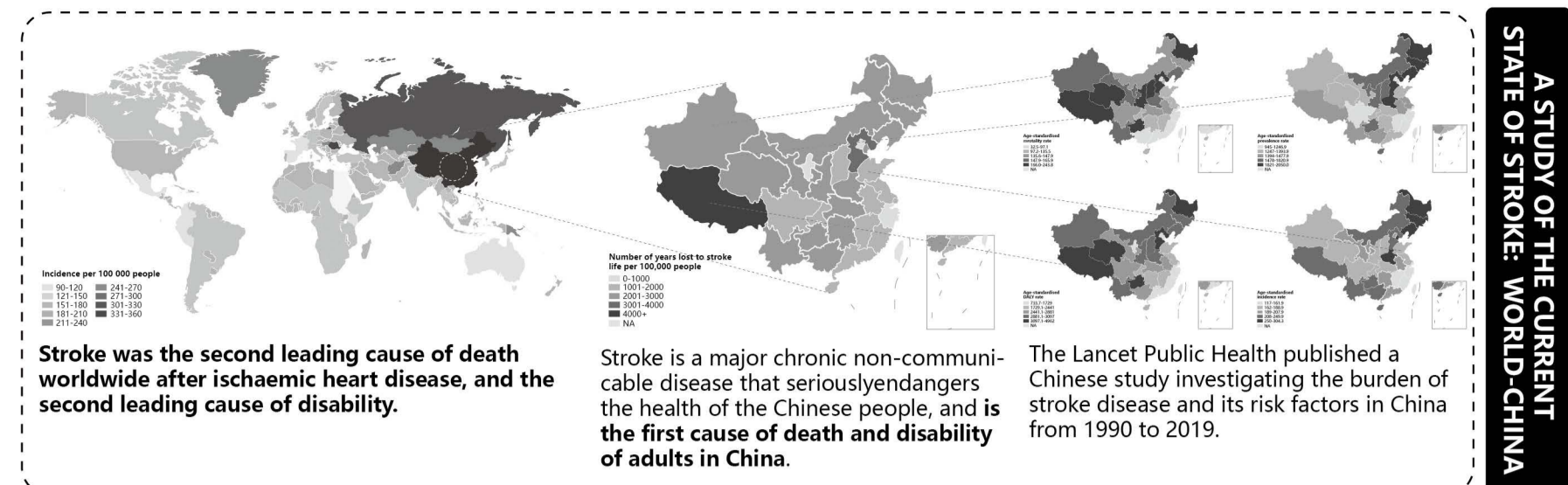
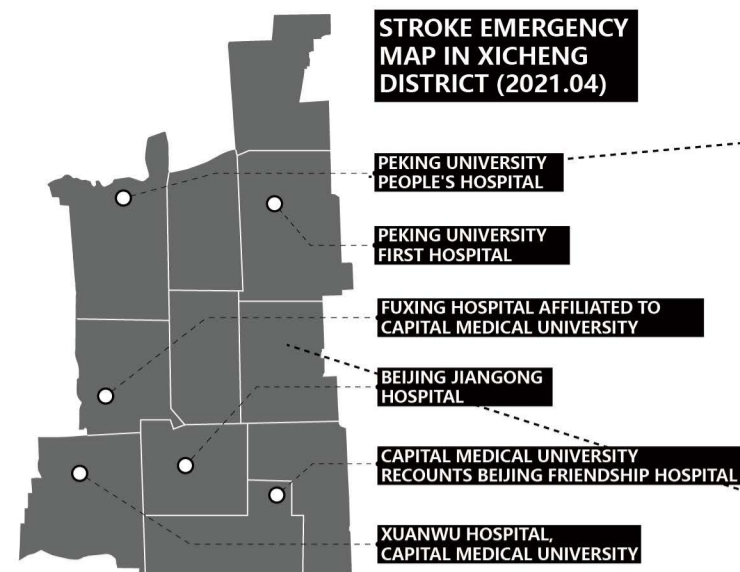


WARM AROUND, LIFE AROUND
NEXT GENERATION OF STROKE REHABILITATION CENTRES

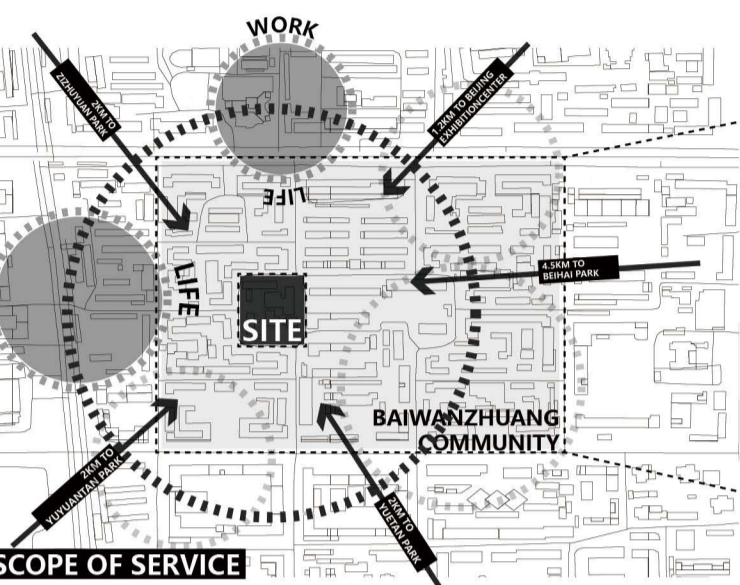
An aerial perspective of a complex architectural model. The structure is composed of a grid of interconnected wooden platforms and walkways. Large, white, stylized trees are planted in various sections of the grid. Numerous small, red human figures are placed throughout the model to provide a sense of scale and show how the space might be used. The design features a mix of solid wooden surfaces, slatted screens, and open areas with white flooring. The overall impression is one of a modern, open, and integrated living or working environment.



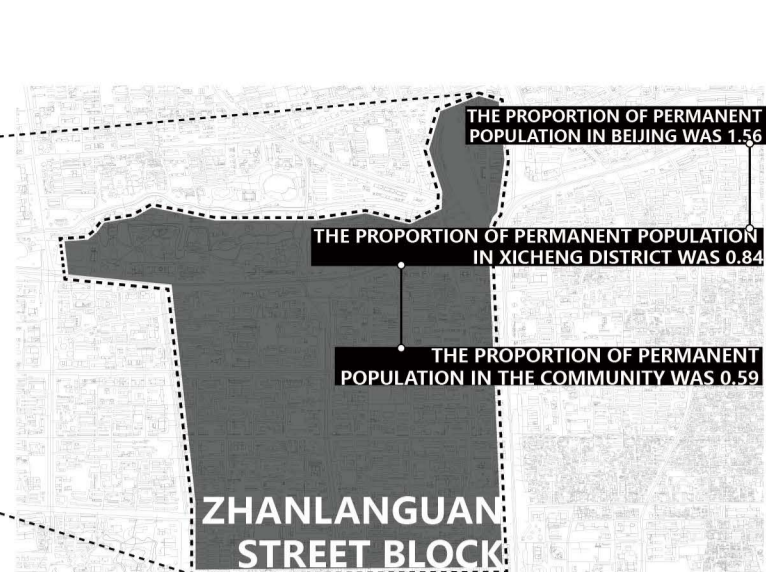


SCOPE OF STRICT

Considering that the aging of the population in Xicheng District is relatively serious, the demand for stroke rehabilitation centers in Xicheng District is obvious.

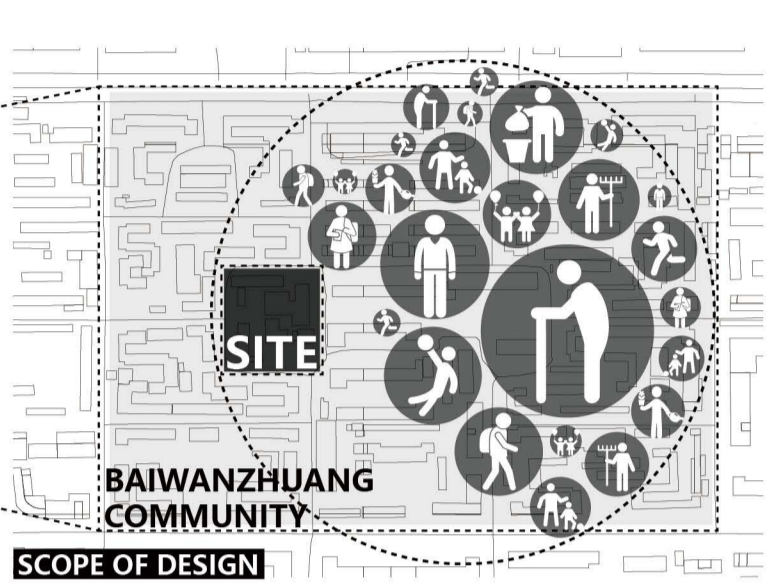


We wondered if we could introduce this landscape healing into our next generation of stroke survivors rehabilitation center.



SCOPE OF RESEARCH

The population density of Xicheng District is 25,767 people/square kilometer, indicating that the overall population density of Millionzhuang Community is low, which is consistent with the lower plot ratio.



We hope our program is a combination of community service functions, a comprehensive that can give feedback to the community, not just for stroke survivors.

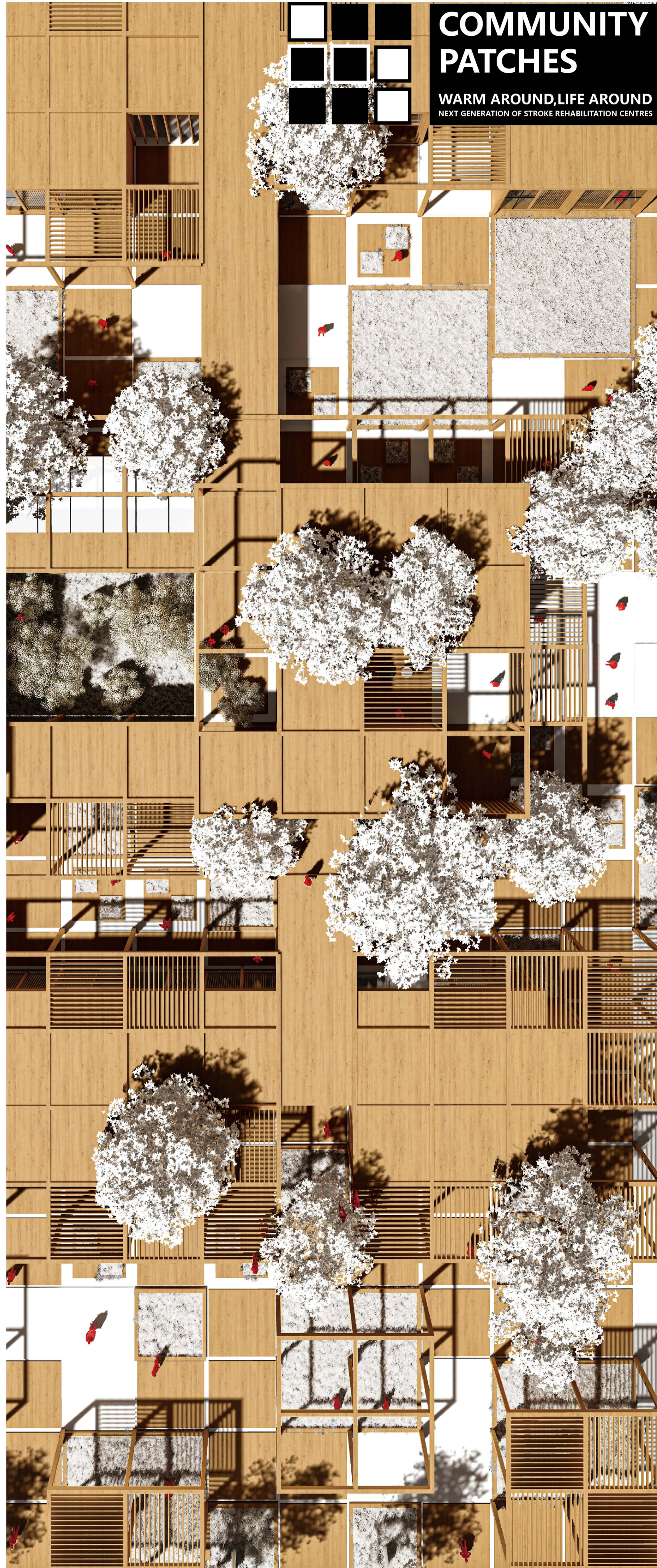
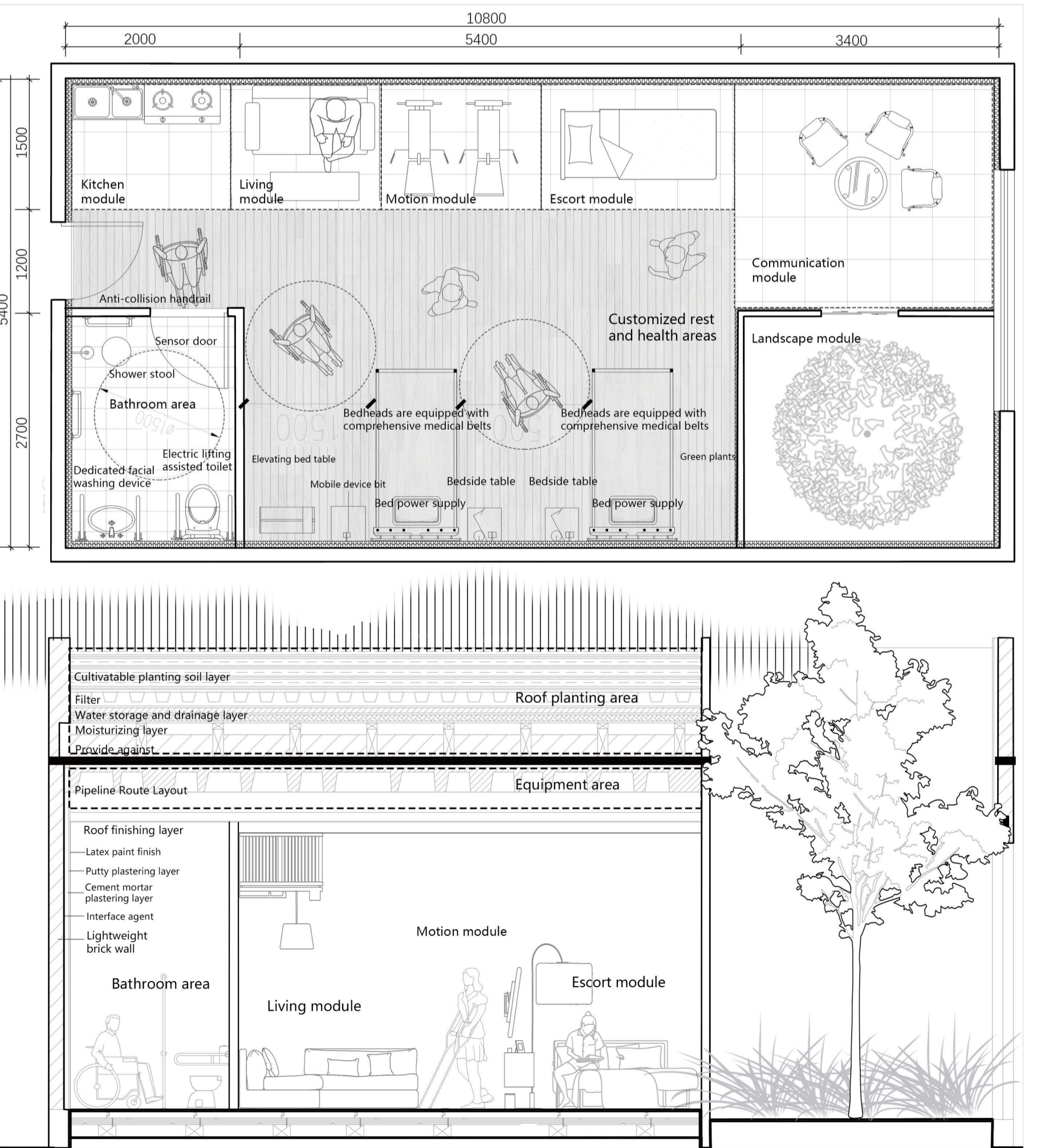
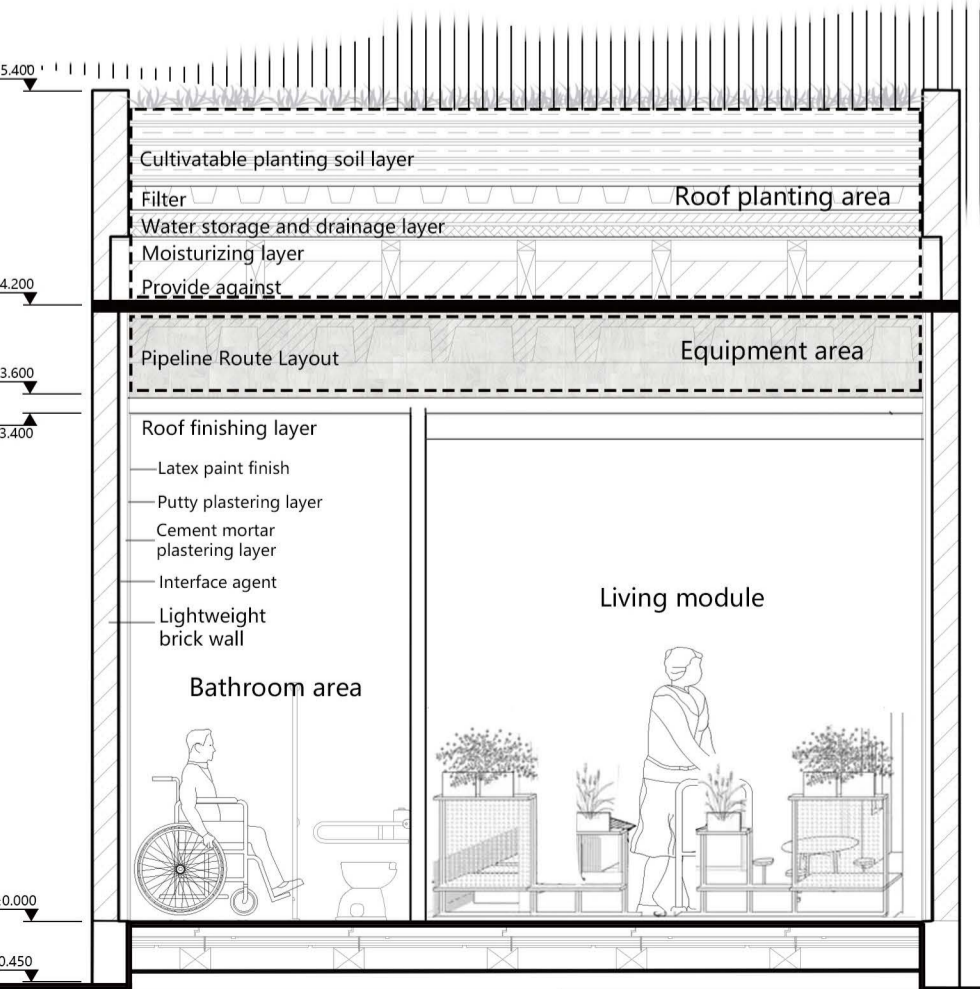
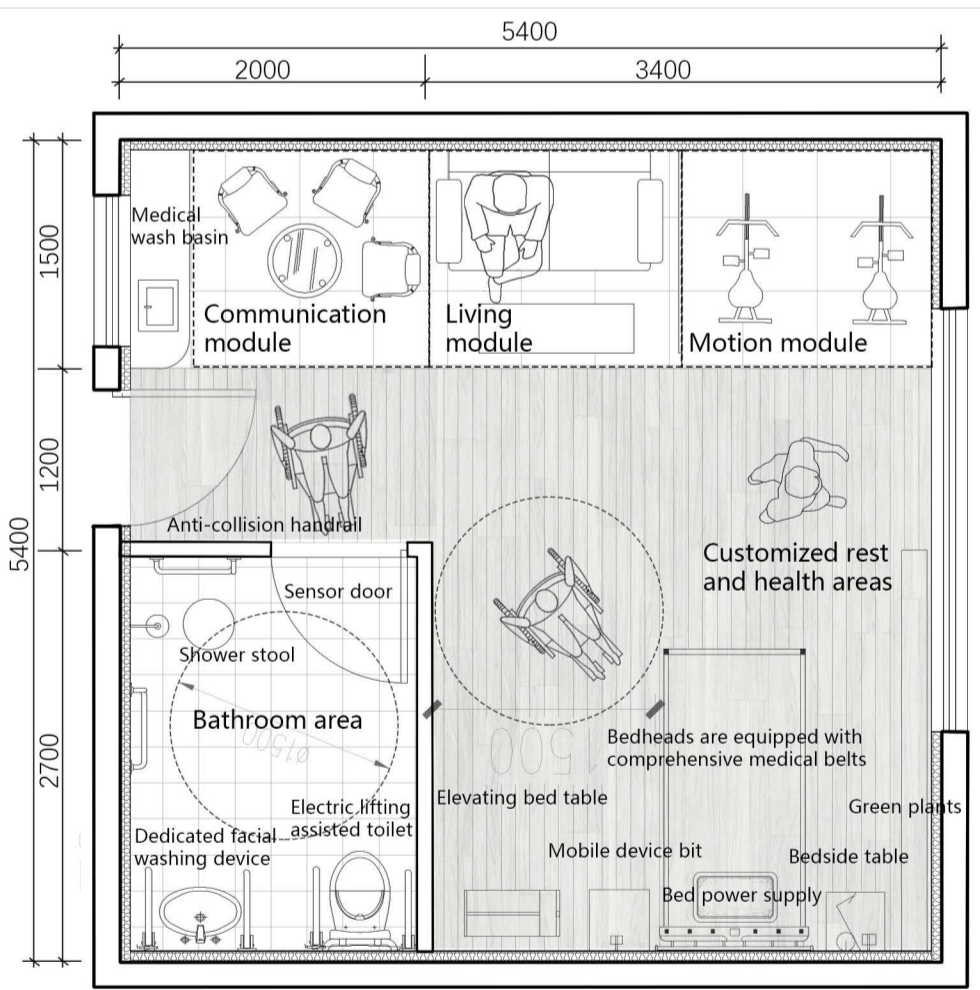
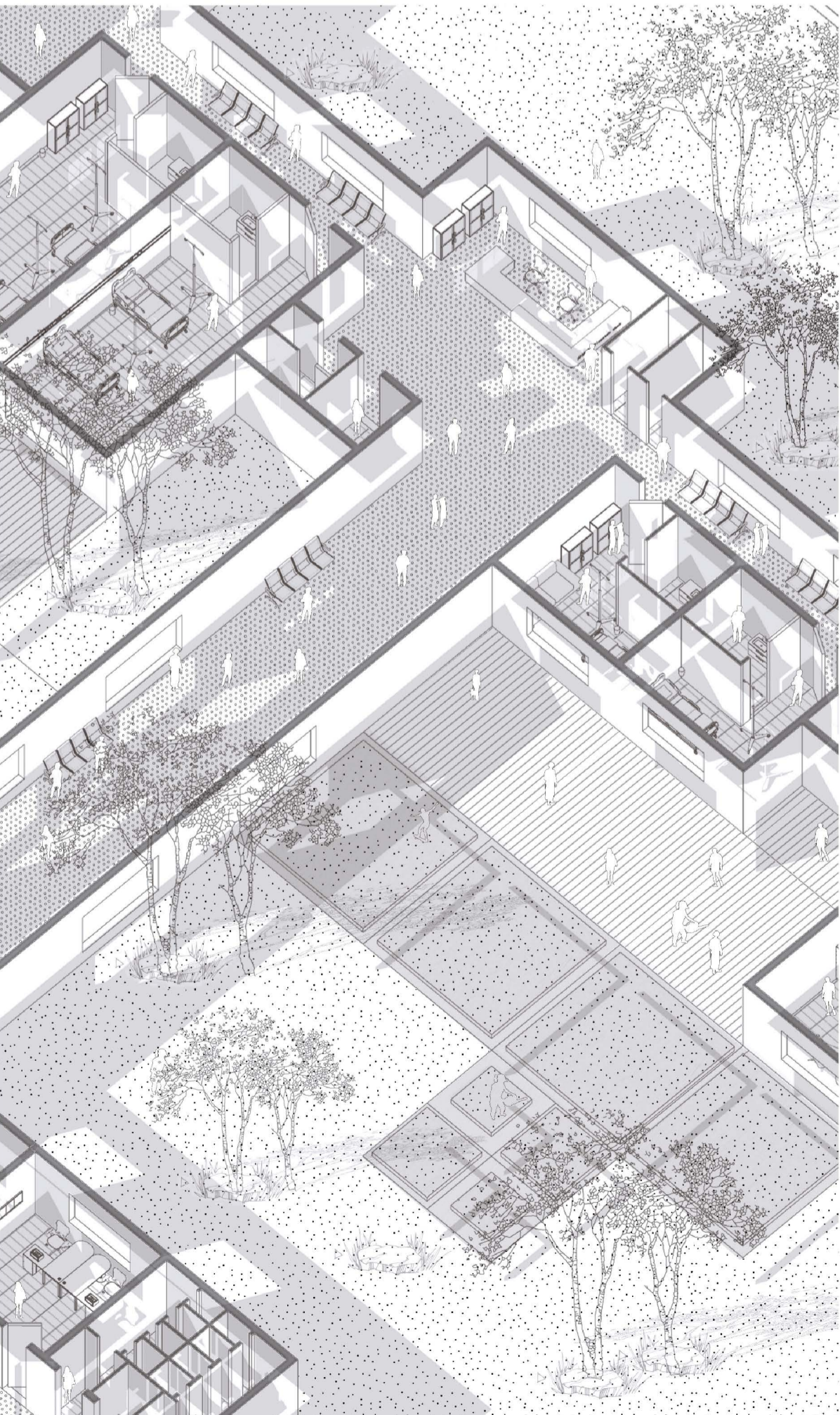
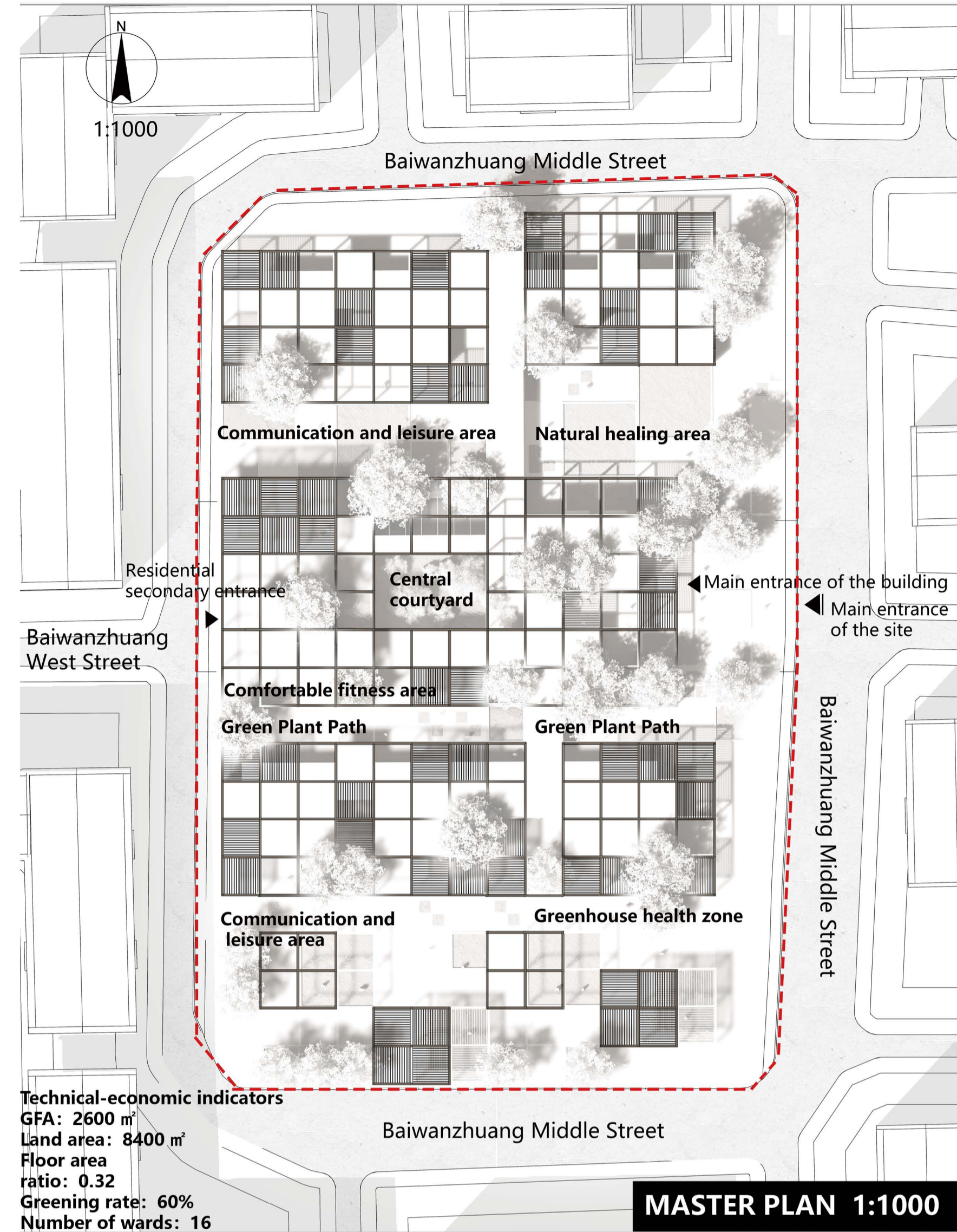
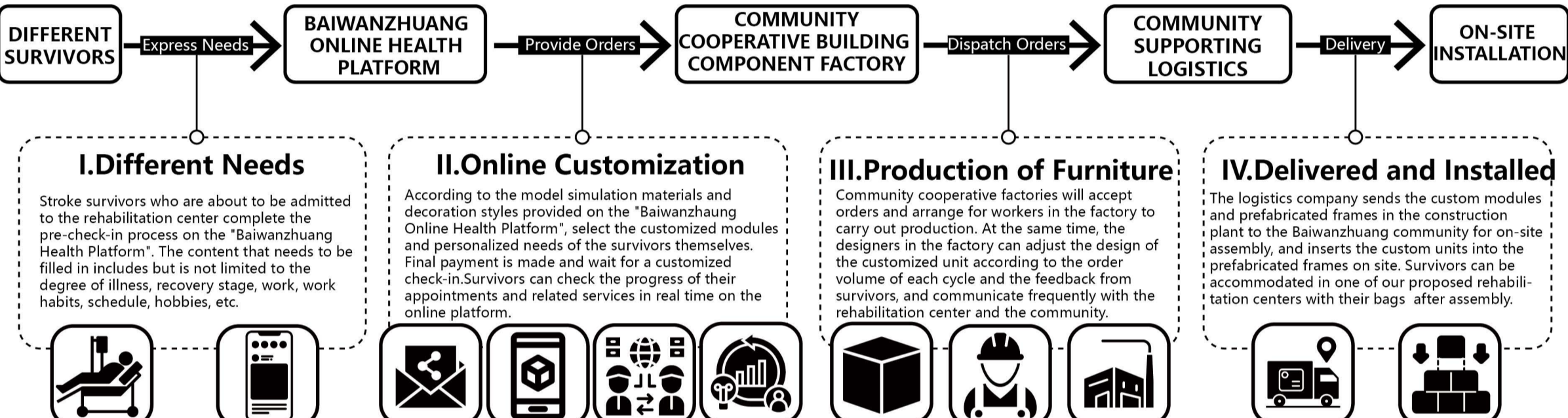


SCOPE OF STUDY

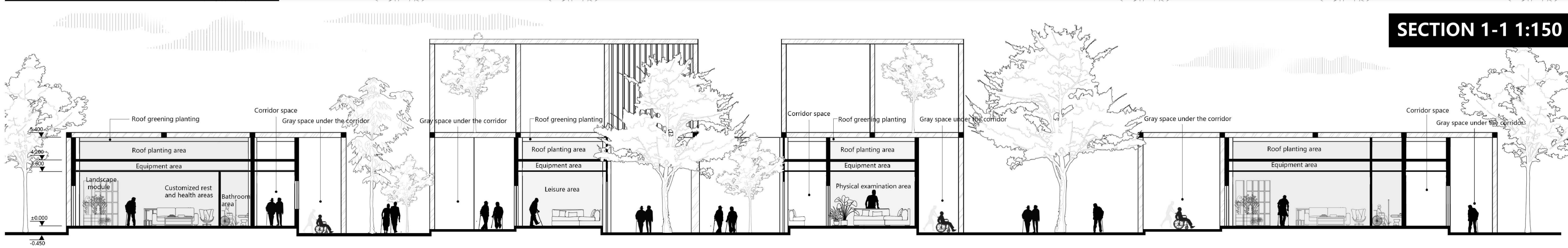
The outflow of population in the community of Million Zhuang was large, the popularity decreased significantly, and the overall trend of decline. The age structure of the community is aging and the population structure is heterogeneous.



This form of community farmland will also be embedded in our proposal as a highlight of our proposal for the residents of the Baiwanzhuang community.



WARM AROUND, LIFE AROUND
NEXT GENERATION OF STROKE REHABILITATION CENTRES



STROKE SURVIVOR ENTRANCE

8:30 AM

I am 67 years old and an old resident of the Baiwanzhuang community. At the end of March this year, I had a stroke. Moreover, I quickly made an appointment for a rehabilitation center on the "Million Zhuang Online Health Platform" and moved in in early April.

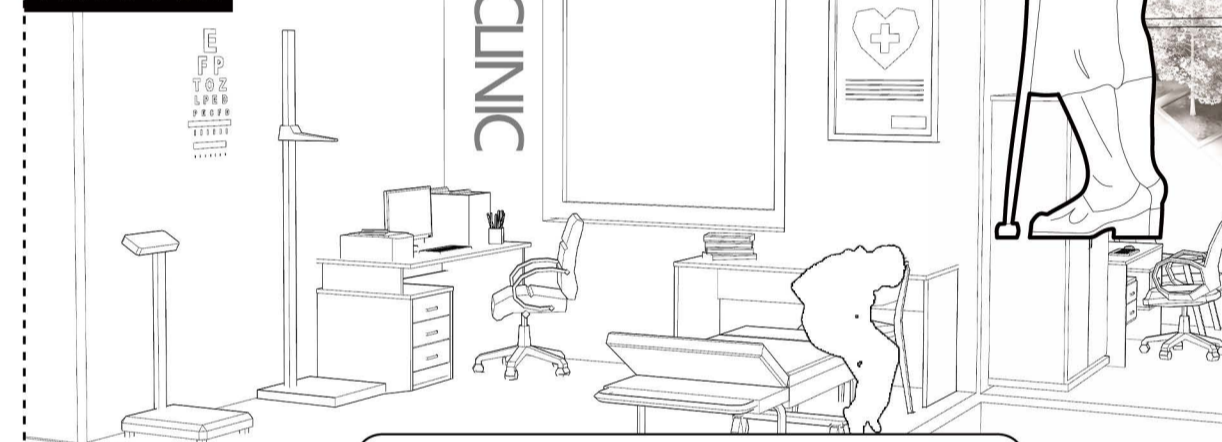


9:30 AM

I am about to retire, but unfortunately I still had a stroke before retirement. Do you want to quit drinking!!! I work in the nearby China Architecture Building and live in the Baiwanzhuang Community Stroke Survivors Rehabilitation Center, and I have no delay in recovering from work.

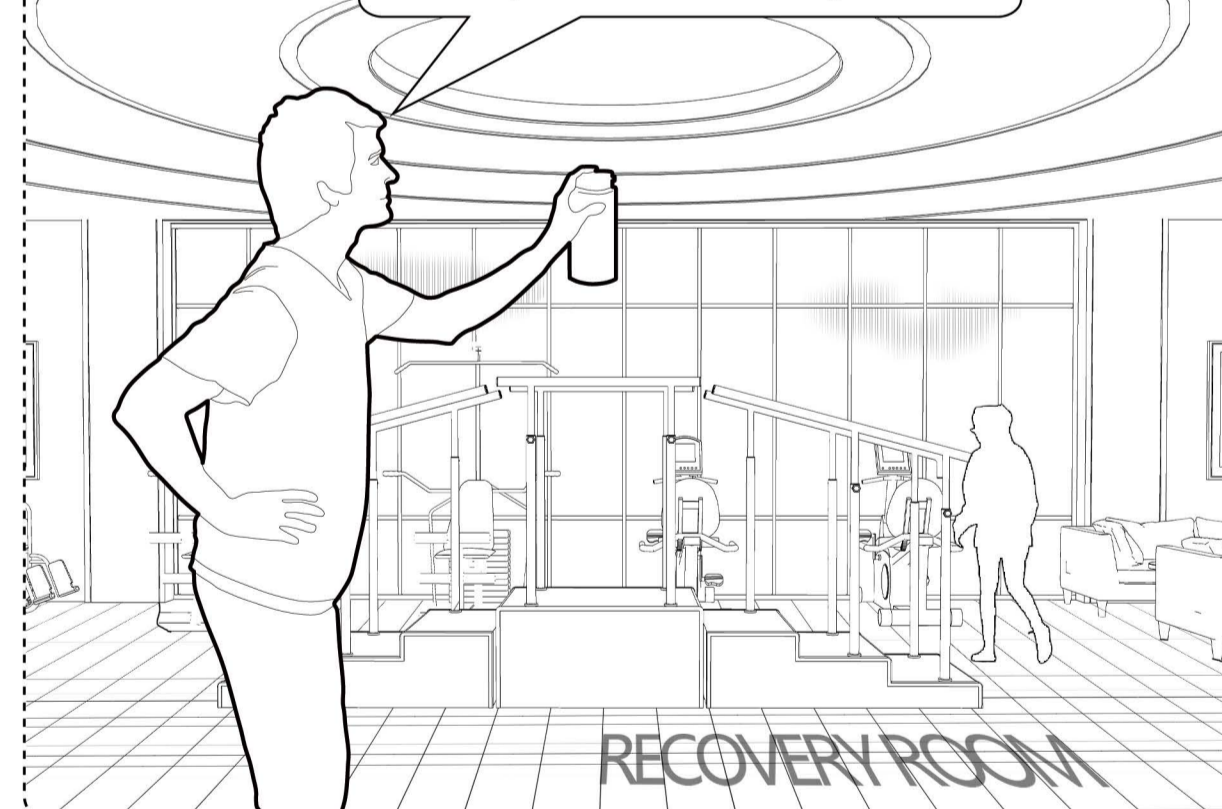


10:00 AM

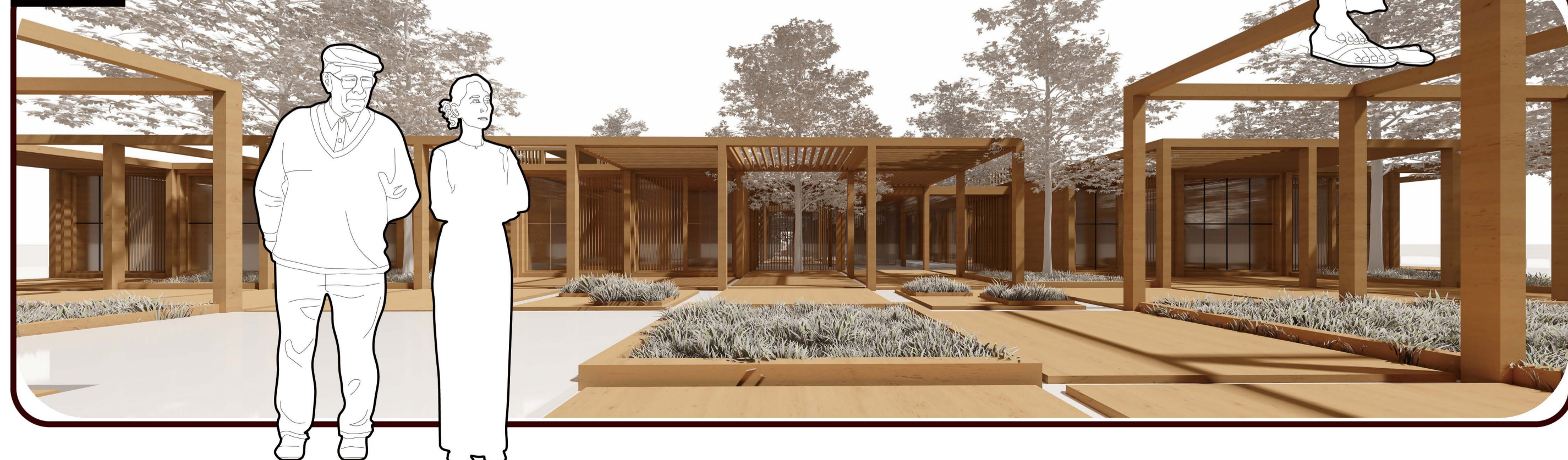


10:30 AM

Every day at 10 a.m., group rehabilitation starts to help us with state-of-the-art digital equipment such as VR simulations. For us stroke survivors, the main thing is to resume our daily lives. And the unique indoor and outdoor wellness landscape of the center has also helped us a lot in our recovery.



1:30 PM

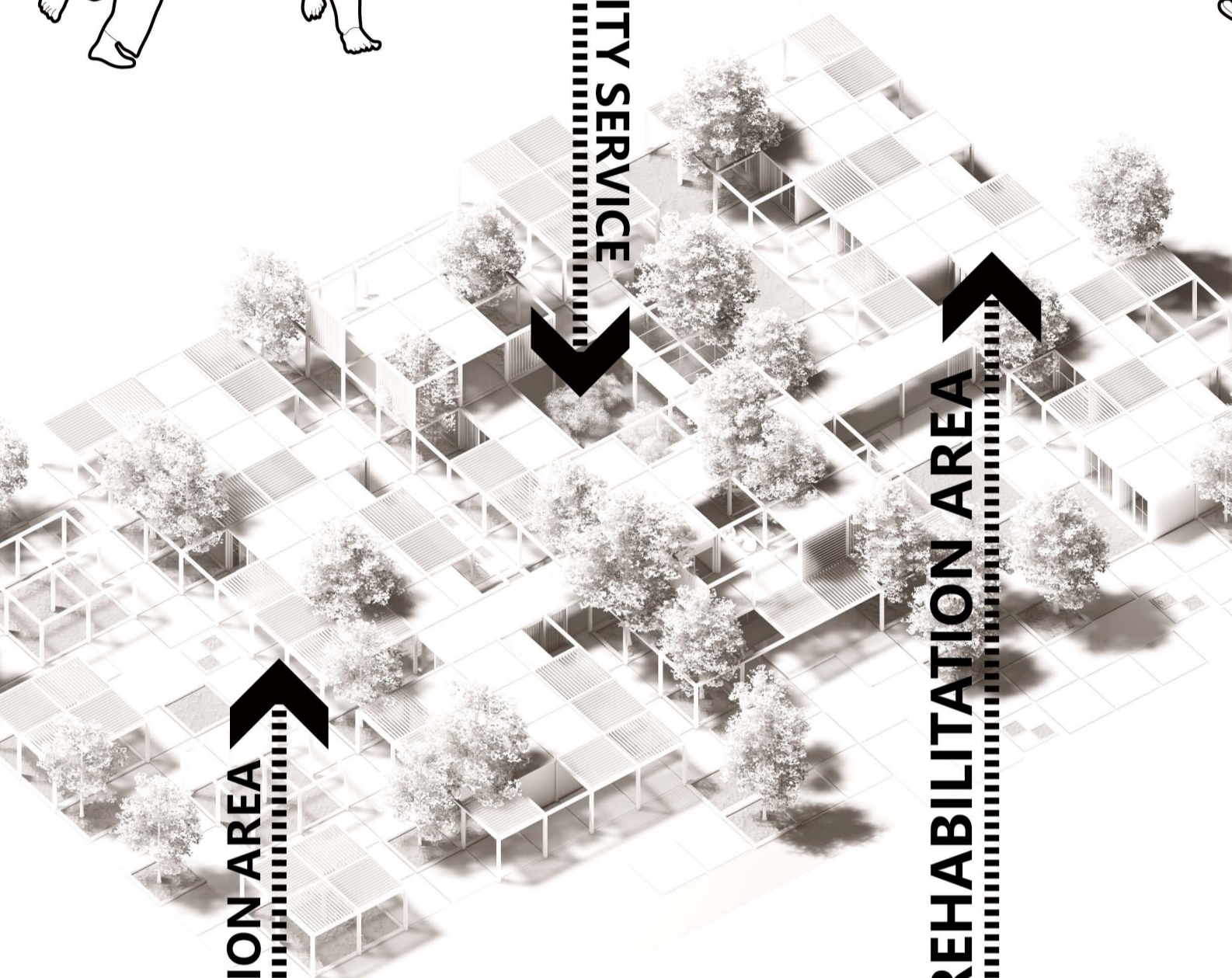


17:30 AM

COMMUNITY SERVICE

The physical examination center is a supplement to the lack of relevant health and medical facilities in the community of Million Zhuang. Residents of the Million Village community can come to the center regularly for physical examinations.

13:30 AM



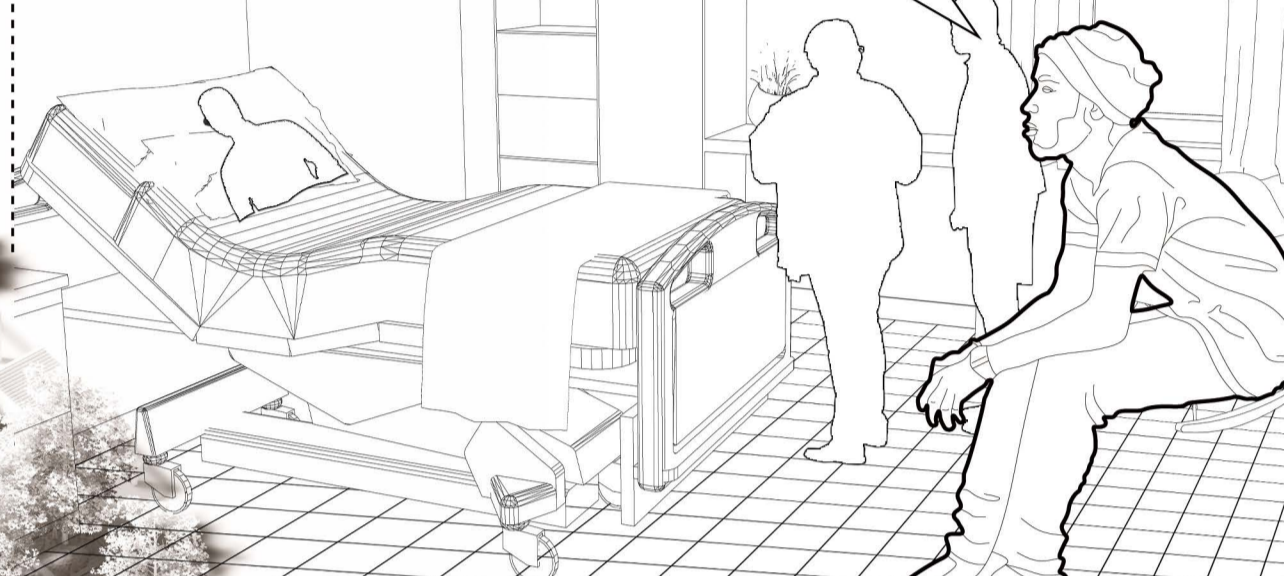
REHABILITATION AREA

REHABILITATION AREA

SSS-COMMUNITY-SSS

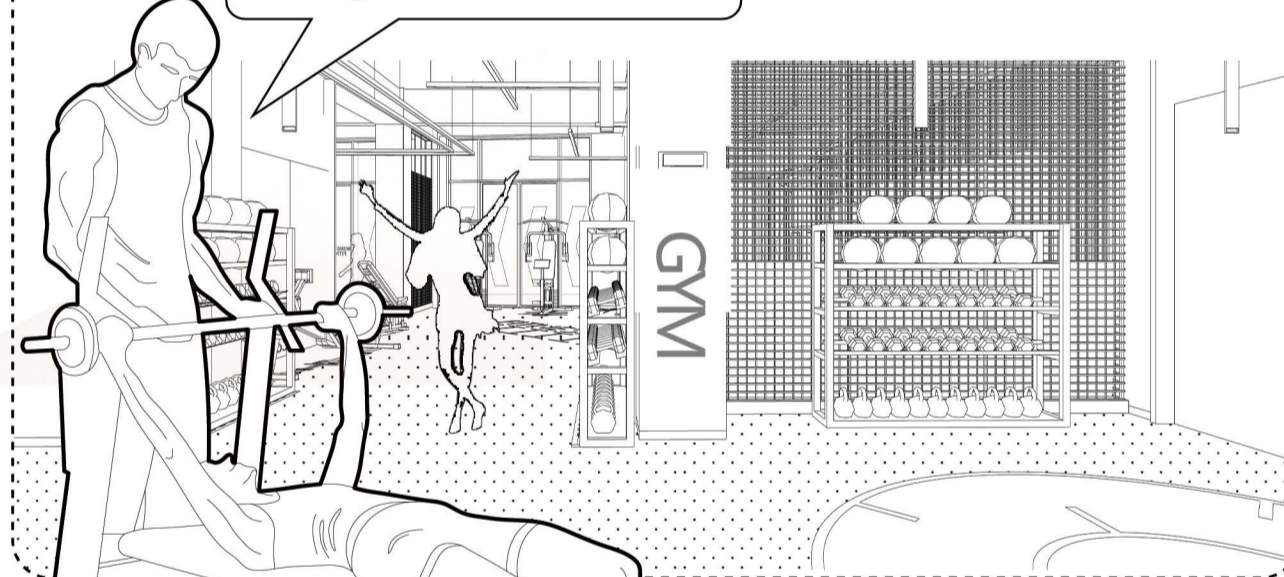
Reading in the evening in the sunlight garden is what I look forward to most every day. This leisure time reading by the atrium has been extremely helpful in my recovery. Because I was a person who loved reading when I was healthy.

18:45 AM



Every Sunday morning from 9:30-11:30 am is when the center's gym is open to the community. We meet on weekend mornings to work out at the center and enjoy the community's various digital technologies and themed activities.

9:30 AM



8:30 AM

I am an office worker renting a house in the Million Village community, and I can go to the center on weekends to carry out daily community activities. For example, eat breakfast, exercise or do some party activities. The center gives back to the community very well, and fills the real needs of the million Zhuang community.



COMMUNITY SERVICE ENTRANCE

COMMUNITY PATCHES

WARM AROUND, LIFE AROUND
NEXT GENERATION OF STROKE REHABILITATION CENTRES

