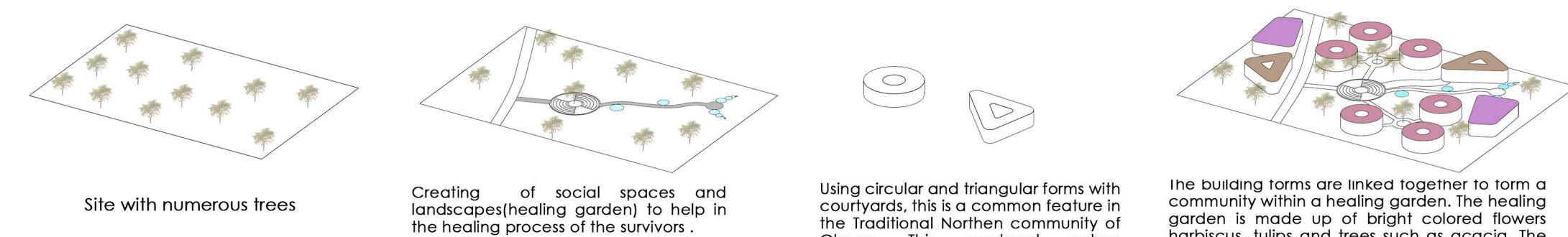


Concept and Form Development

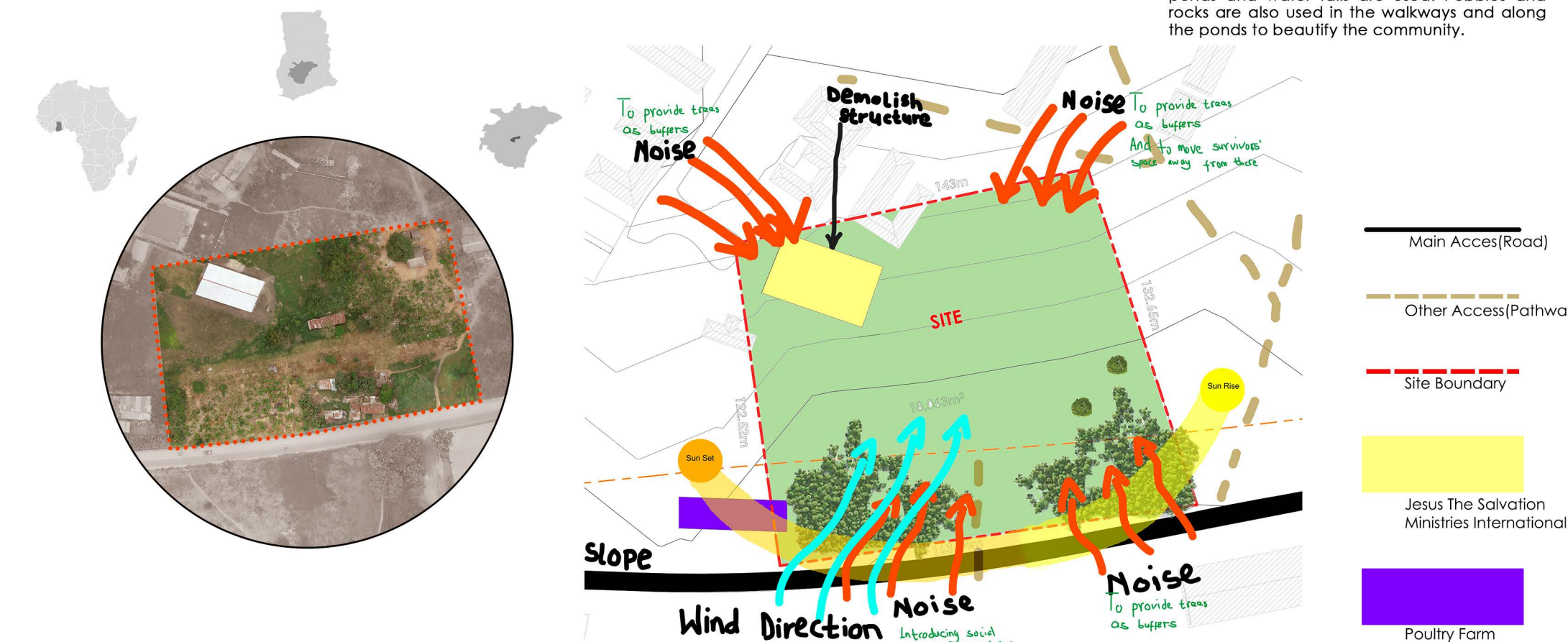
Designing a rehabilitation center for stroke survivors which is a complex and challenging task that requires a deep understanding of the needs of the users and the cultural context in which it is located. The proposed design for the rehabilitation center features a community within a healing garden. The central hub of the community serves as an outdoor space for patients to relax, socialize, and exercise. The landscaping of the rehabilitation center provides opportunities for gardening.

which has been shown to be a therapeutic activity for stroke survivors. The central hub which includes an amphitheatre is surrounded by the main facilities which would be constructed with Compacted Earth Block (CEB) and bamboo as the main roofing members. This design approach would not only promote sustainability but also incorporate local building materials that reflect the culture of Africa. The facilities are designed with the patients' needs in mind, with ample spaces for physiotherapy, speech therapy, occupational therapy, and counseling.

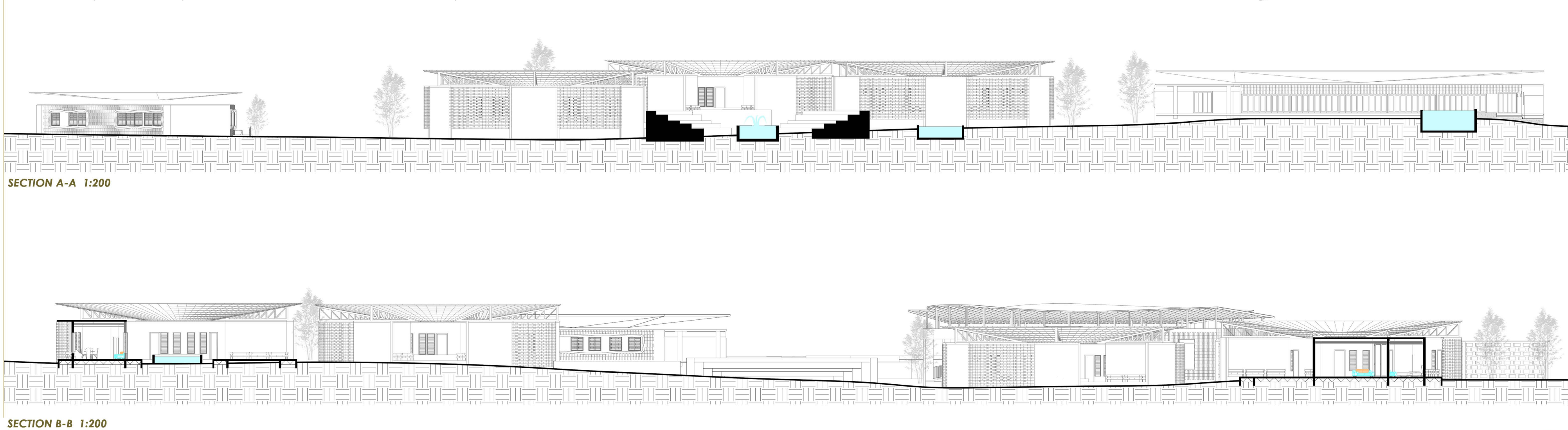
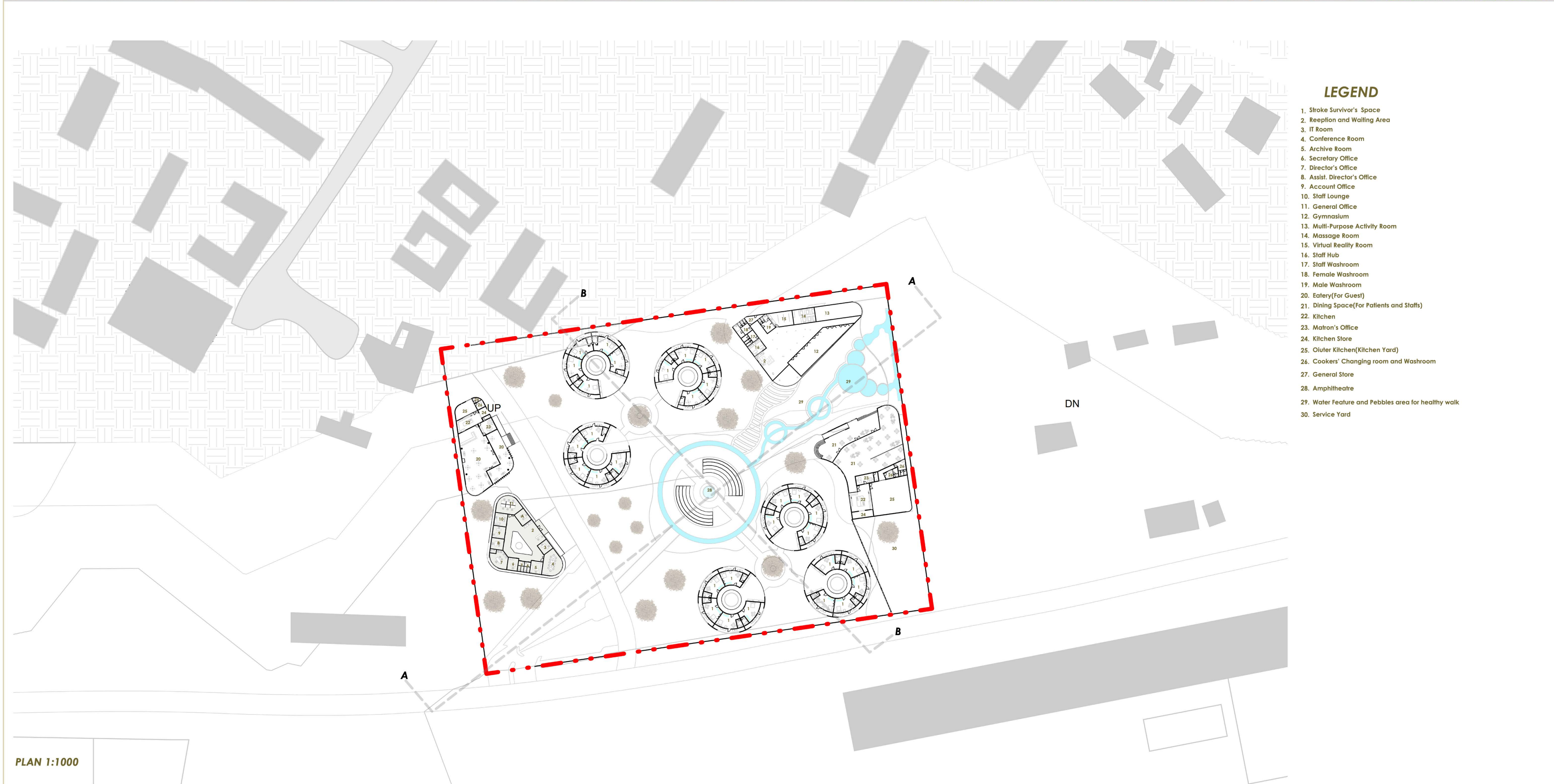
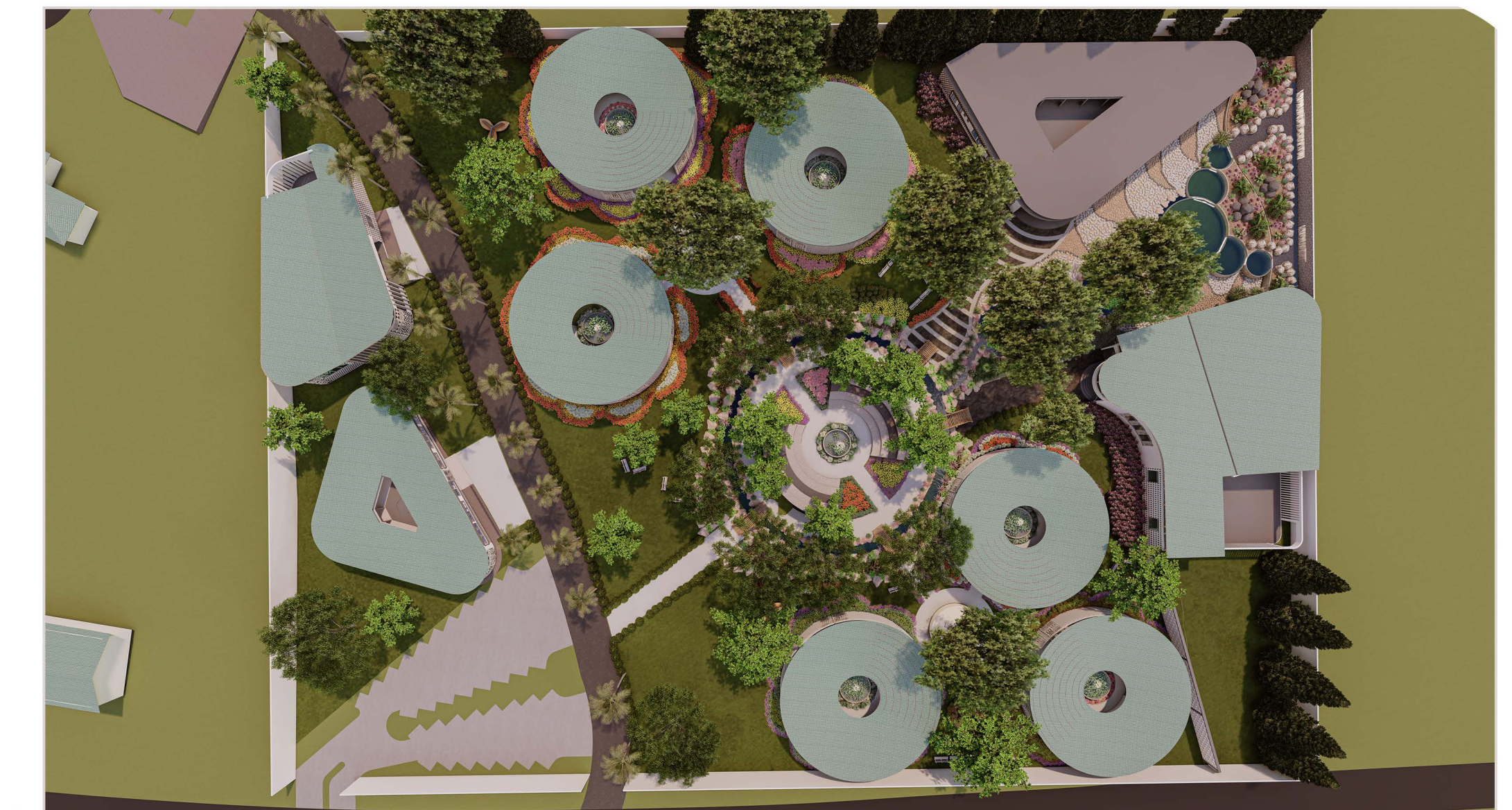
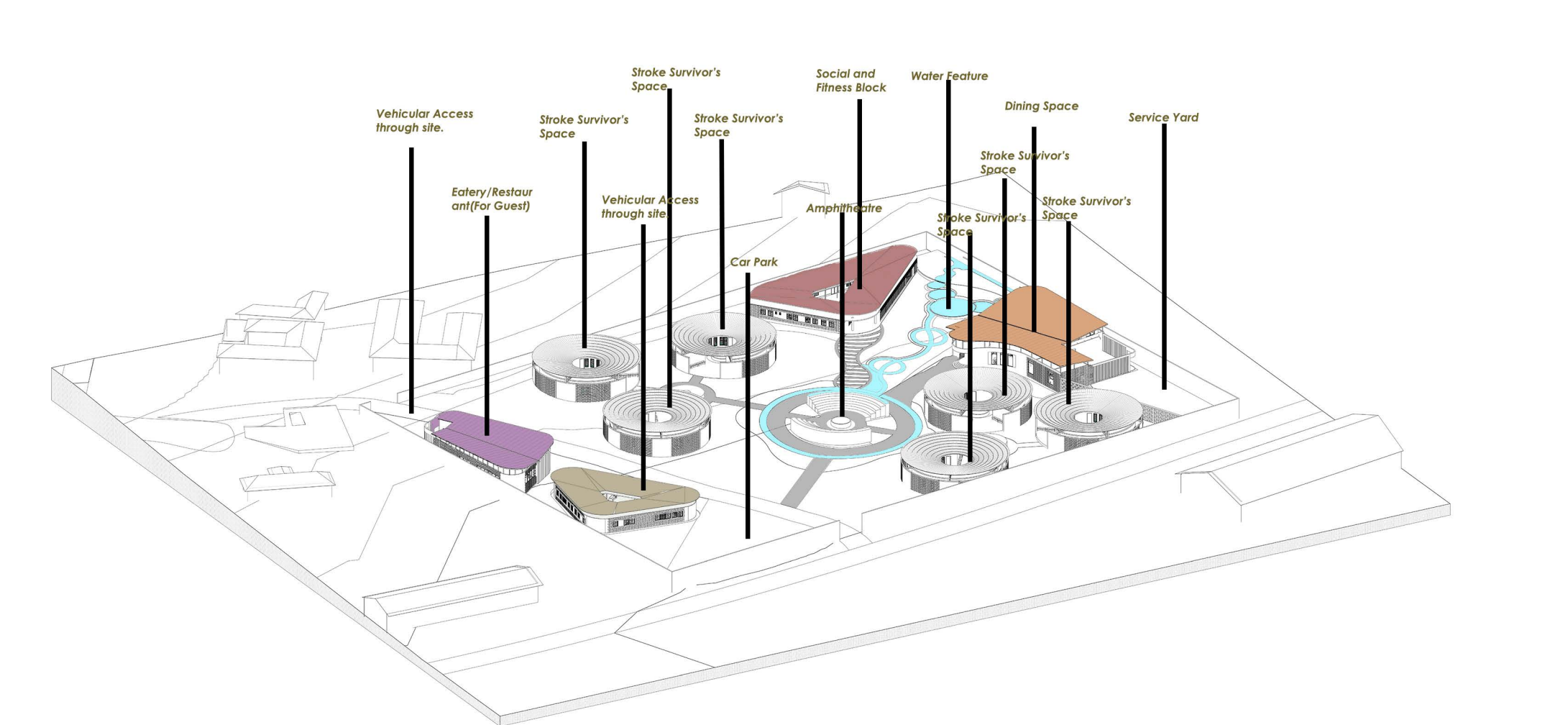
The interior of the facilities are designed with warm and welcoming colors such as brown, which creates a sense of comfort and tranquility for the patients. The use of natural materials such as wood and bamboo also adds warmth to the interior spaces and create a connection between the interior and exterior spaces. The rehabilitation center is designed with sustainability in mind, with water harvesting systems, and composting facilities. The designs also incorporates water harvesting systems that collect rainwater for irrigation and other non-potable uses. The composting system helps in organic waste management, reducing the environmental impact of the facility.



Site Location and Analysis



Activities and Zoning



STROKE SURVIVORS' REHABILITATION CENTER
KUMASI
GHANA

The stroke survivor's space was made in the form of a courtyard with enhances unity and foster the sense of security was used to help the survivors socialize and interact. This makes them gain the courage to the imprve pn themselves and also protect one another.

The roof is elevated with use of wooden truss to create passive cooling and reduce solar ingress. It also help in rainwater harvesting which can be used for non-portable activities like irrigation etc.

