

WROCLAW STROKE REHABILITATION CENTER



REPORT



Location:

The Stroke Rehabilitation Center project was located in Wrocław, on Kasprzowicza Street. The project plot is located near the Odra River, amidst green recreational areas. The neighborhood offers many walking trails along the river, away from the hustle and bustle of the city. In addition, there is a hospital in close proximity.



The idea:

The facility, together with the adjacent grounds, has been designed to provide patients with a healing space for the body and for the mind. A rehabilitation area, therapy area, medical facilities, entertainment and relaxation areas and outdoor recreational and stimulating spaces have been designed.



Terrain:

The site has remained largely green and sown in a meadow. Two autonomous roofed gazebos and a fruit orchard are provided on the plot. The plot area is surrounded by a walking path. Each patient has direct access to the mowed land from their room.



Architecture:

The body of the building is the result of the intersection of three circles. The two larger circles contain the rooms and rehabilitation areas, while the smaller circle connects the common areas for patients. In each of the large circles, its heart is the inner gardens. The building is single-story, which makes it retain a human scale. A large amount of glazing allows nature to seep into the interiors. A characteristic element of the design is wooden muntins, which insulate the facade and also provide shades for the room terraces. The building's common area, contained in the smallest circle, has been highlighted by raising its height. Skylights have been designed into the building to illuminate internal spaces such as the chapel and nursing rooms. The entire building has been designed to accommodate people with mobility disabilities.



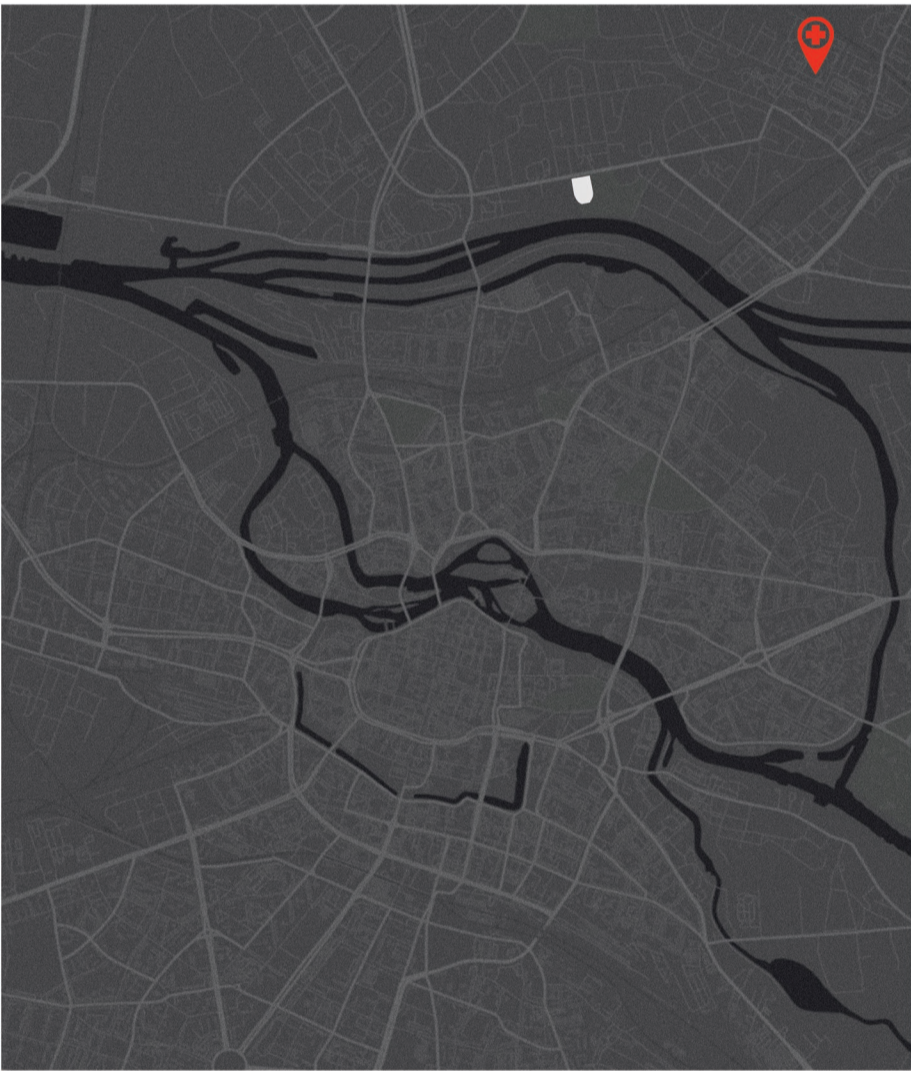
Functional program:

The facility consists of 15 double rooms, a therapeutic area, a recreational area and technical facilities. The building includes a dining room, where patients can eat meals together. There is a common living room where patients can spend time, or meet with their families. The central part of the smallest circle contains a chapel, which was designed as a universal place, not subordinated to any particular religion. The entrance area includes a reception area and lounge area. The facility also includes medical and nursing offices. A storage area with a separate medicine stock room and technical and utility rooms have also been designed.



Stroke Survivor's Space description:

Each room has its own bathroom, a separate kitchenette and a private terrace. Each patient has the option of separating his or her part with mechanically controlled curtains. This solution provides privacy, but also leaves the possibility of contact with another person. The bathroom has been adapted to the needs of people with mobility difficulties. Helpful handles have been placed, as well as a folding chair in the shower. Each patient has access to built-in furniture, which consists of a sliding-open cabinet, shelves for books and personal belongings, and a built-in seat. The upper lockable shelves can be used as storage for fresh linens.



Location



Situation

Chosen analysis:

Analysis of function



- Designed plot
- Single-family housing
- Multi-family housing
- Religious function
- Commercial function
- Allotments
- Garage, outbuildings
- Sport & leisure function

Analysis of communication

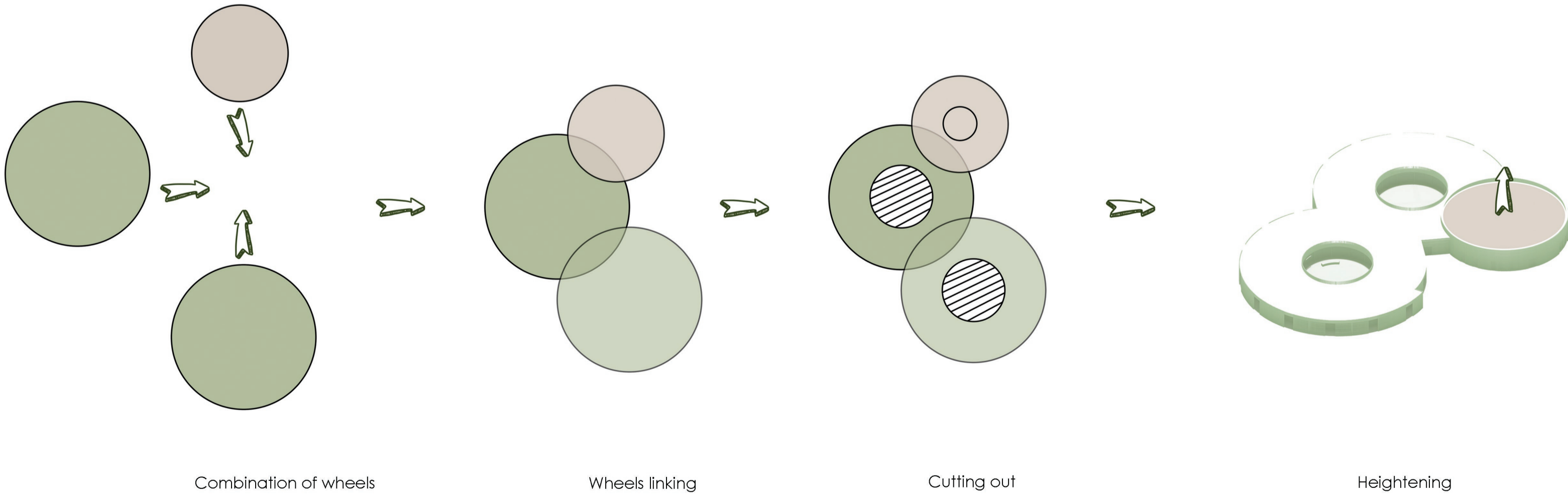


- Designed plot
- Roads
- Pedestrian & bicycle traffic, paved pathways
- Pedestrian & bicycle traffic, unpaved pathways
- Public transportation stop
- paved road with limited access for cars

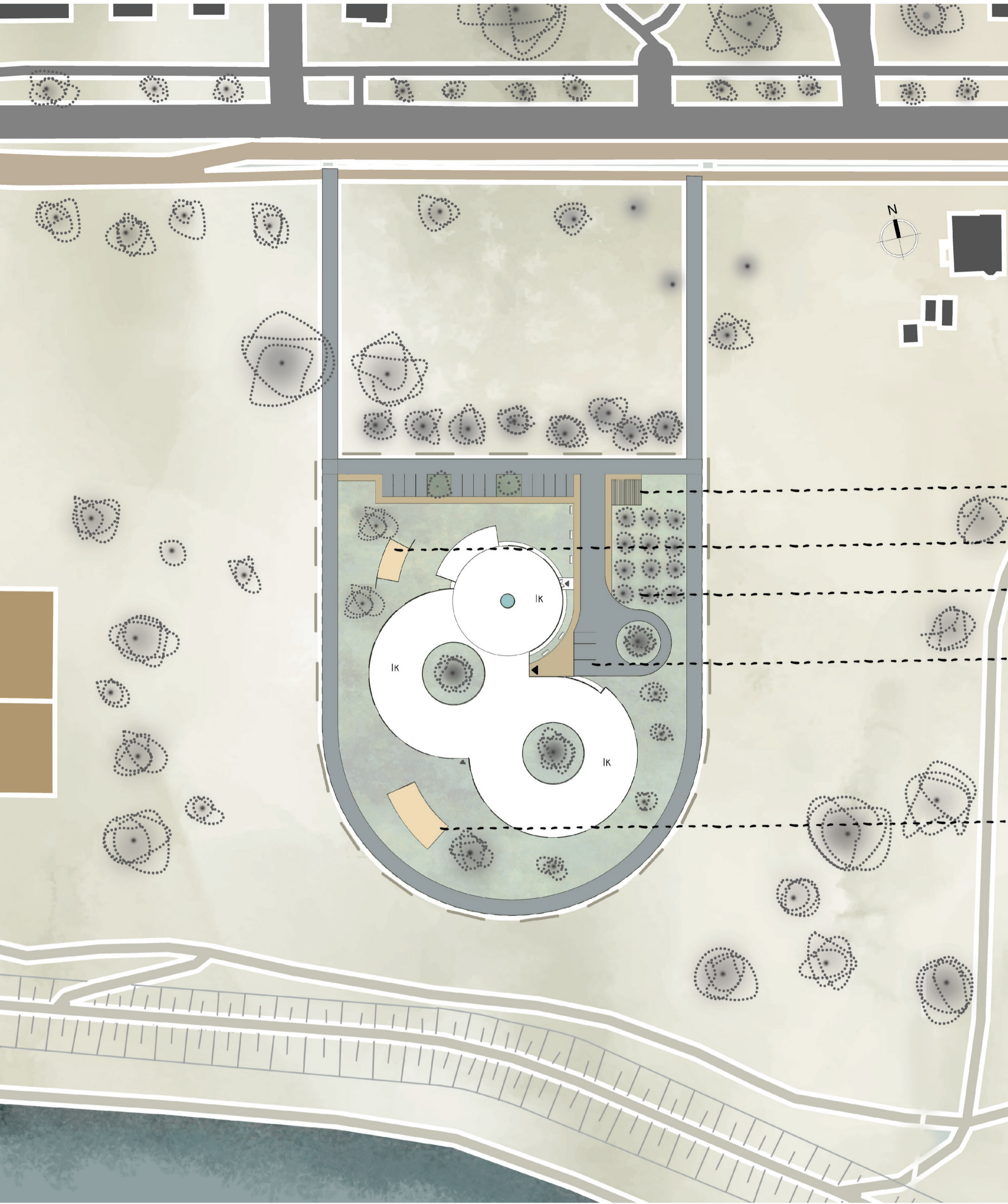
Analysis of greenery



- Designed plot
- Allotments
- Short greenery
- Parks
- Existing trees



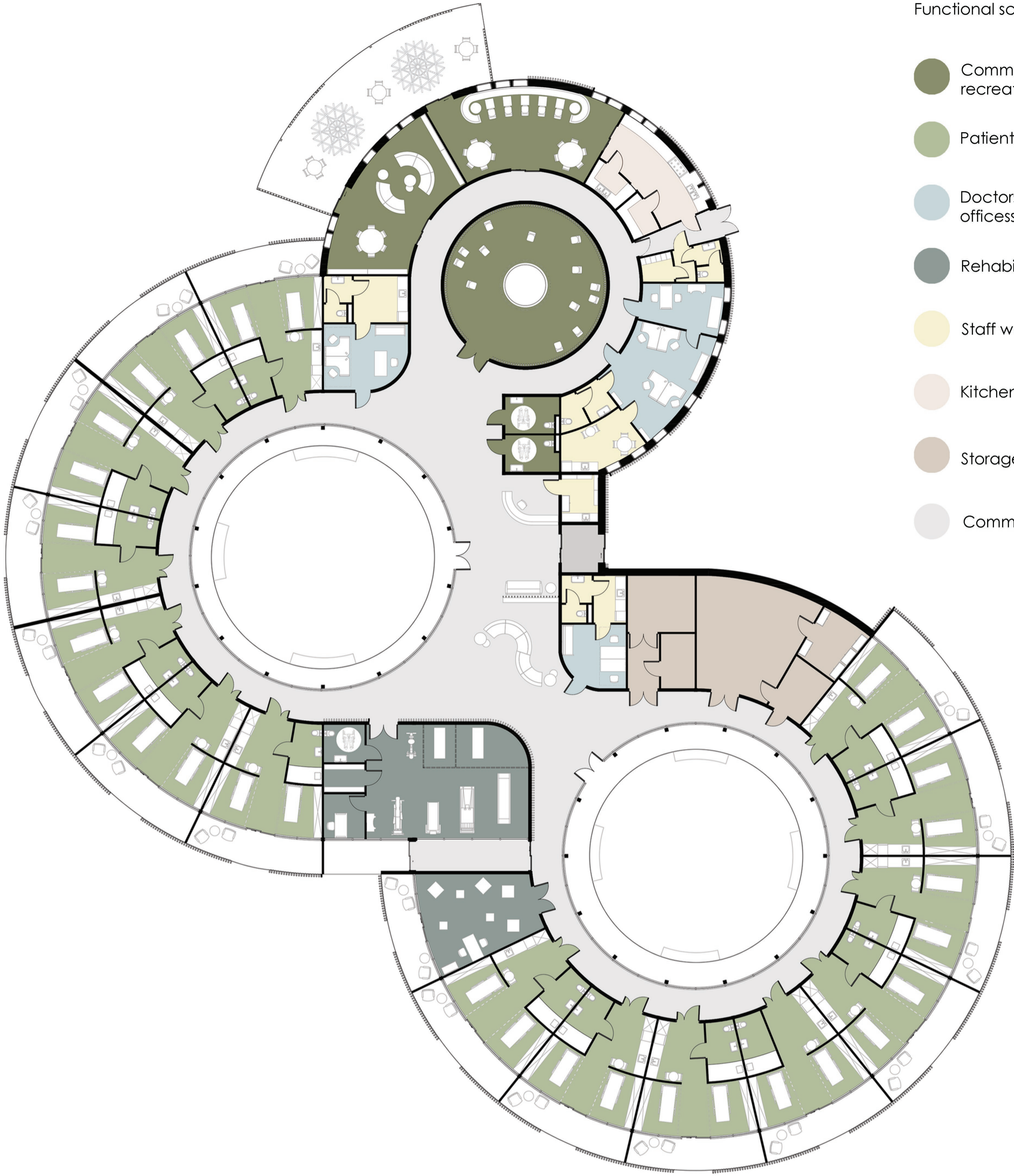
WROCLAW STROKE REHABILITATION CENTER



Site plan 1:750

- ▲ Main entrance
- ▲ Additional entrance
- - - Development boundary
- 1k Number of floors
- 🌳 Designed tree

- Waste disposal site
- Gazebo (stimulation & leisure)
- Fruit orchard
- Parking spots for disabled
- Gazebo (jacuzzi)



Functional scheme

- Common spaces, recreation
- Patients' rooms
- Doctors' and nurses' offices
- Rehabilitation zone
- Staff welfare facilities
- Kitchen
- Storage and technical rooms
- Communication

East elevation
1:100



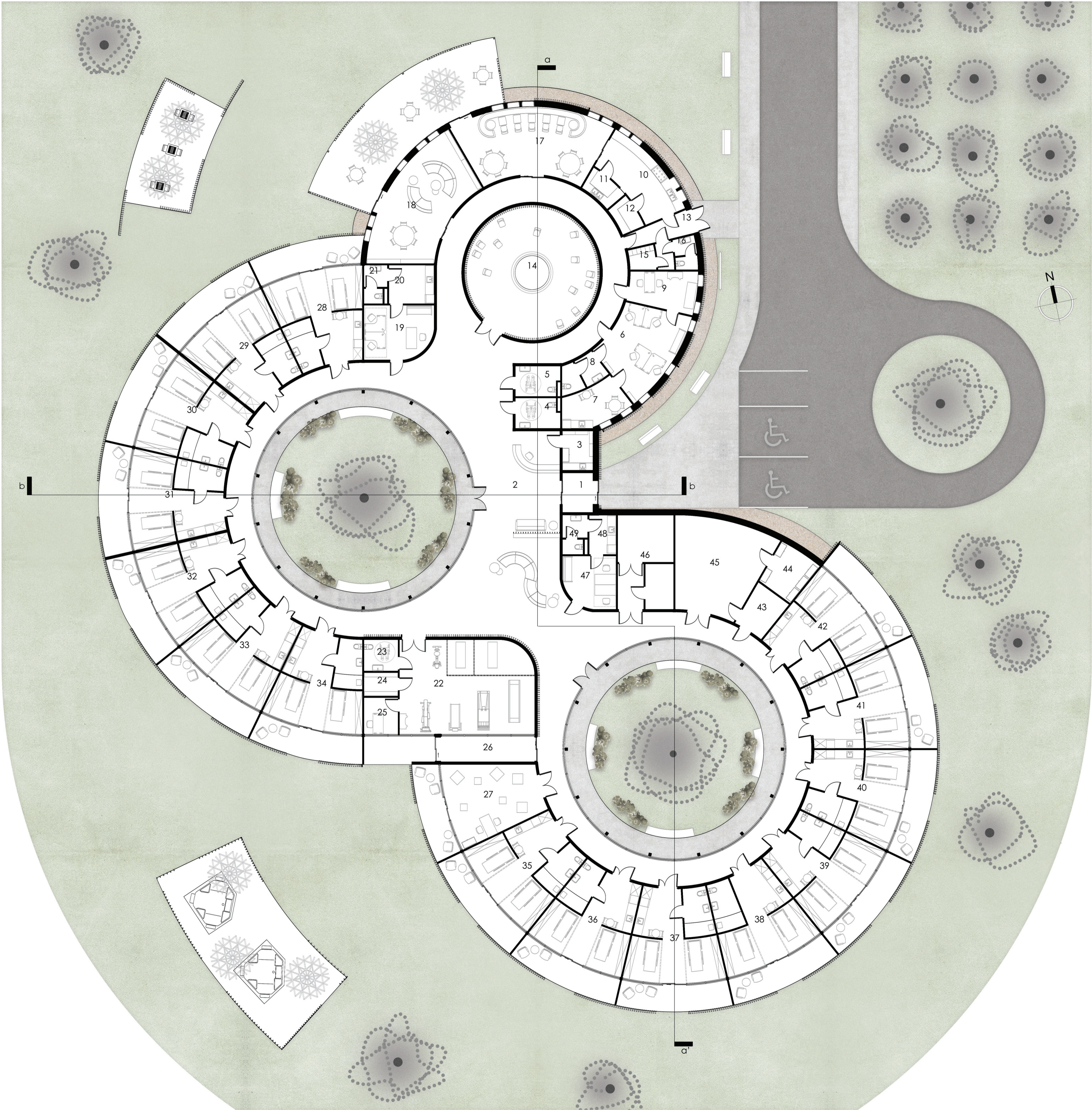
South elevation
1:100



WROCLAW STROKE REHABILITATION CENTRE

Floor plan 1:150

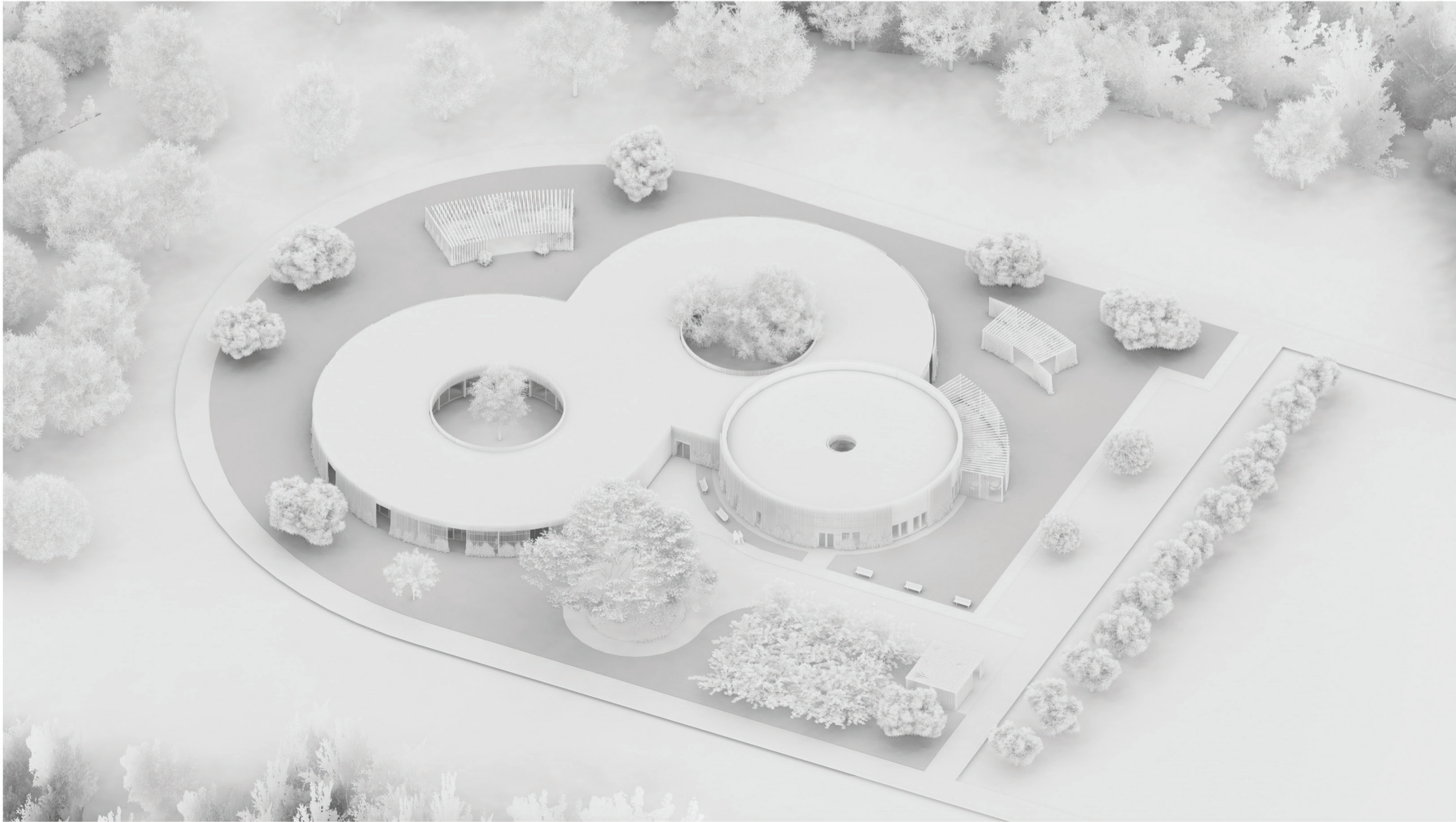
Gazebos view



1	entrance	6 m2	13	delivery	7 m2	25	doctor's office	7 m2	37	room	40 m2
2	gallery	422 m2	14	chapel	75 m2	26	exit	13 m2	38	room	40 m2
3	staff facilities	7 m2	15	staff facilities	5 m2	27	therapy	34 m2	39	room	40 m2
4	toilet	7 m2	16	staff toilet	4 m2	28	room	40 m2	40	room	40 m2
5	toilet	7 m2	17	dining room	48 m2	29	room	40 m2	41	room	40 m2
6	office	29 m2	18	living room	45 m2	30	room	40 m2	42	room	40 m2
7	social room	12 m2	19	nursing facilities	19 m2	31	room	40 m2	43	utility	10 m2
8	staff toilet	6 m2	20	social room	9 m2	32	room	40 m2	44	drug warehouse	8 m2
9	doctor's office	13 m2	21	staff toilet	4 m2	33	room	40 m2	45	storage	43 m2
10	kitchen	21 m2	22	physiotherapy	66 m2	34	room	40 m2	46	technical	27 m2
11	sink	4 m2	23	toilet	6 m2	35	room	40 m2	47	nursing facilities	14 m2
12	storage	4 m2	24	storage	4 m2	36	room	40 m2	48	social room	5 m2
									49	staff toilet	5 m2
									total		1594 m2

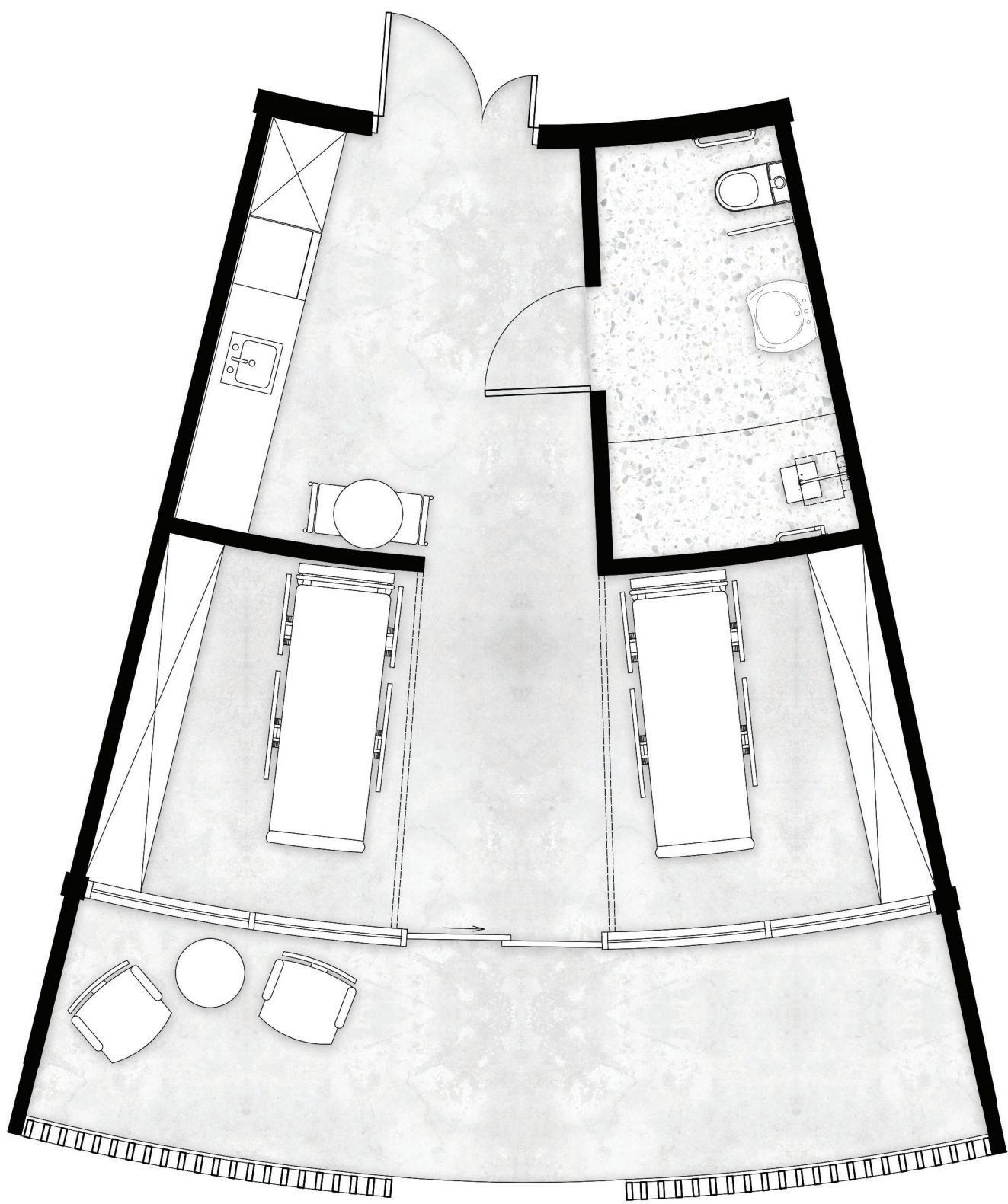


Chapel view



Axonometric view

WROCLAW STROKE REHABILITATION CENTER



Stroke Survivor's Space 1:50



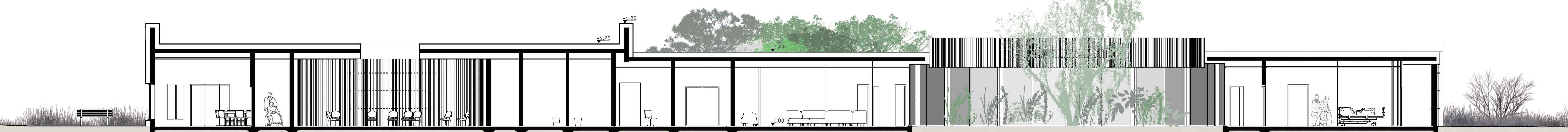
Walls layouts 1:50



Scheme of furniture installation 1:50



Section b-b'



Section a-a'