



THE SITE

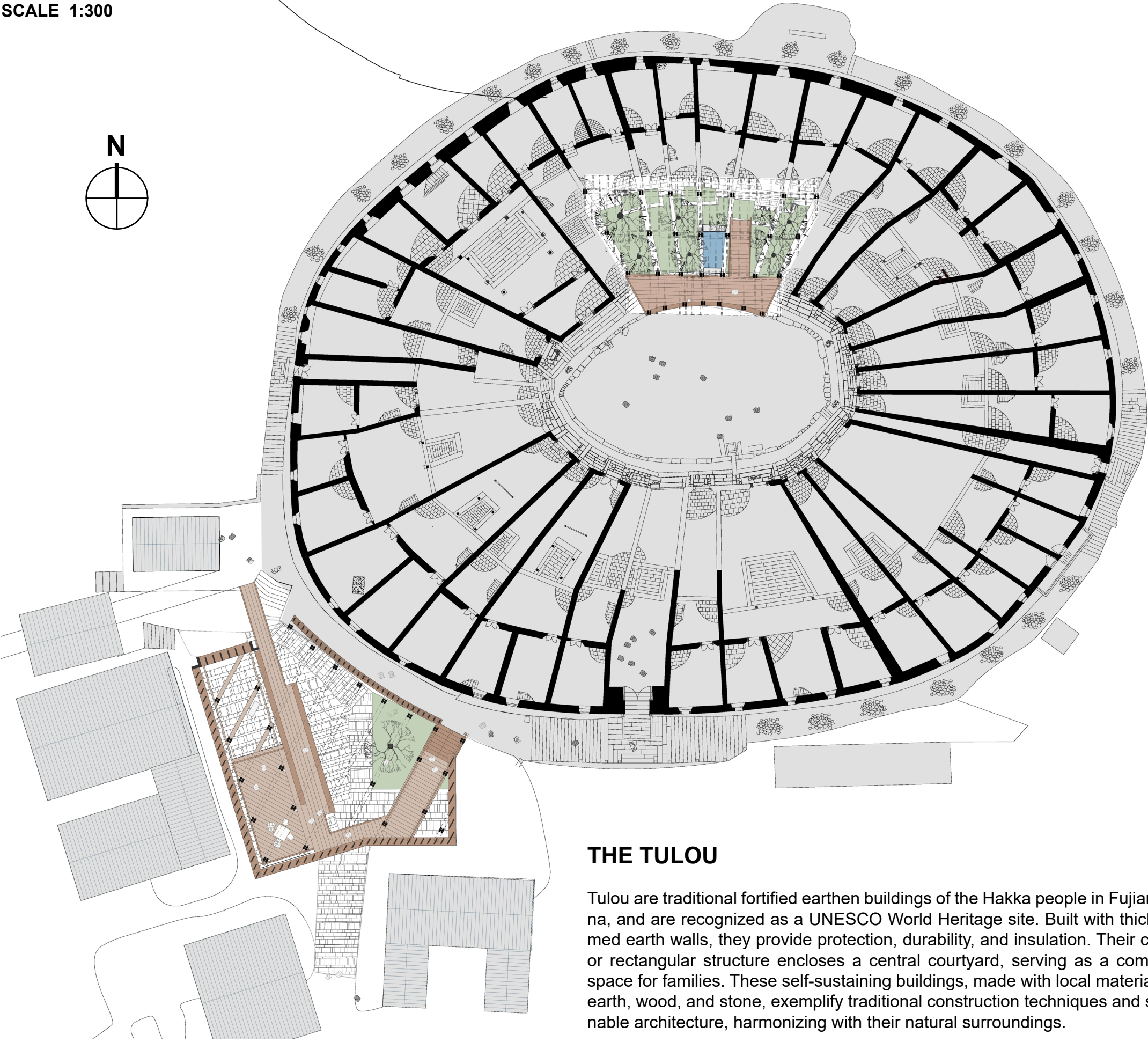
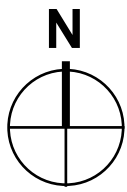
The Fujian region is characterized by a long series of Tulou, a centuries-old structure known as "Mother Earth", which define its unique scenery. Situated on top a prominent hill, it links urban and rural landscapes, serving as a focal point for appreciating the surrounding environment. Two interventions are planned, one inside the Tulou and one outside, both designed with consideration for the Tulou's essence and his consolidation.

THE PROJECT

Mother Earth Tulou, a UNESCO-protected monument, undergoes meticulous restoration, reflecting its enduring history through its external facade. The project actively engages the local community, providing new opportunities for cultural exchange, economic growth, and social interaction. By integrating spaces that support communal activities, it elevates the role of the Tulou as a living heritage site. The inner intervention features a tulou-inspired courtyard with a stage/balcony, creating an enclosed space with a radial design reminiscent of classical architecture. The second intervention involves two adjacent collective dwellings, built below Tulou's foundation, providing a gathering centre for the community and visitors, highlighting local tea production and Tulou history. The project proposes replacing the upper level of the original houses with a new timber structure, creating space for a tea house and bookshop, and enhancing connectivity with the village view. A key focus of the renovation is ensuring that tourism benefits rather than disrupts the local environment and community. Measures are implemented to balance conservation and economic development, promoting responsible tourism practices. Educational initiatives will raise awareness about the significance of the Tulou, while improvements in accessibility and sustainability ensure that the site remains preserved for future generations.

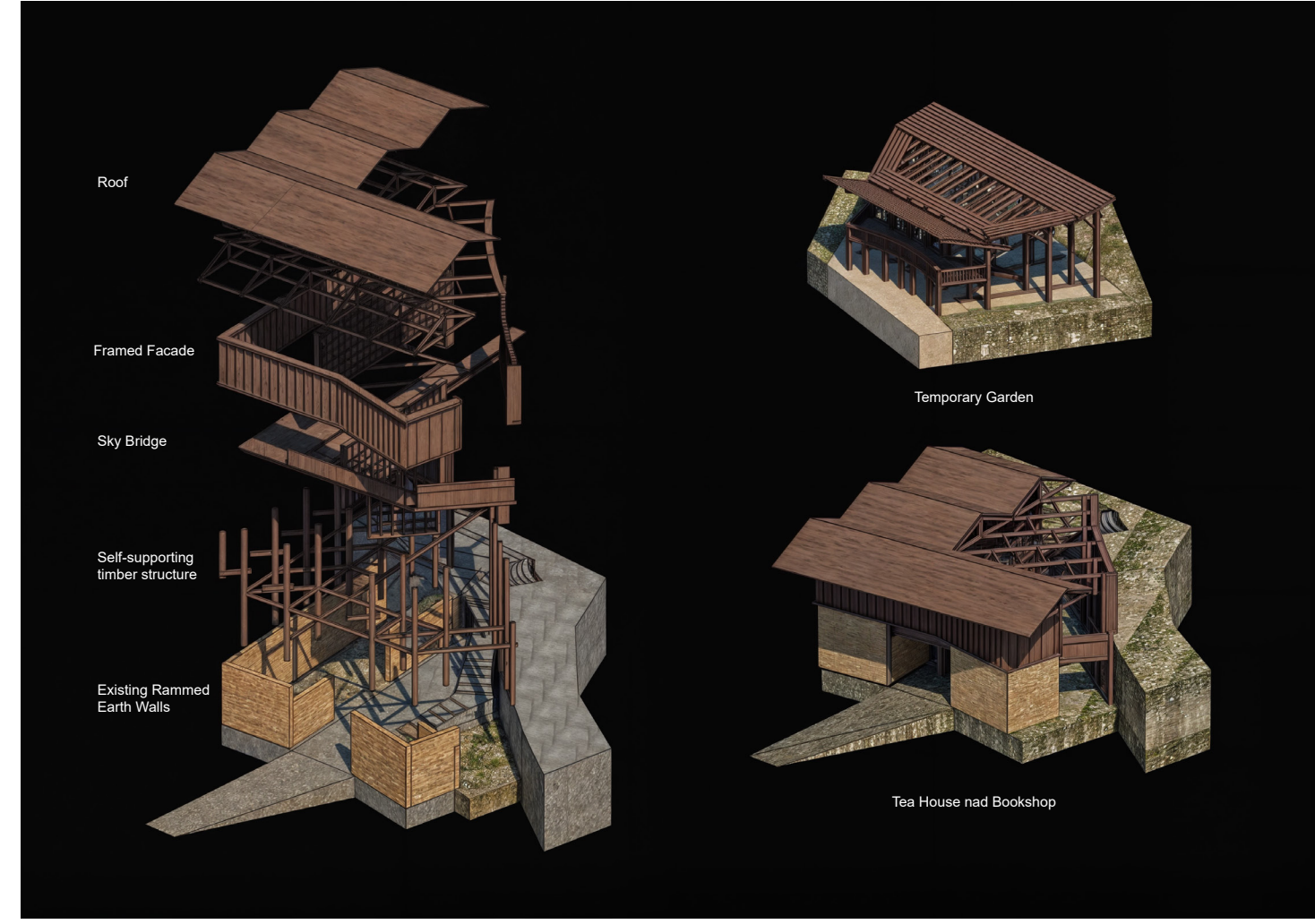
Inside, the radial structure strengthens the connection with the Tulou, while a sky-bridge on Level One offers panoramic views towards Pushand village. The renovation project creates a new public space for locals and visitors to appreciate the village's rich heritage while synergizing with the surrounding nature and context.

SCALE 1:300



THE TULOU

Tulou are traditional fortified earthen buildings of the Hakka people in Fujian, China, and are recognized as a UNESCO World Heritage site. Built with thick rammed earth walls, they provide protection, durability, and insulation. Their circular or rectangular structure encloses a central courtyard, serving as a communal space for families. These self-sustaining buildings, made with local materials like earth, wood, and stone, exemplify traditional construction techniques and sustainable architecture, harmonizing with their natural surroundings.



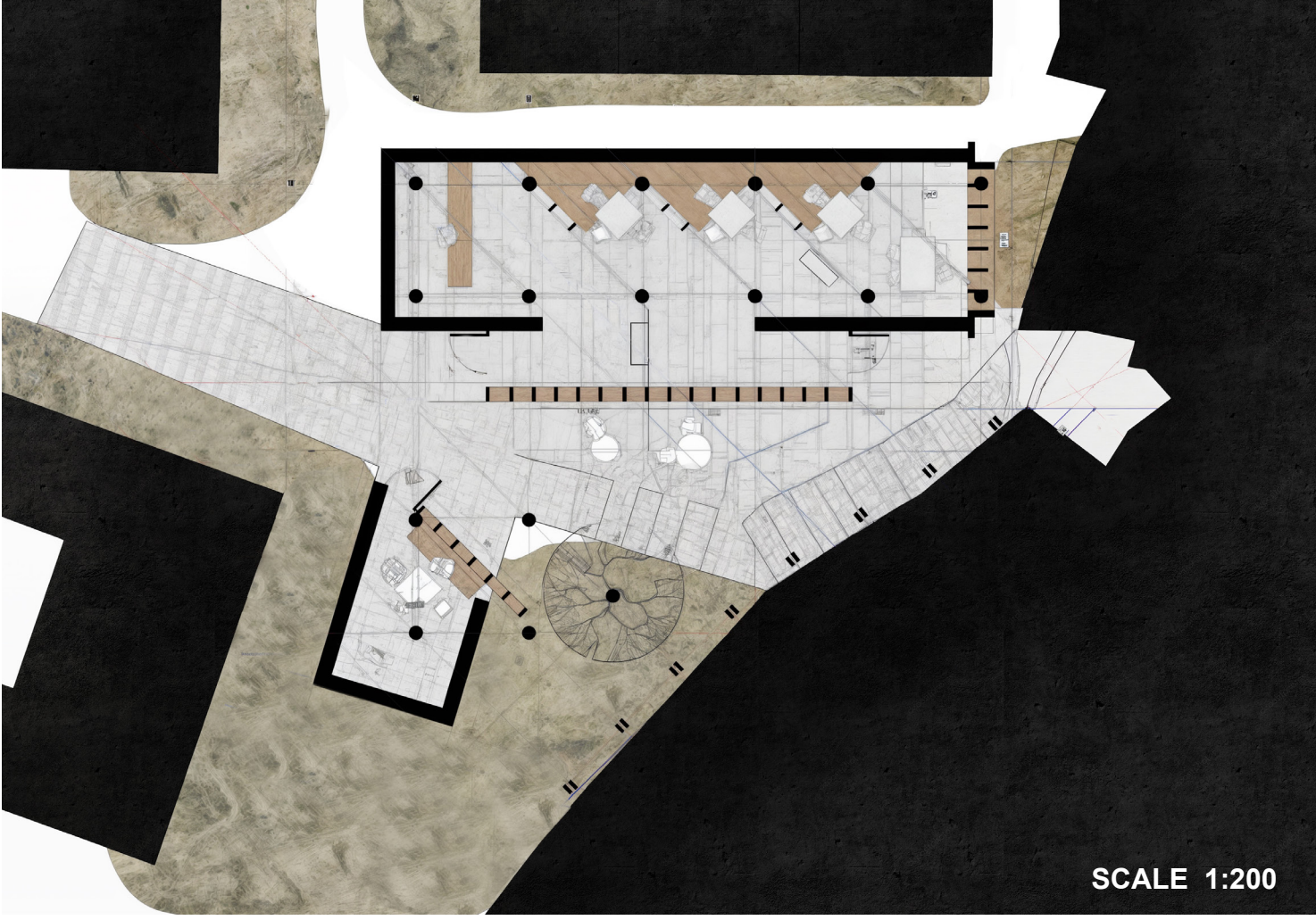
TEA HOUSE AND BOOKSHOP

This building is a reuse of two previous structures, combining them to create a generous public space serving both the city and the site. It functions as a tea house and a book-shop, providing a place to relax and read documents and publications, both in physical and digital formats, related to the history and construction of Tulou. A place to admire the stone that characterizes the construction of the Tulou on the lower floor, but, above all, a vantage point from which to appreciate the entire village.

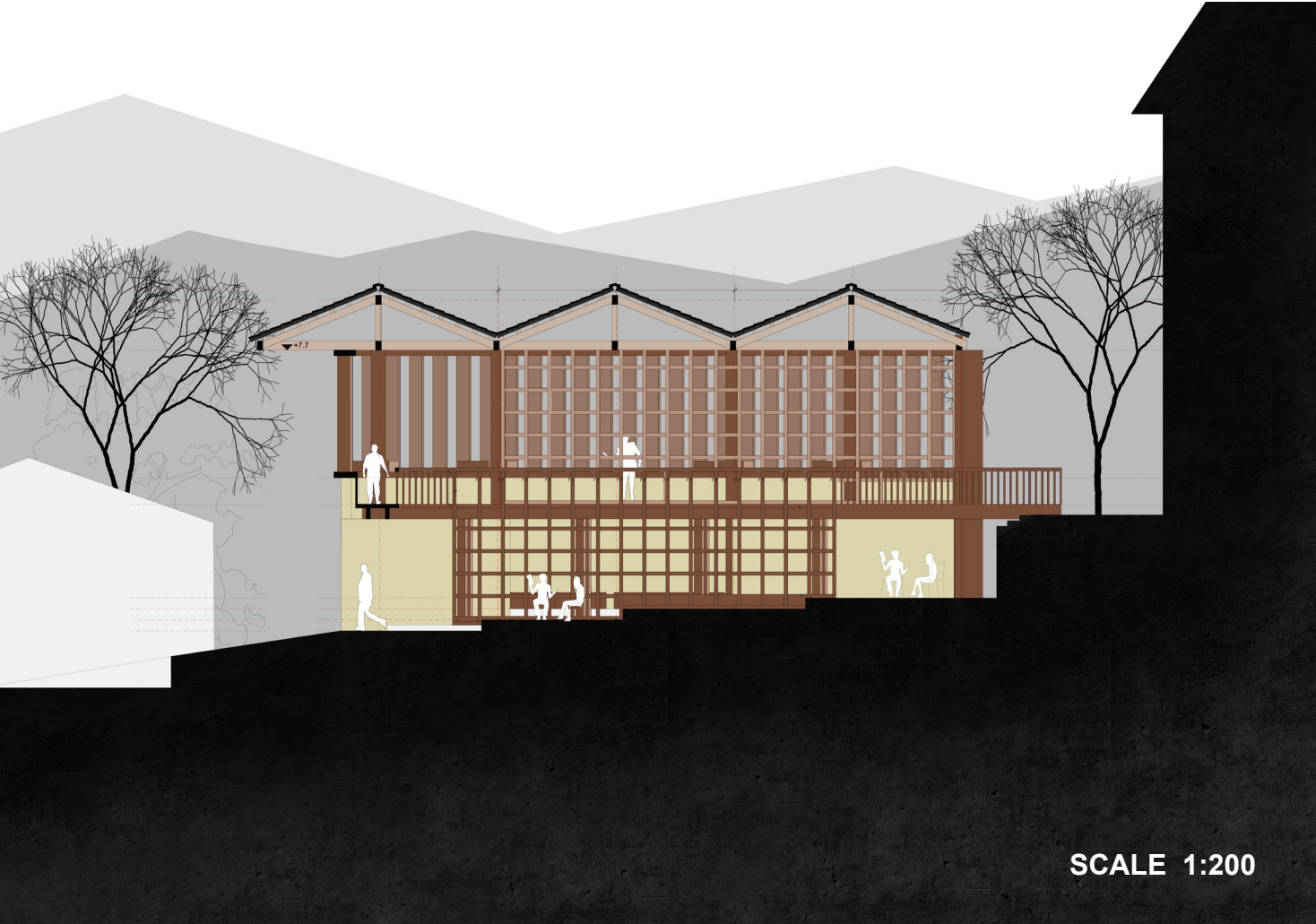
TEMPORARY GARDEN

This intervention features a courtyard inspired by the typical Hakka typology.

The garden is delineated by a stage/balcony that can serve as a platform for performances or as seating for the audience. The inner courtyard constitutes an enclosed garden adorned with water features and trees. This infrastructure can be used for spectacles and local festivities, serving both as a stage and as a seating area for the audience.



SCALE 1:200



SCALE 1:200

