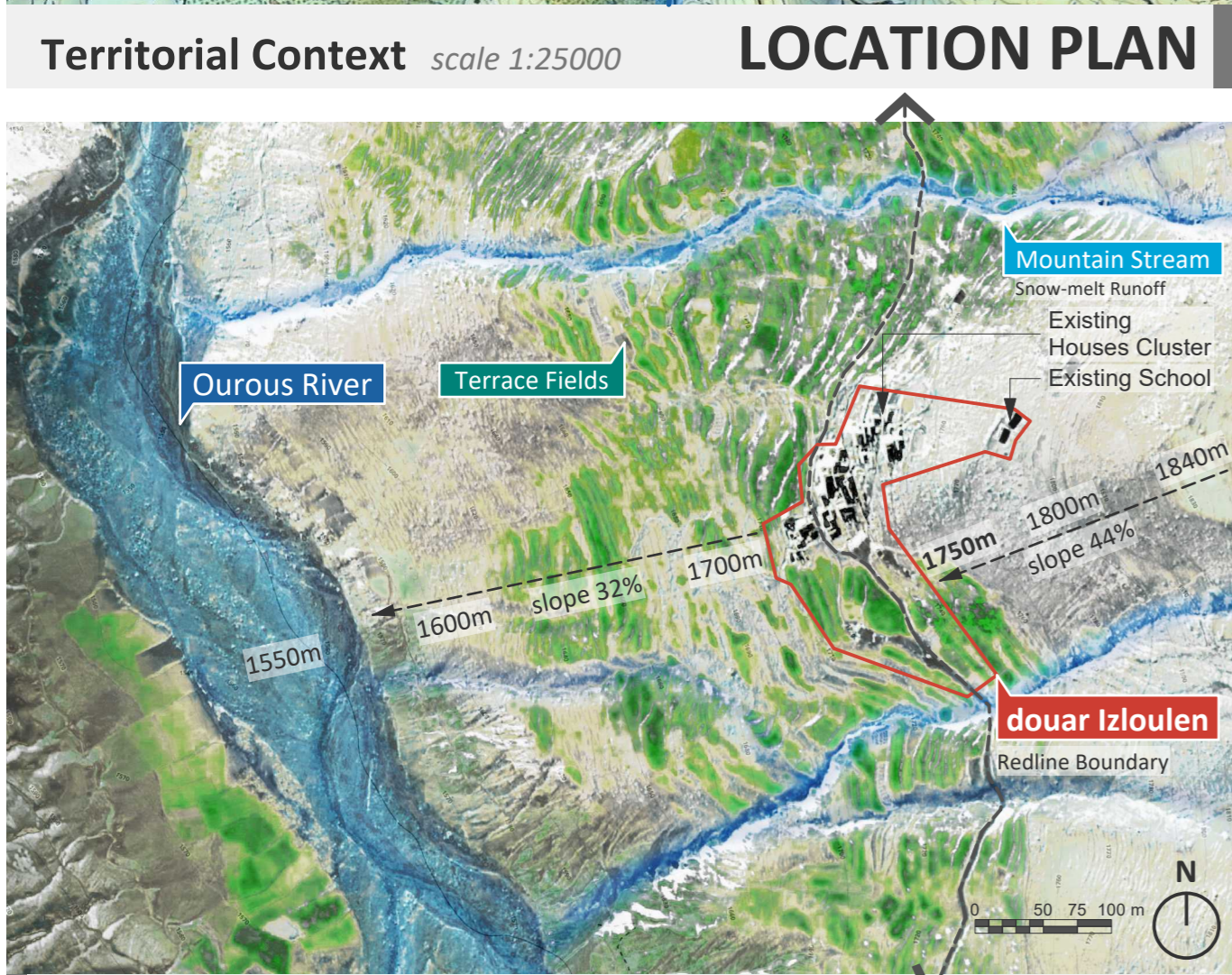
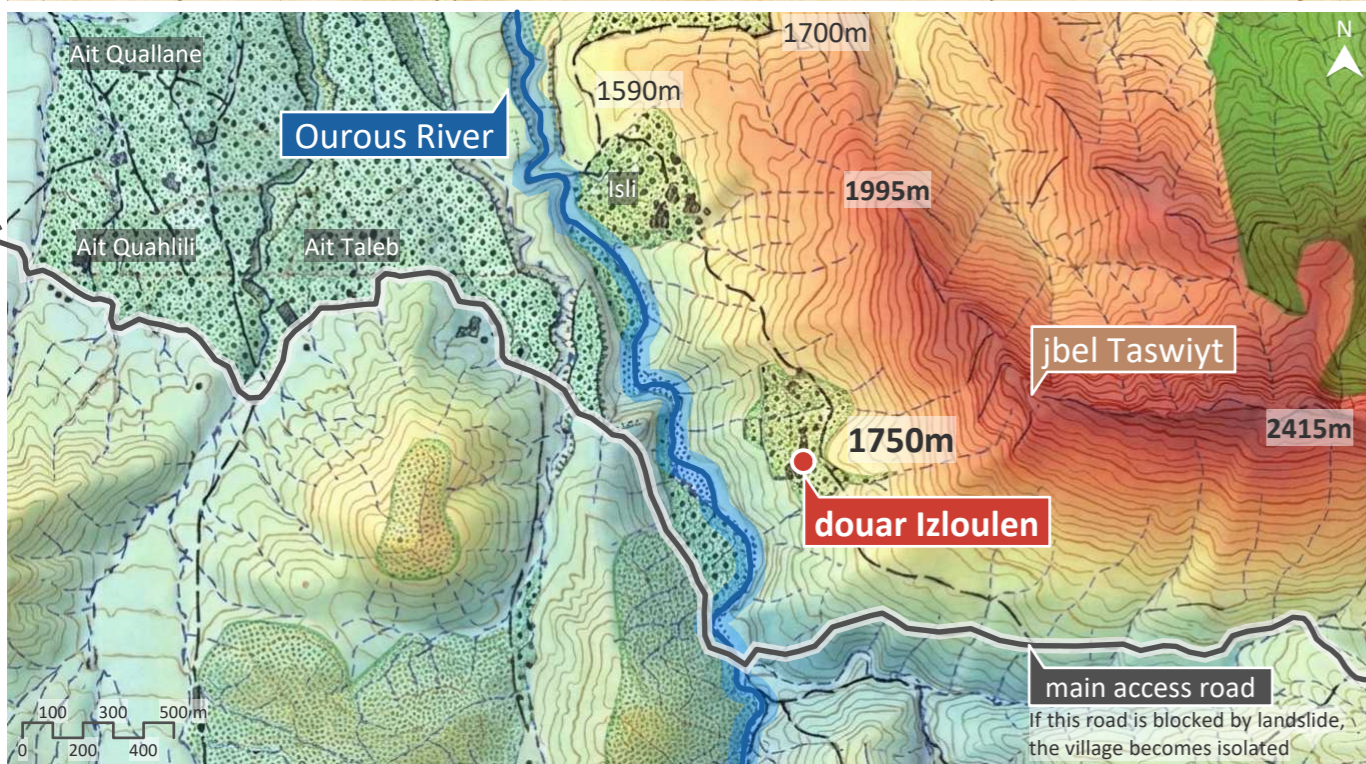


MAGIC WEAVING

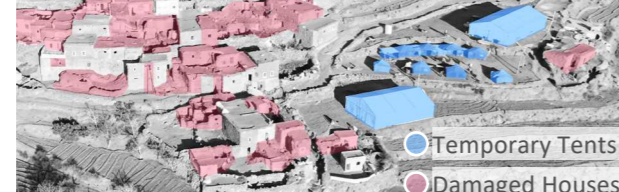
Tiwizi-based Approach to Post-Earthquake
'Build Back Better' for Douar Izoulouen, Azilal, Morocco



SITE & CONTEXT ANALYSIS

Current Situation
Nearly 3 years after the 2023 earthquake, many Amazigh families in Douar Izoulouen continue to live in temporary tents, exposed to extreme weather. Their houses remain partially damaged: walls are cracked, roofs are unstable, and structures show no clear sign of safety. People are afraid to return home, fearing a sudden collapse. This uncertainty has created deep psychological trauma as prolonged displacement leads to a loss of dignity, privacy, and normal life.

Challenges
This reality raises urgent questions:
- How can we build back not just better, but quickly, using materials already available on site?
- How can we make damaged houses structurally safe again without demolishing them?
- How can reconstruction preserve memory, identity?
- How can local labor and traditional skills become the main driver of rebuilding?



APPROACH

Attitude
The proposal begins with a clear attitude: **REPAIR, not replace. RETROFIT, not demolish. REINFORCE, not abandon.** Build back better on the same land, at the same home, where memory and identity belong. Instead of relocating houses, reconstruction happens in place. Existing structures become the foundation and basis for recovery.

Concept
The core concept is **MAGIC WEAVING**, inspired by Amazigh handicraft traditions. Just as a rug is made by thread, each intervention acts as a **MAGIC THREAD**, carefully added, reinforcing structures, restoring land, reconnecting systems, and firmly strengthen the whole village. Reconstruction becomes a process of **WEAVING BACK LIFE**.

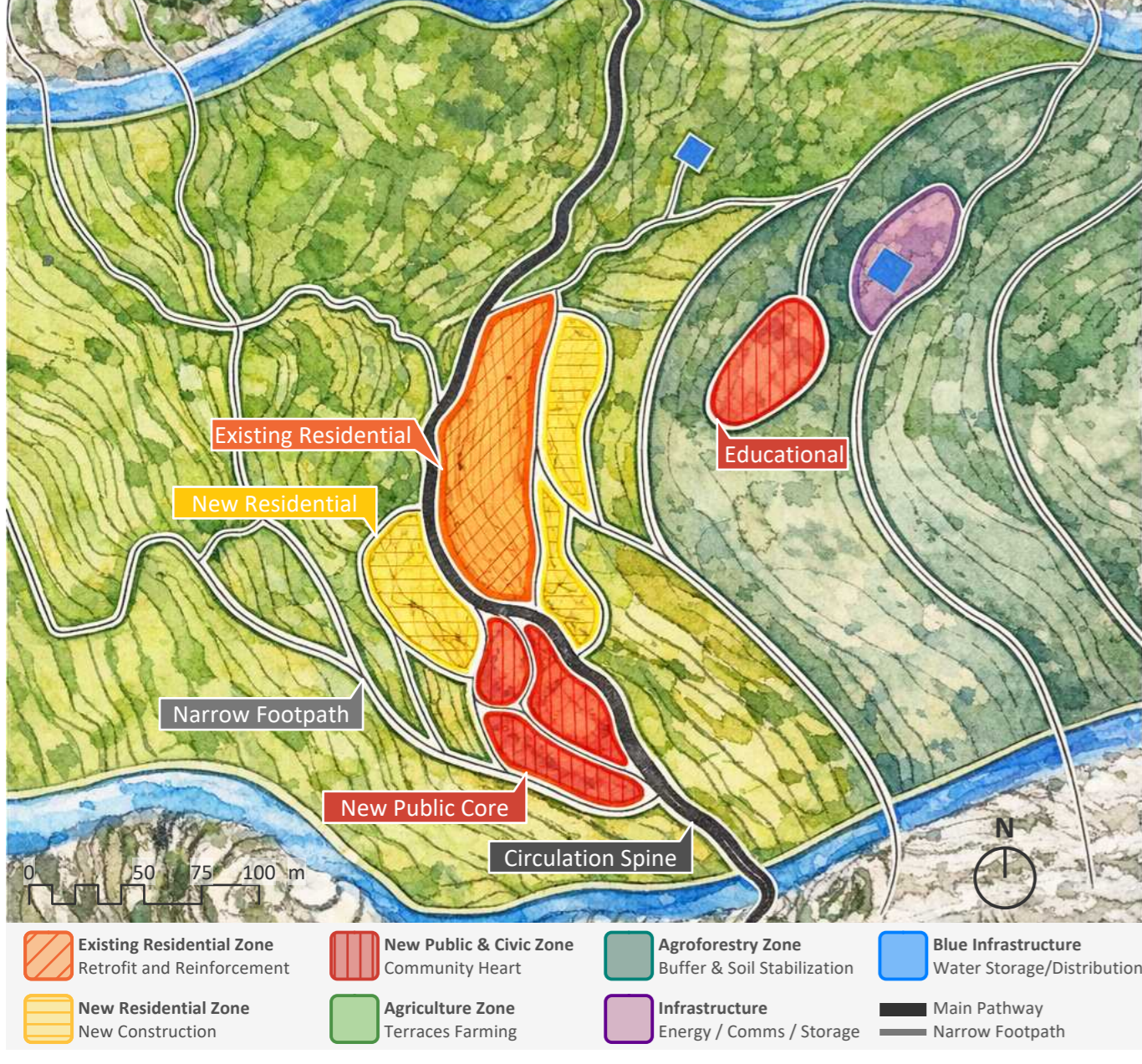
Design Strategies

- **At house scale (Short term):** Focus on strengthening existing houses using ductile systems made from local materials. Immediate retrofit stabilizes damaged structures and allows families to safely return home.
- **At village scale (Mid term):** Establish a new public core, including mosque, school, health post, and market. These spaces restore social life, provide essential services, and strengthen community.
- **At territorial scale (Long term):** Connect isolated villages into a larger network of resilient settlements across the High Atlas.



Each rebuilt village becomes a beacon, a model for others. Together, they form a larger Magic Weaving across the High Atlas Mountain region. Connected villages create a resilient and prosperous network, securing the future of Amazigh communities for generations to come.

ZONING STRATEGY

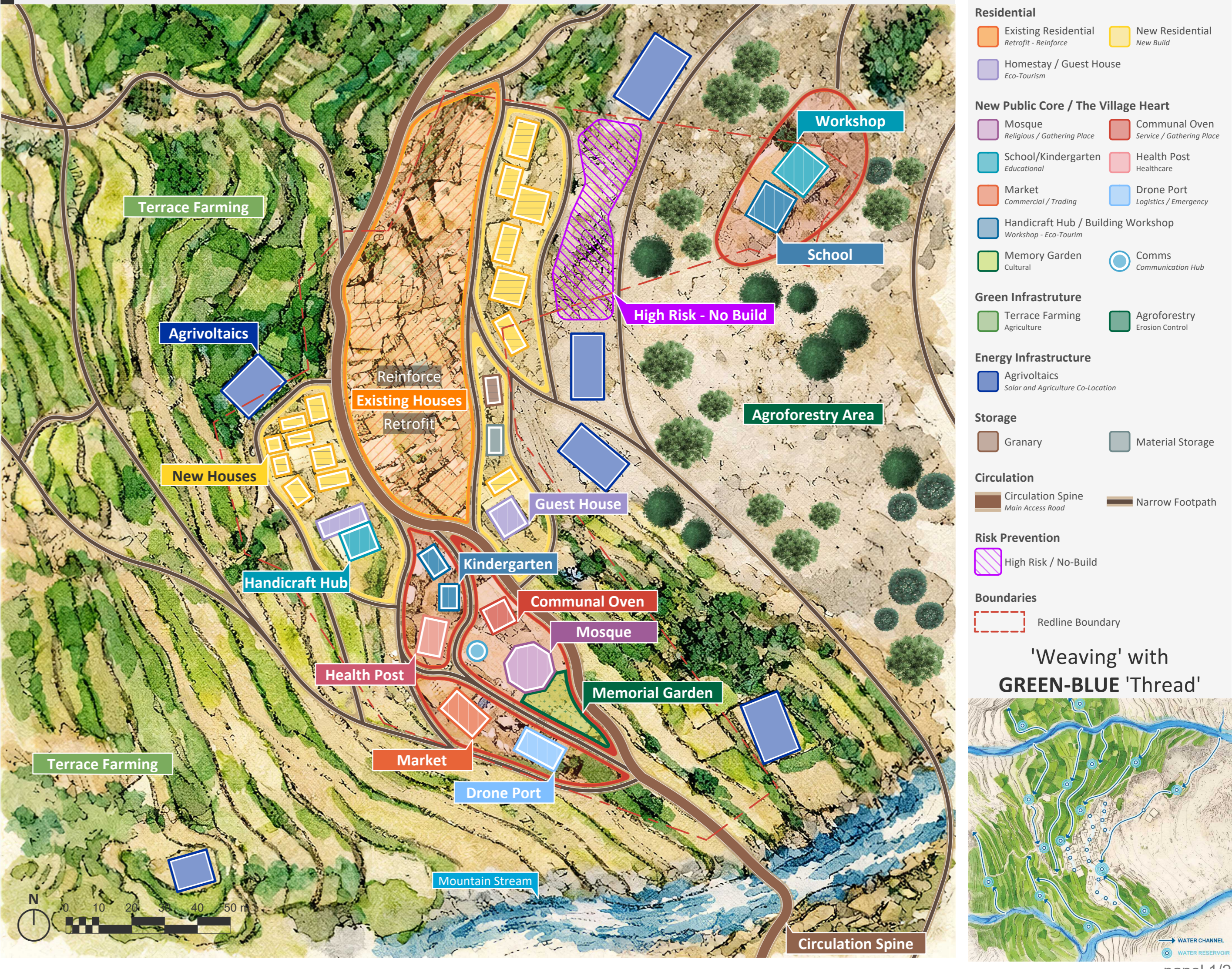


CORE STRATEGY

	Brittle Vernacular	Structural Damage	Rural Exodus
CURRENT STATE	 Vernacular houses built with stone and rammed earth (pisé) are thermally excellent. But these heavy and brittle materials cannot bend. The overall structure are vulnerable to lateral forces during earthquake.	 Houses are not fully collapsed but not safe. This 'in-between' state is often worse than clear destruction.	 Facing uncertainty, younger generations are beginning to ask: "Is there a future here?". For many, urban migration is no longer just an aspiration, it is an economic necessity.

	'Weaving' with DUCTILE 'Thread'	'Weaving' with SAFETY 'Thread'	'Weaving' with PROSPEROUS 'Thread'
PROPOSED STATE	 Retrofit and reinforce damaged pisé / stone walls without demolition.	 Add flexibility and tensile strength to existing structure by using reinforced ductile system: Timber frame + Interwoven Reeds/Sticks + Infill	 Establish new public core with mosque, school, health post, market and communal ovens. Introduce drone port for emergency delivery and support.

LAND USE STRATEGY

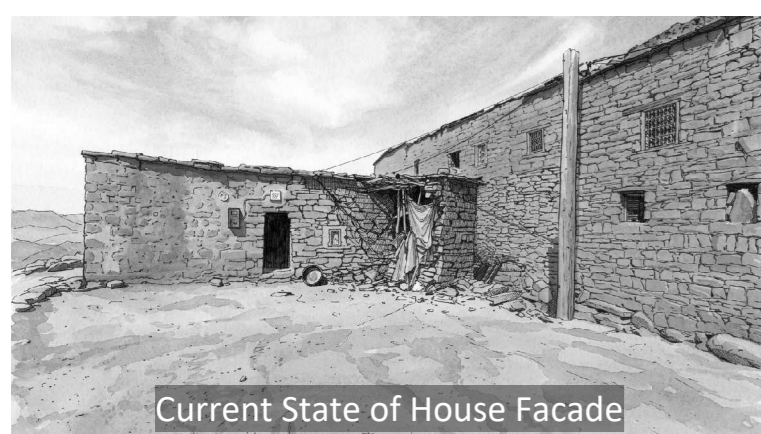
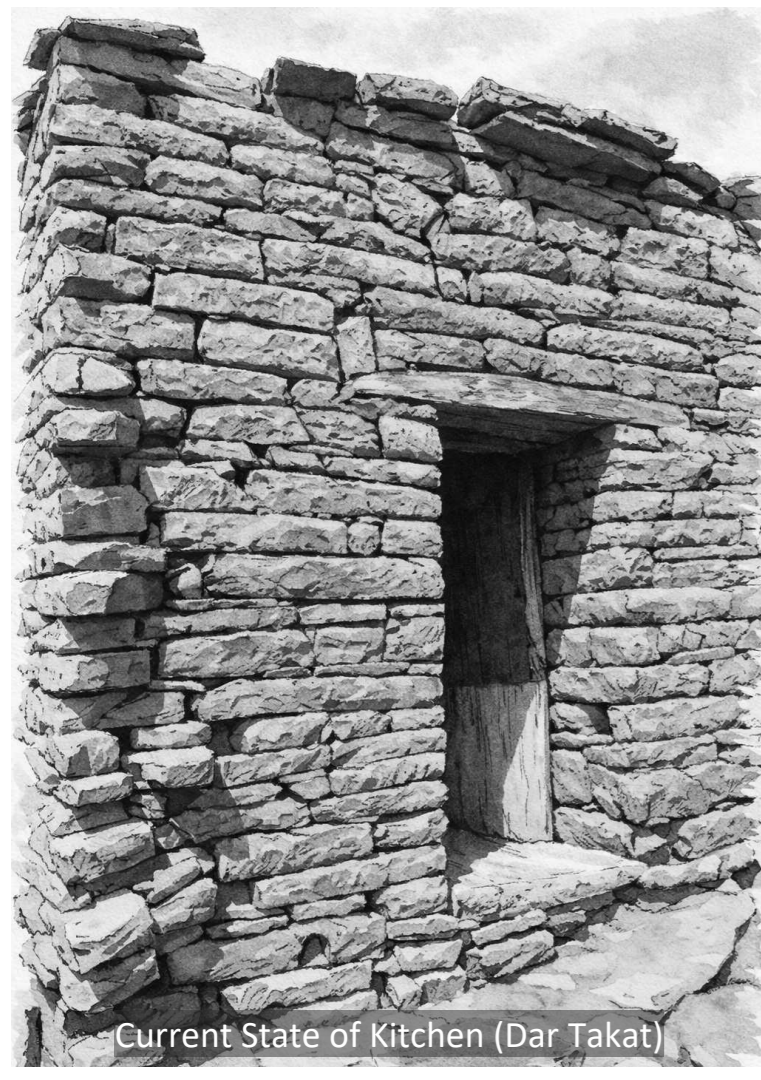
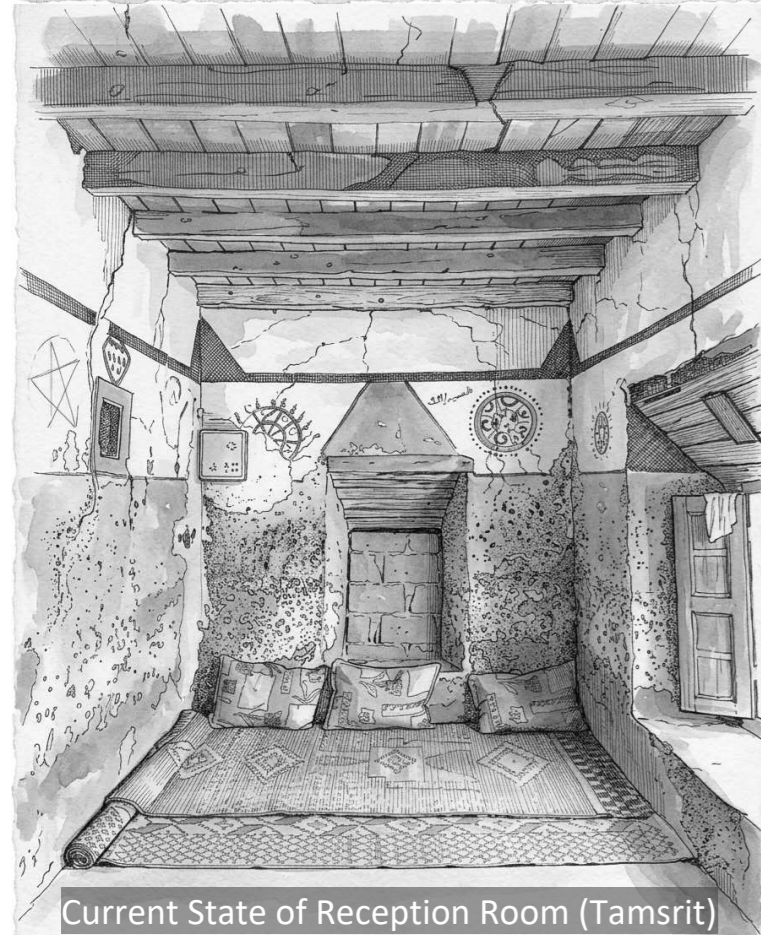
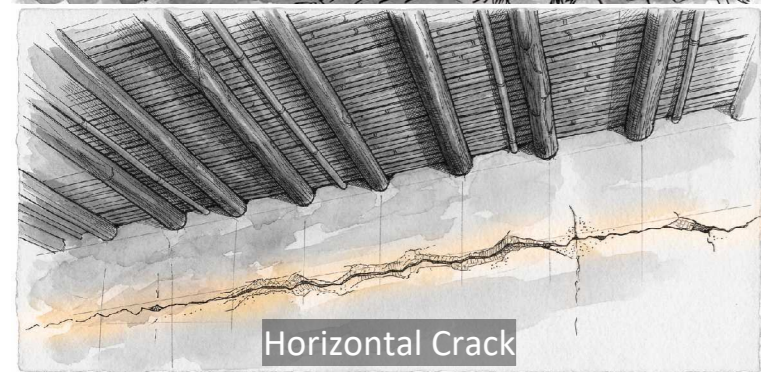


Phasing Strategy & Multi-Scalar Intervention

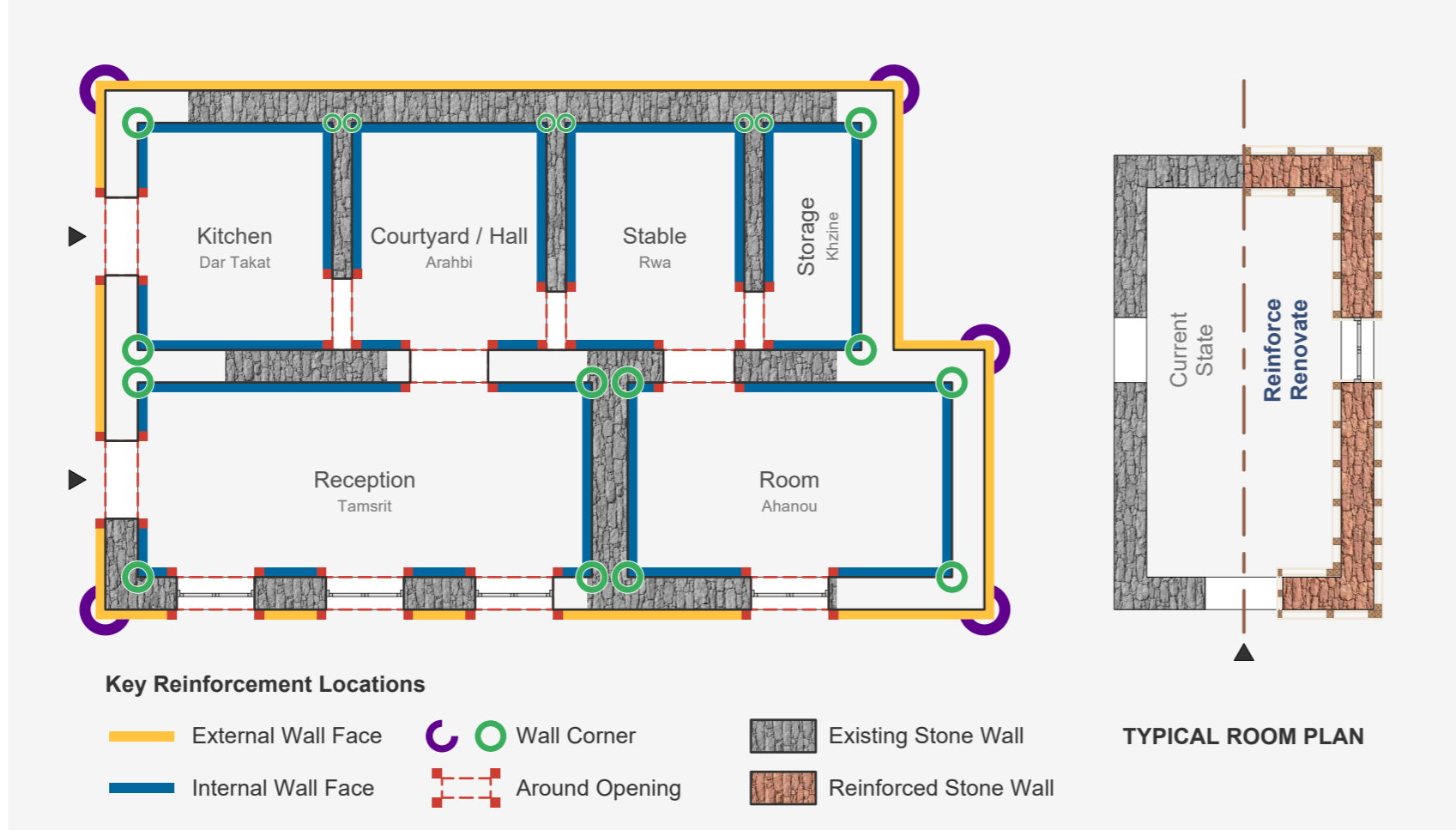
Architecture in the Aftermath of Disasters
Towards Sustainable and Community-Based Reconstruction
in Post-Earthquake Morocco

ROOM → HOUSE → CLUSTER OF HOUSES SCALE Short-Term (3-6 months)

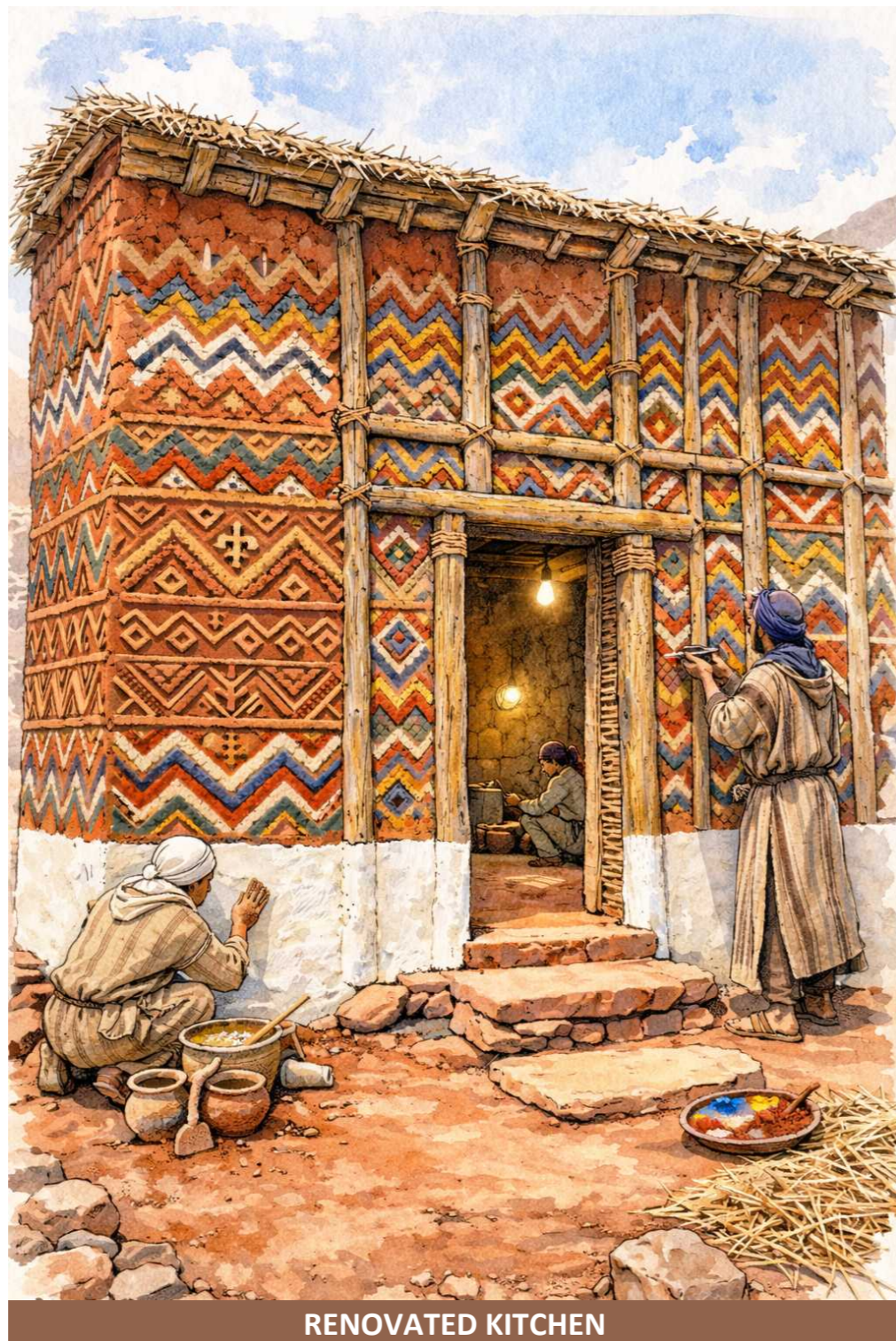
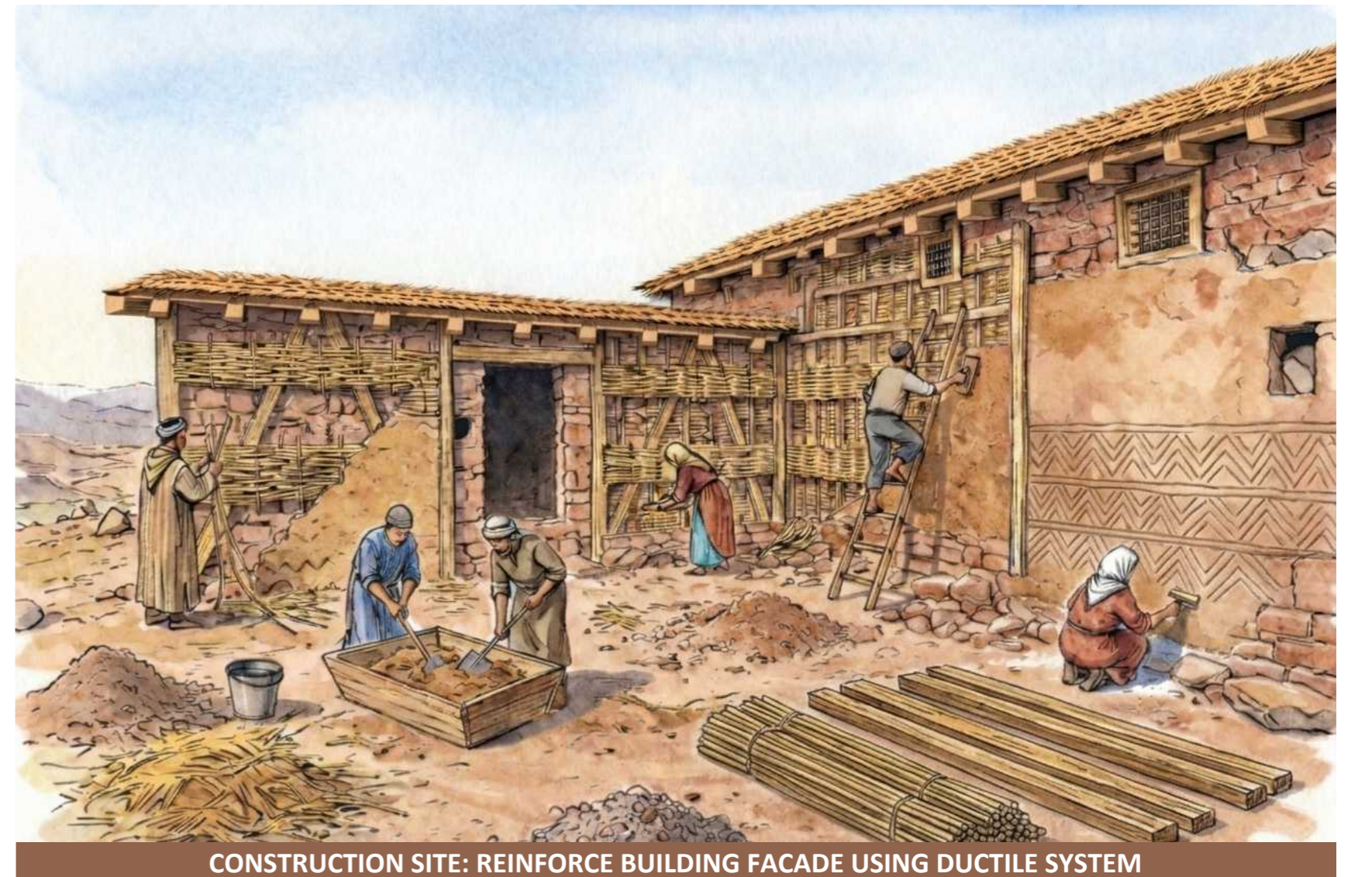
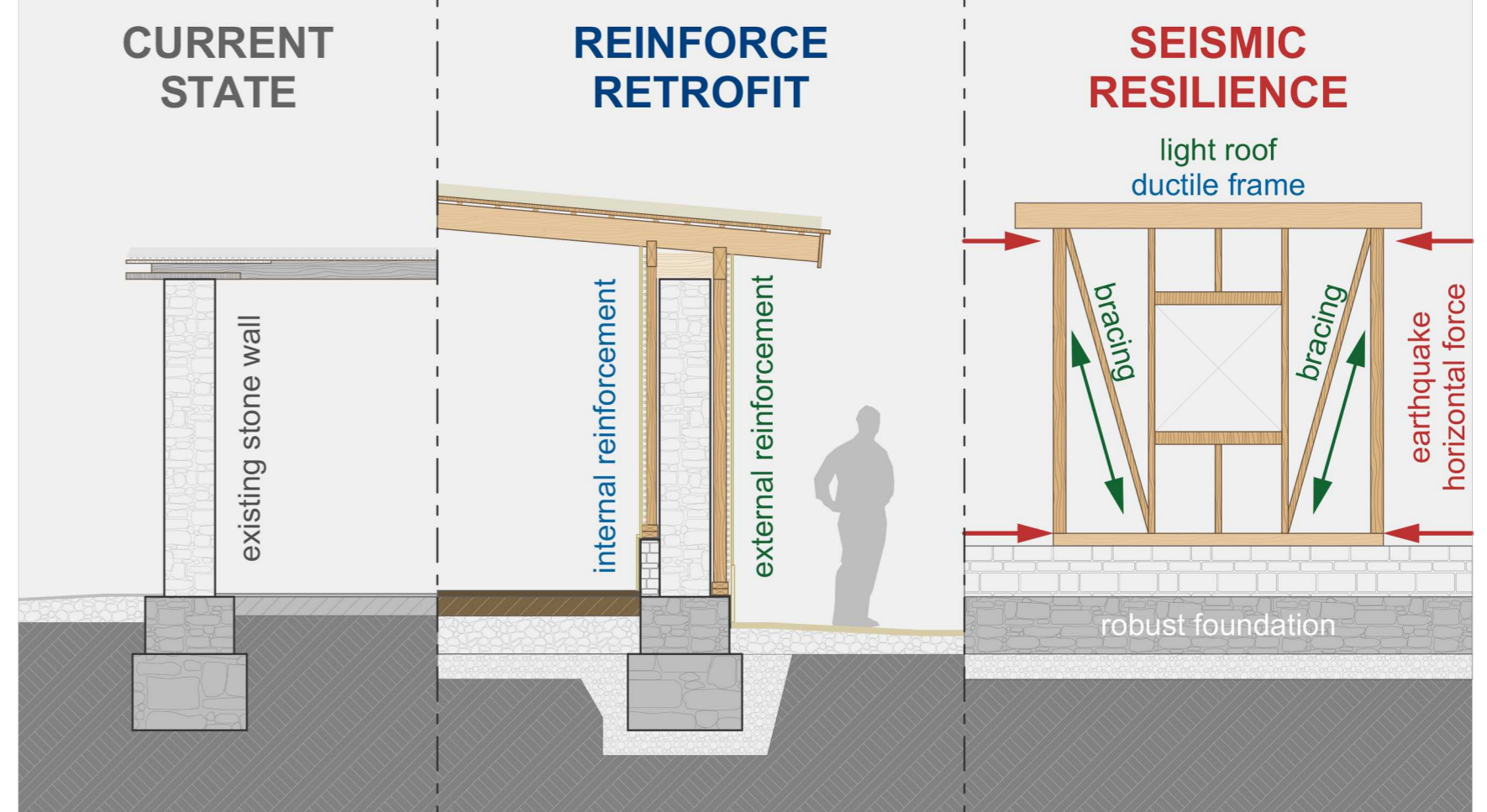
DAMAGE ASSESSMENT



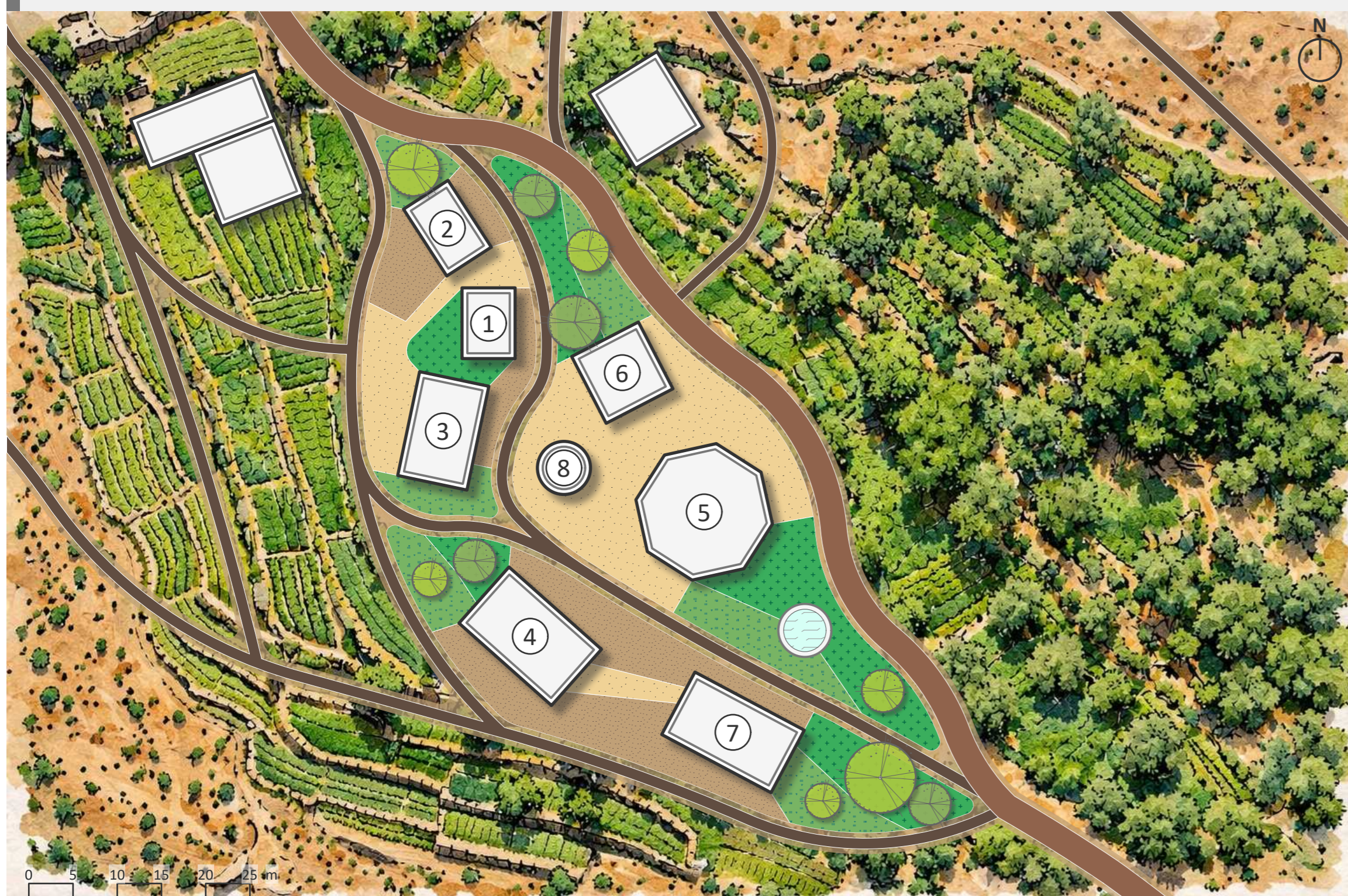
REINFORCE - RETROFIT PLAN



REINFORCE - RETROFIT SECTION

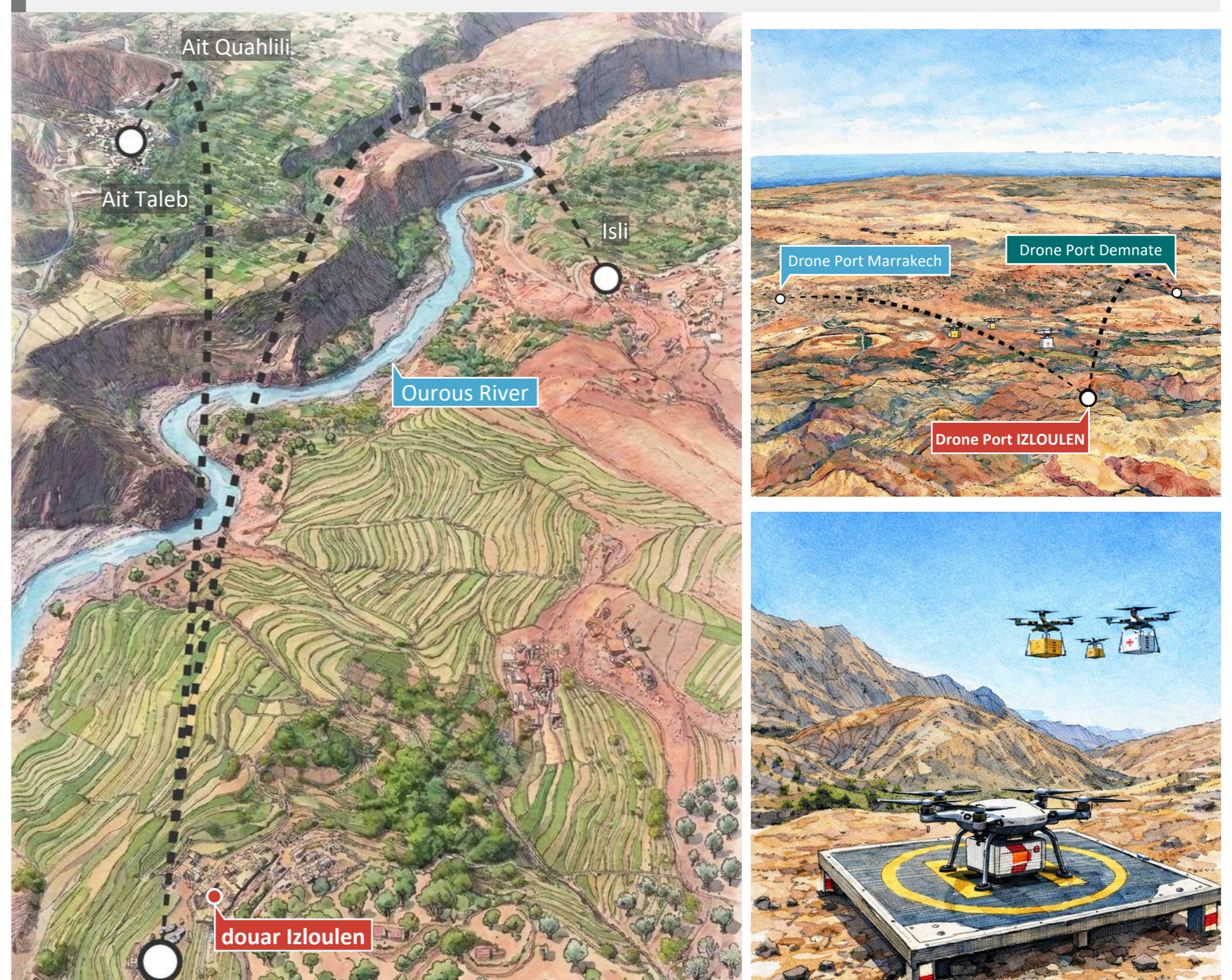


VILLAGE - COMMUNITY SCALE Mid-Term (1-3 years)



- 1 Kindergarten
- 2 Primary School
- 3 Health Post
- 4 Market Place
- 5 Mosque
- 6 Communal Oven
- 7 Drone Port
- 8 Comms Hub

TERRITORIAL & REGIONAL SCALE Long-Term (>3 years)



'Weaving' with **CONNECTION 'Thread': THE NEW DRONE PORT**

Reduce Isolation and Enable Rapid Support.