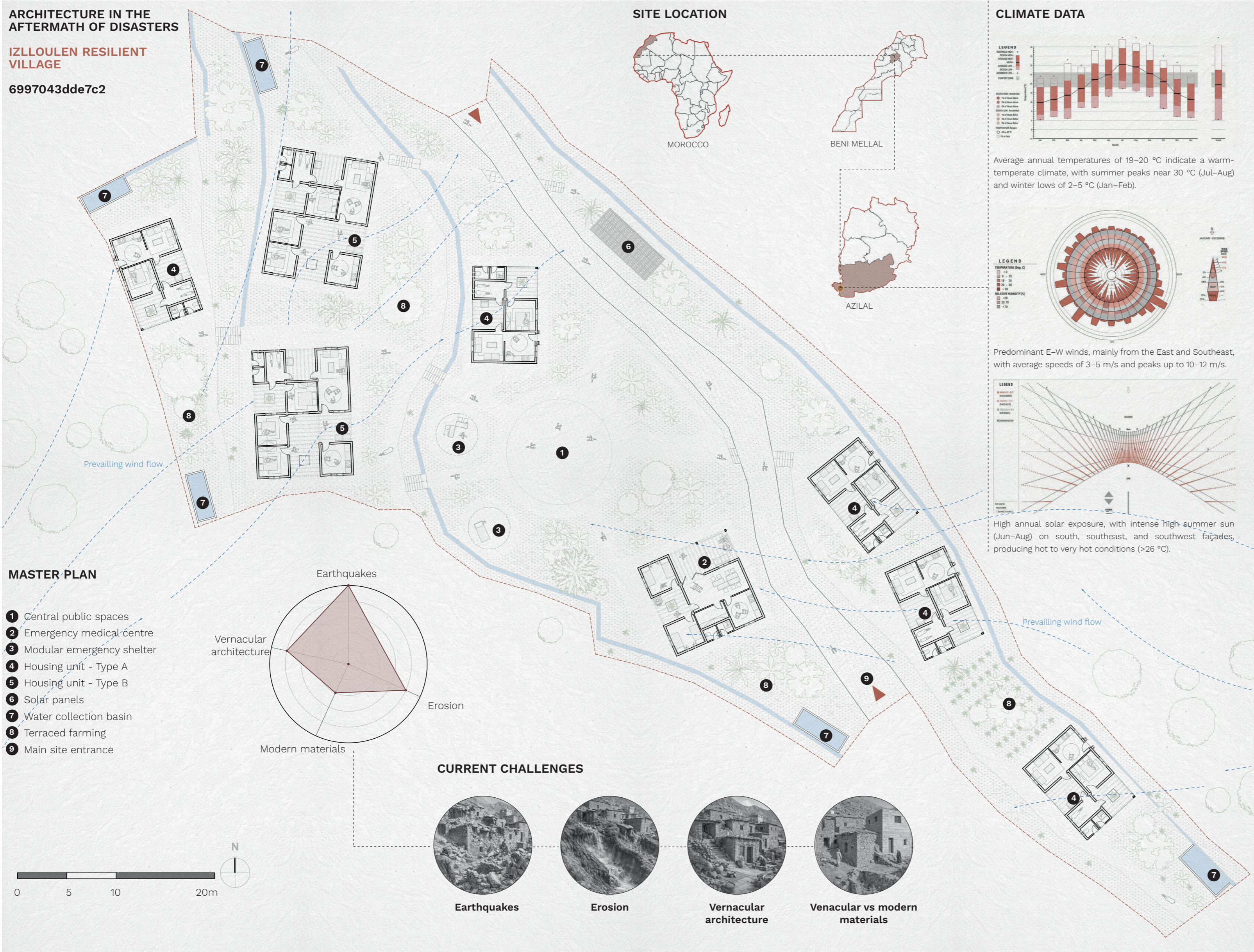


ARCHITECTURE IN THE AFTERMATH OF DISASTERS

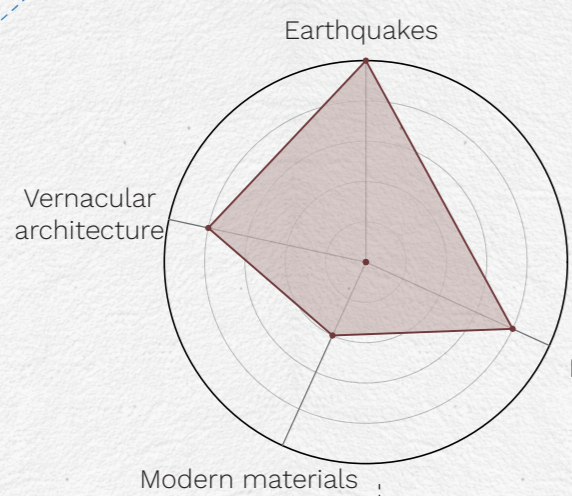
IZLLOULEN RESILIENT VILLAGE

6997043dde7c2

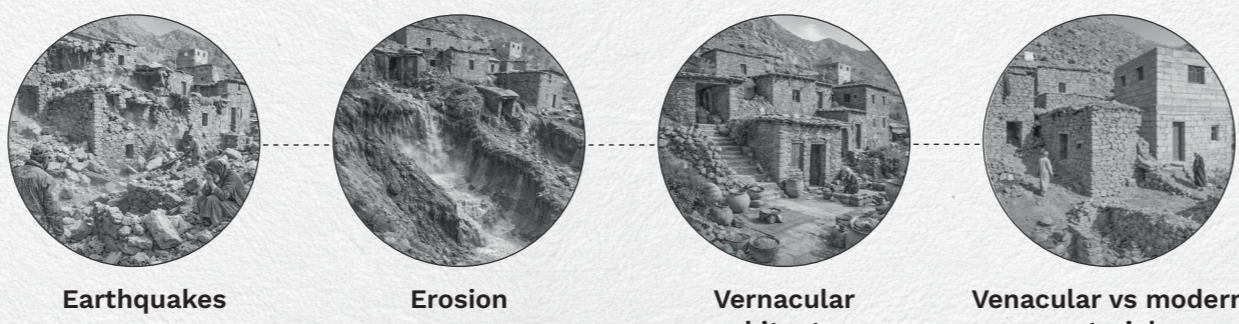


MASTER PLAN

- 1 Central public spaces
- 2 Emergency medical centre
- 3 Modular emergency shelter
- 4 Housing unit - Type A
- 5 Housing unit - Type B
- 6 Solar panels
- 7 Water collection basin
- 8 Terraced farming
- 9 Main site entrance



CURRENT CHALLENGES



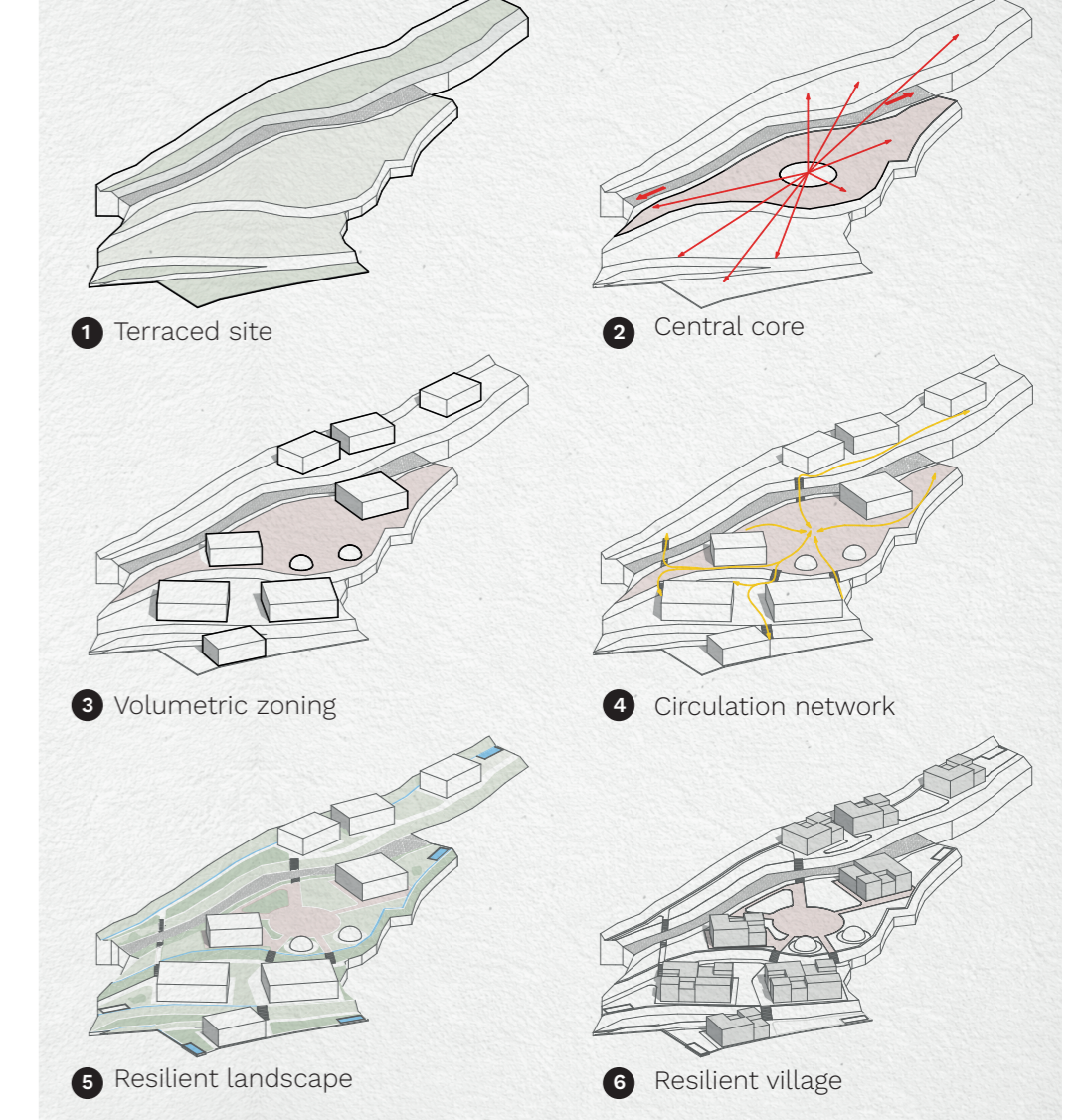
IZLLOULEN RESILIENT VILLAGE

Suspended in the majestic mountains of the Moroccan High Atlas, Izloulouen is a village whose centuries-old balance was violently fractured by the 2023 earthquake. Today, this wounded community faces major existential challenges. Beyond the post-seismic trauma and the constant threat of soil erosion that gnaws at the landscape, the village finds itself torn by a profound conflict: how to embrace the safety requirements of modernity while preserving the soul and identity of its vernacular architecture?

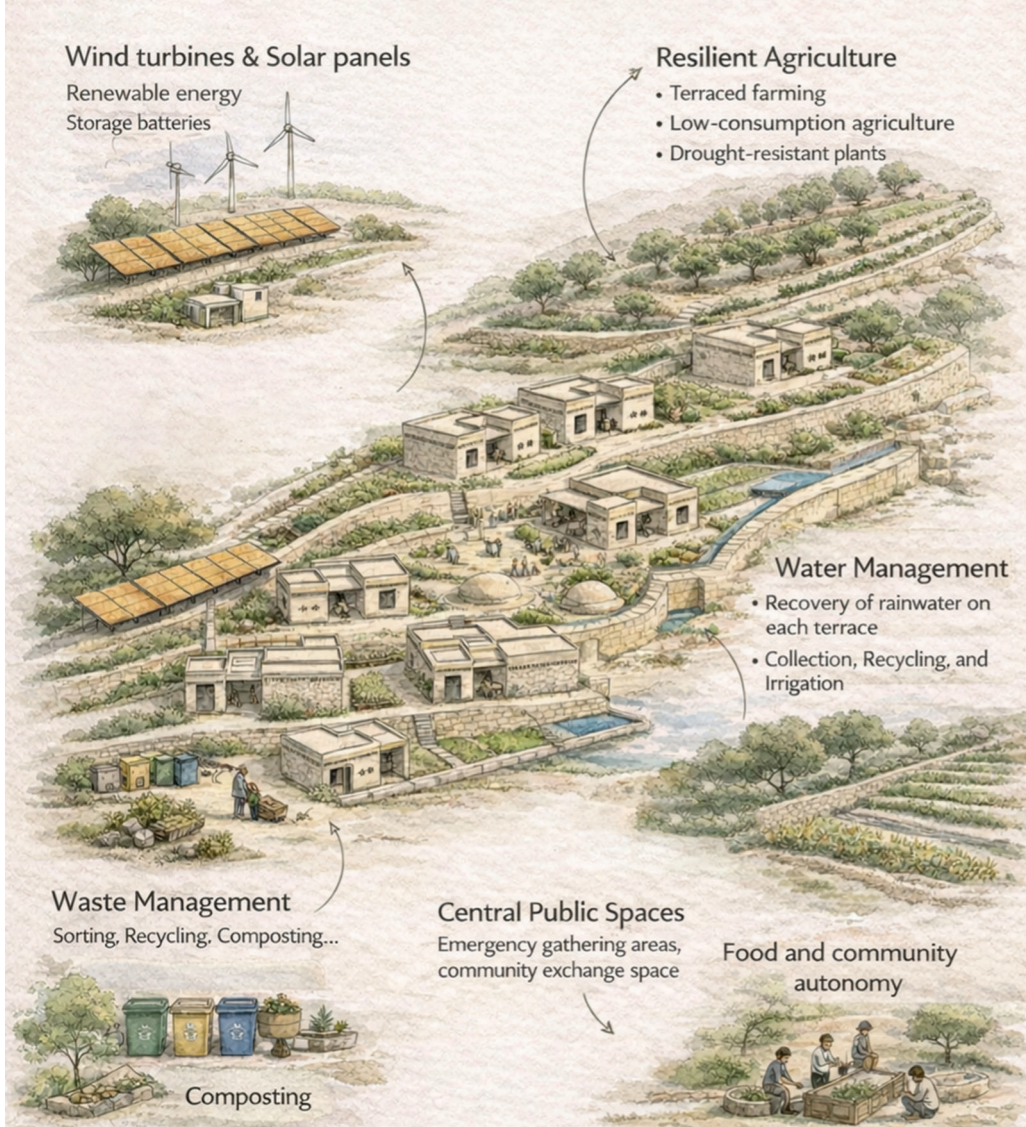
To heal these wounds and reconcile these opposing forces, the project "Izloulouen Resilient Village" unfolds like a protective embrace. The spatial layout is structured around a vibrant central core, conceived as the true social lung of the community. This unifying nucleus recreates the lost places of gathering and offers a response to the identity dilemma, reinterpreting the essence of ancestral Berber agoras to integrate them harmoniously into a contemporary dynamic of use.

From this nerve center, the master plan extends like a living organism where each line reflects a strategy of resilience. The topography is first stabilized through rigorous erosion control, creating a soothed foundation that dictates a network of fluid, efficient, and secure circulation paths. At the same time, the design of urban voids integrates seismic risk: squares and alleyways are dimensioned to function as protective refuge zones. Finally, driven by sustainable infrastructure harnessing solar and wind energy, this master plan shapes an autonomous and benevolent environment, offering residents the freedom to root themselves serenely toward the future.

CONCEPTUAL DEVELOPMENT



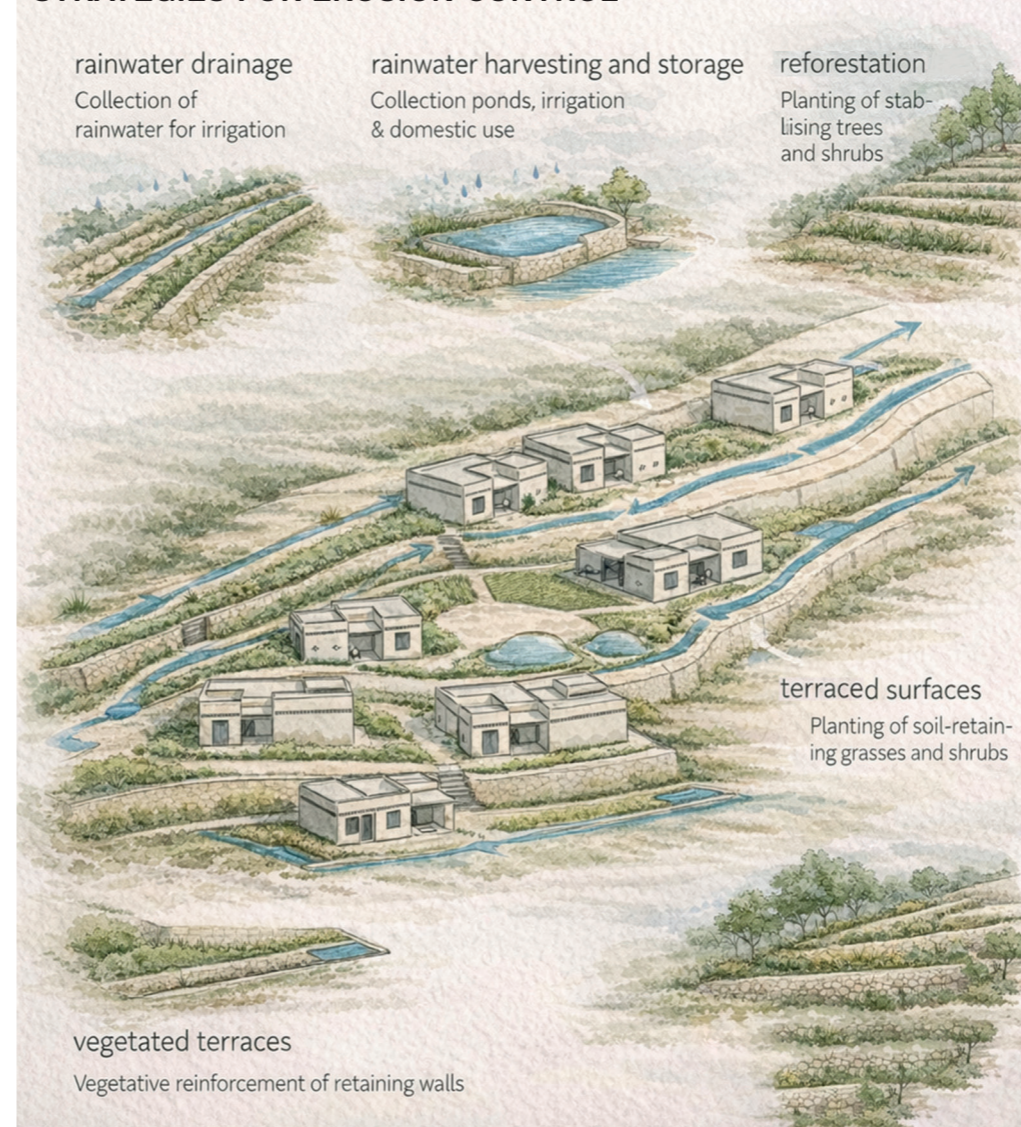
STRATEGIES FOR SUSTAINABLE & RESILIENT VILLAGE



STRATEGIES FOR EFFICIENT & SAFE CIRCULATION



STRATEGIES FOR EROSION CONTROL



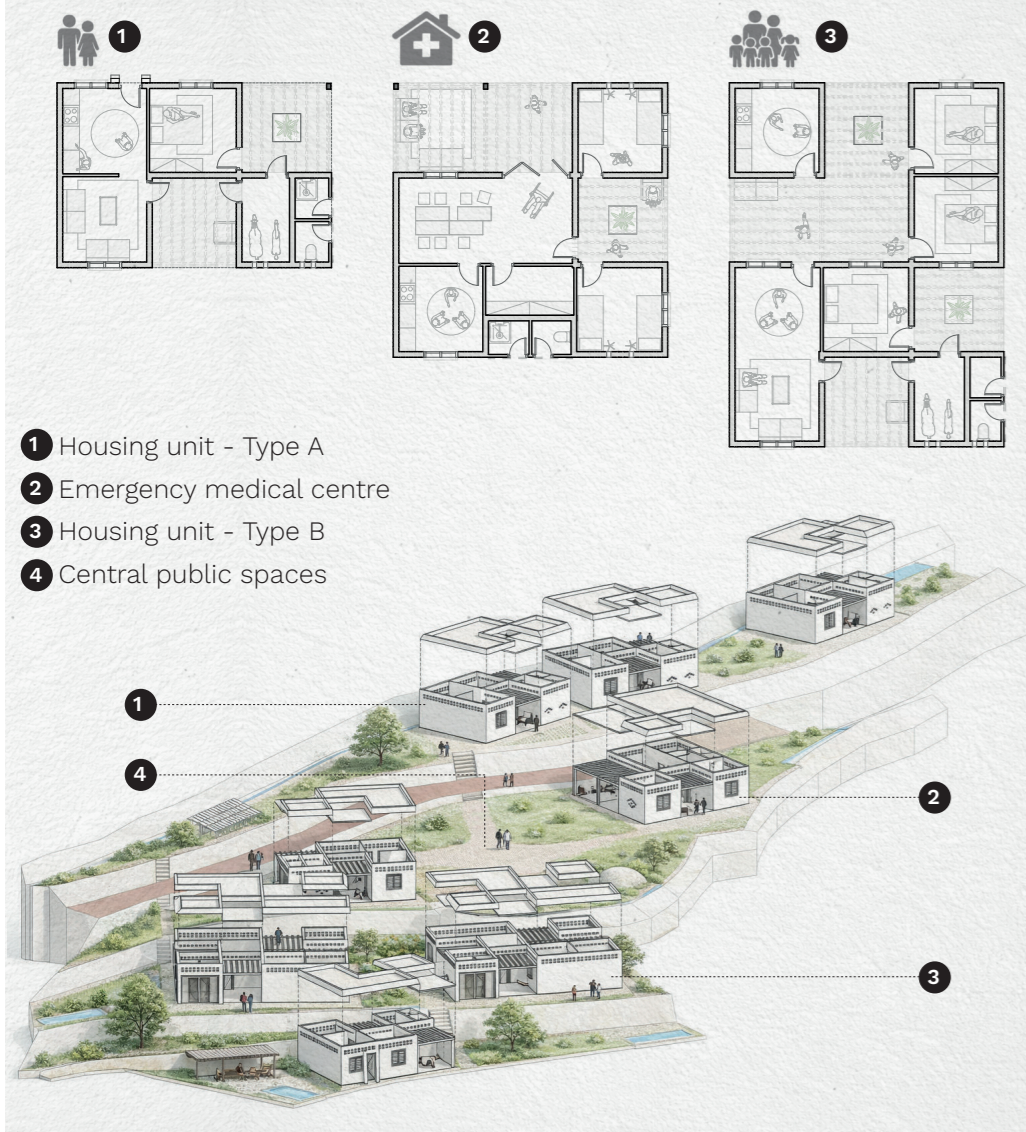
IZLLOULEN RESILIENT VILLAGE | STREET VIEW | AUTUMN



IZLLOULEN RESILIENT VILLAGE | STREET VIEW | SPRING



COMPONENTS & FUNCTIONS



IZLLOULEN RESILIENT VILLAGE | AERIAL VIEW



IZZLOULEN RESILIENT HOUSE | HOUSING UNIT TYPE A

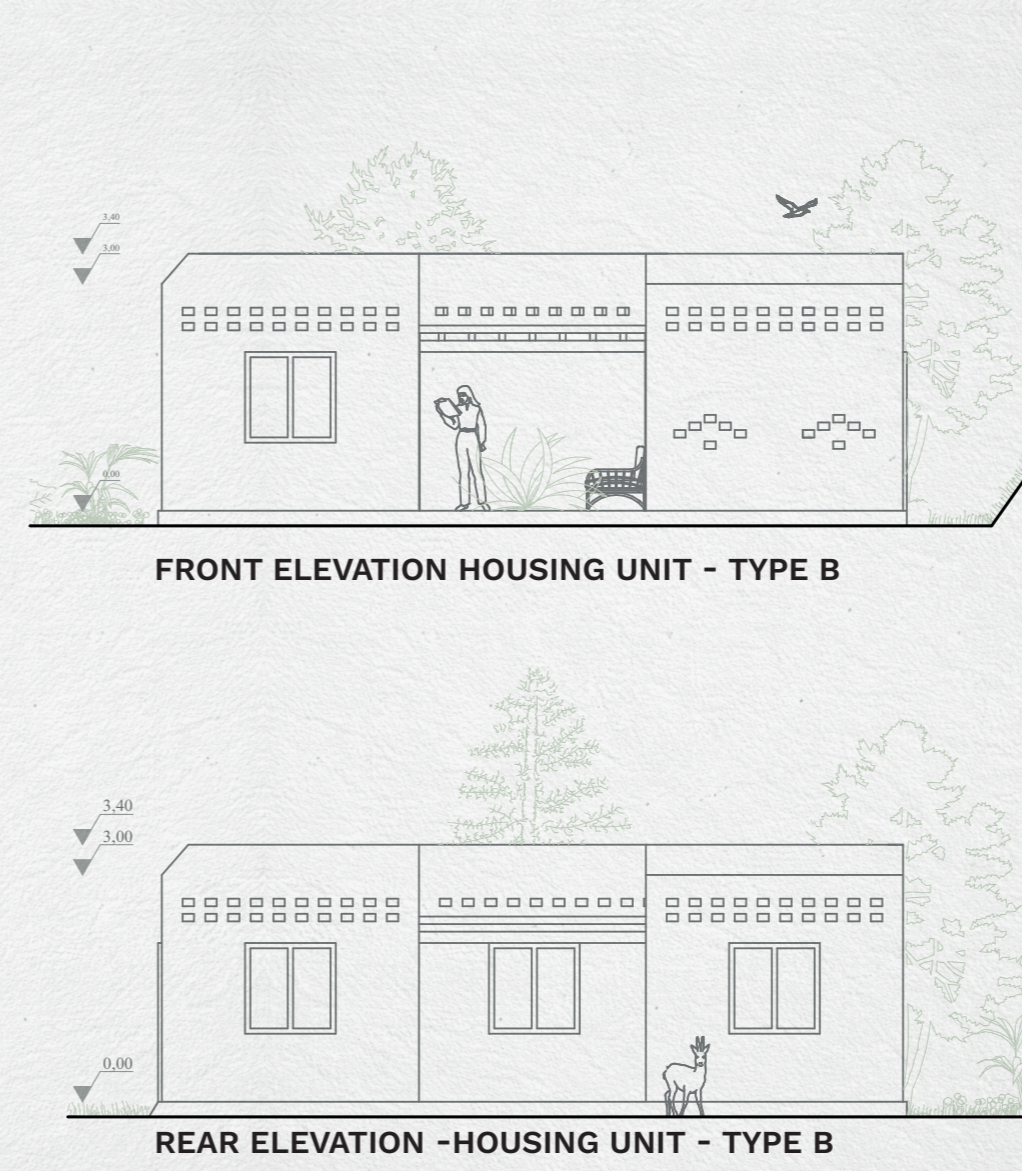
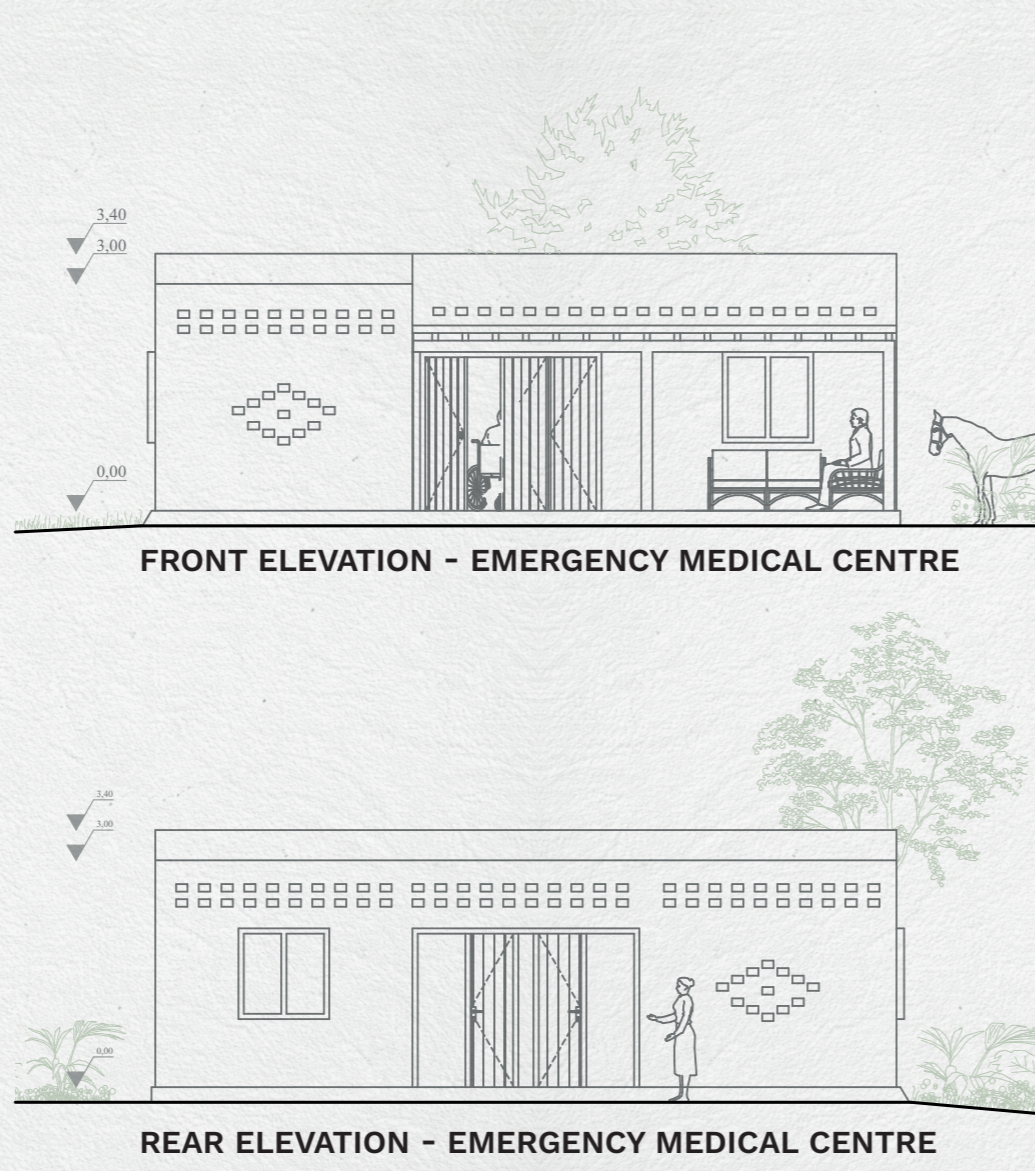
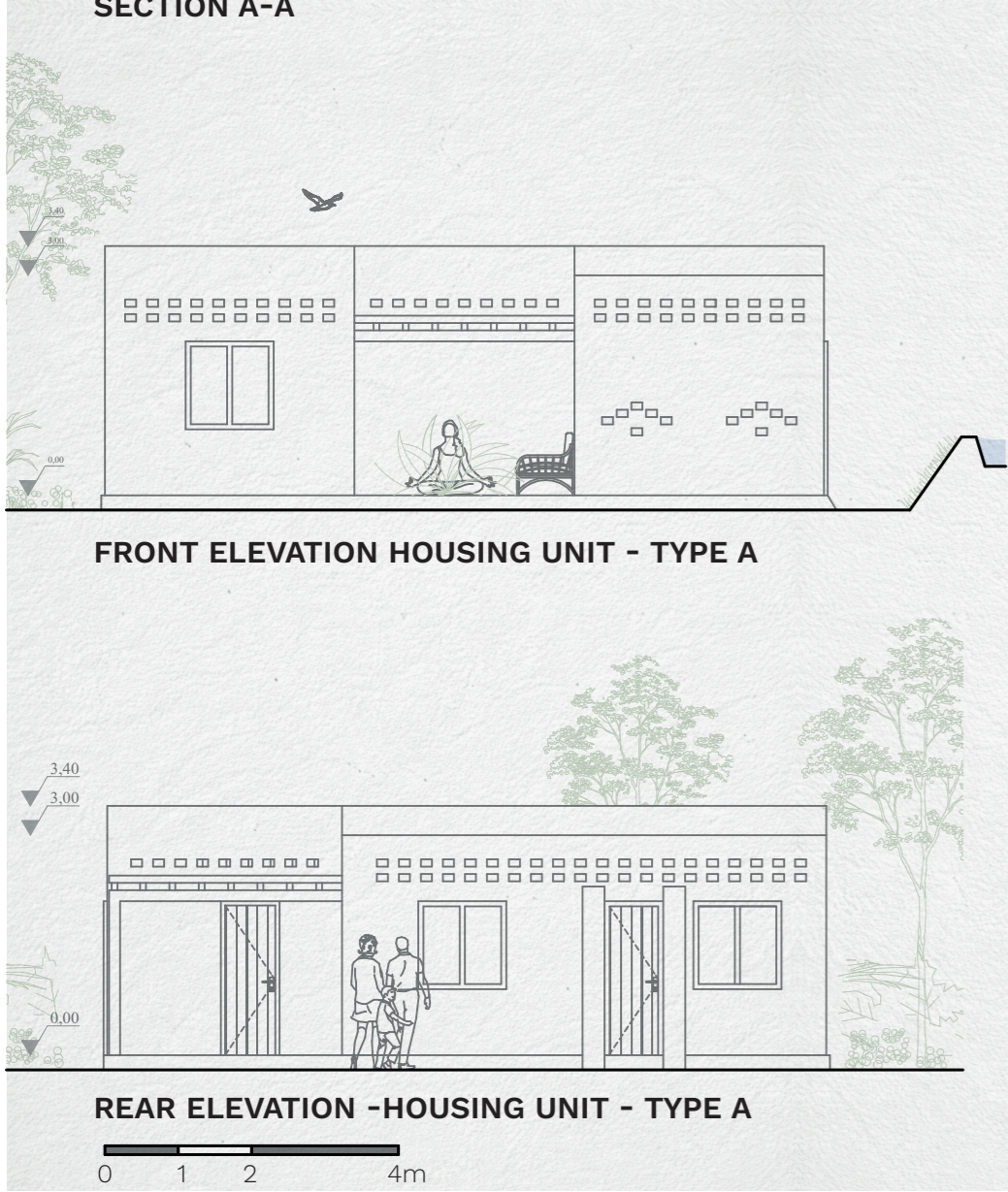
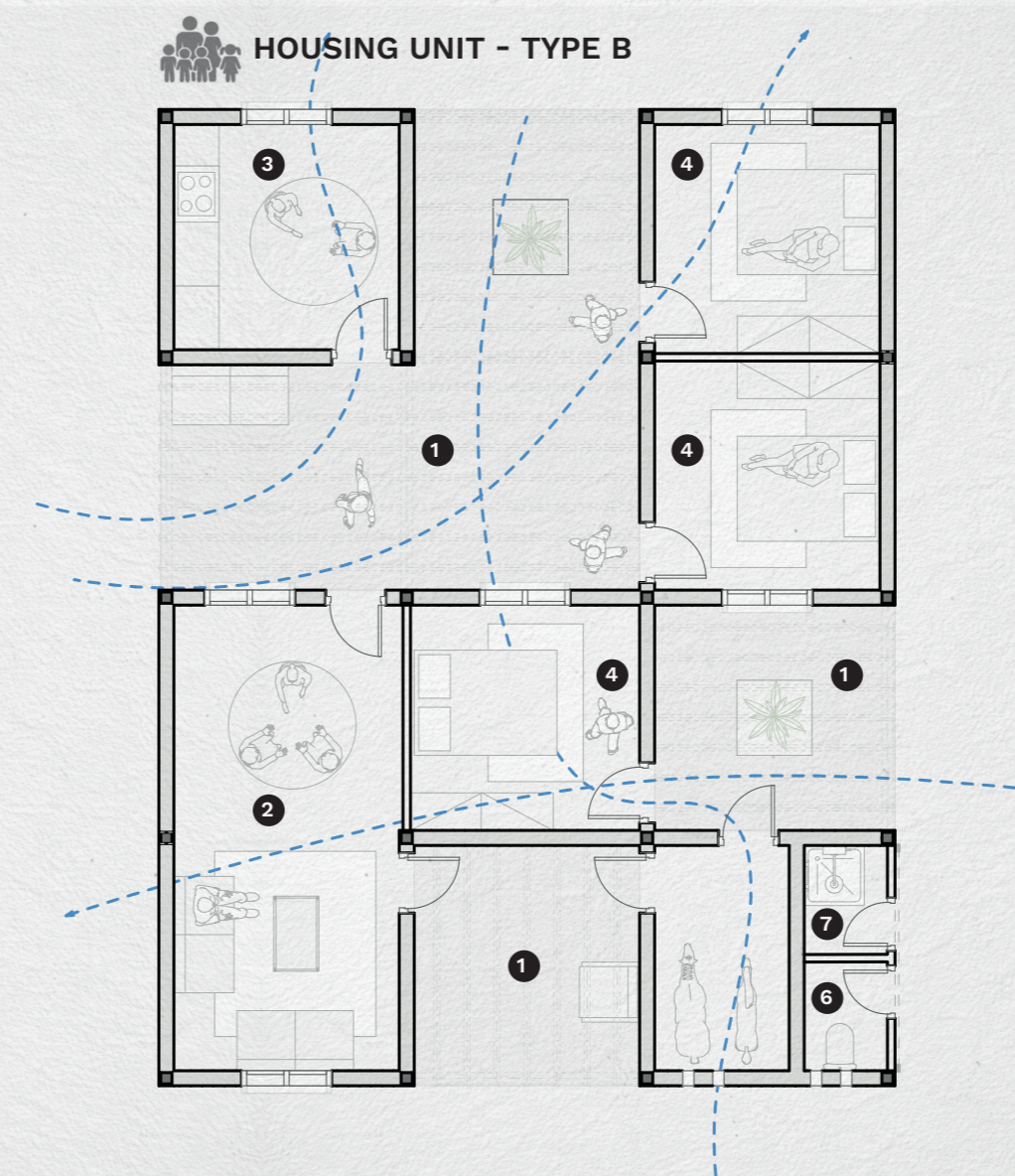
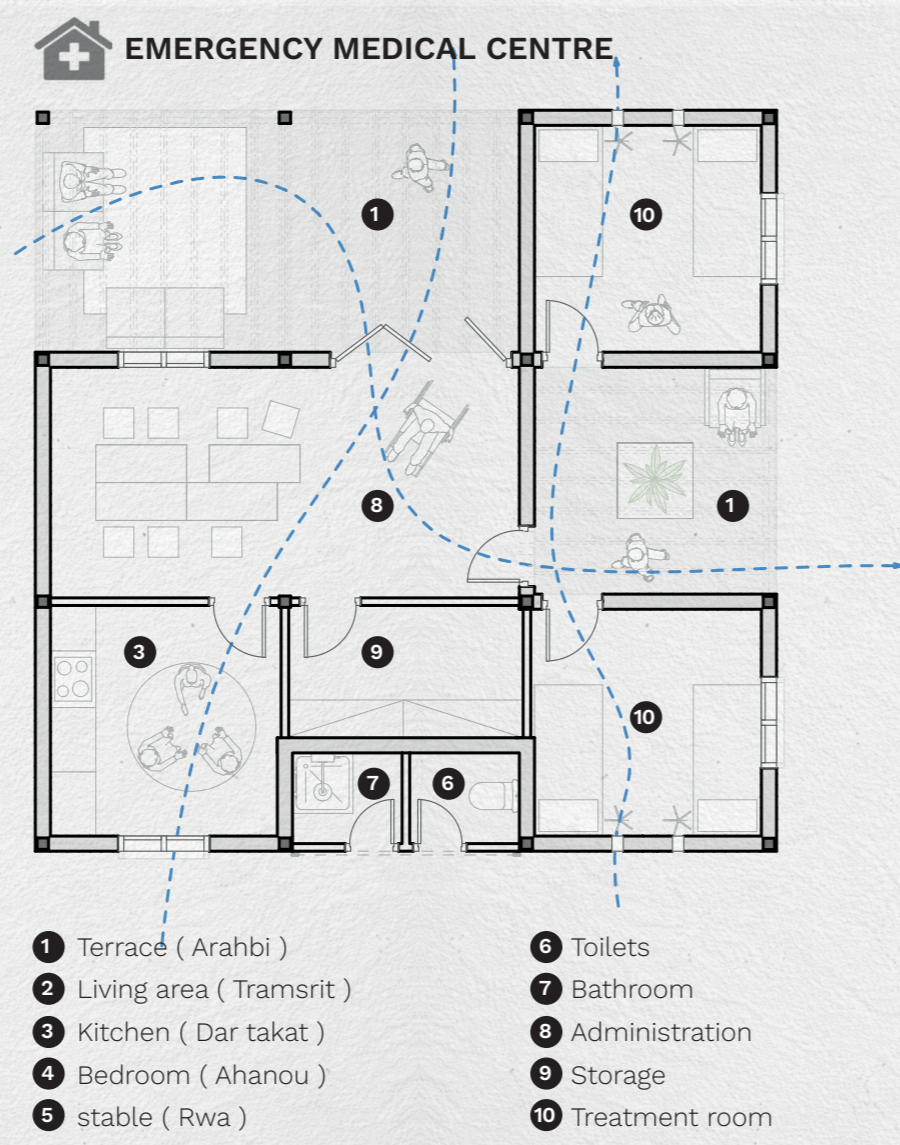
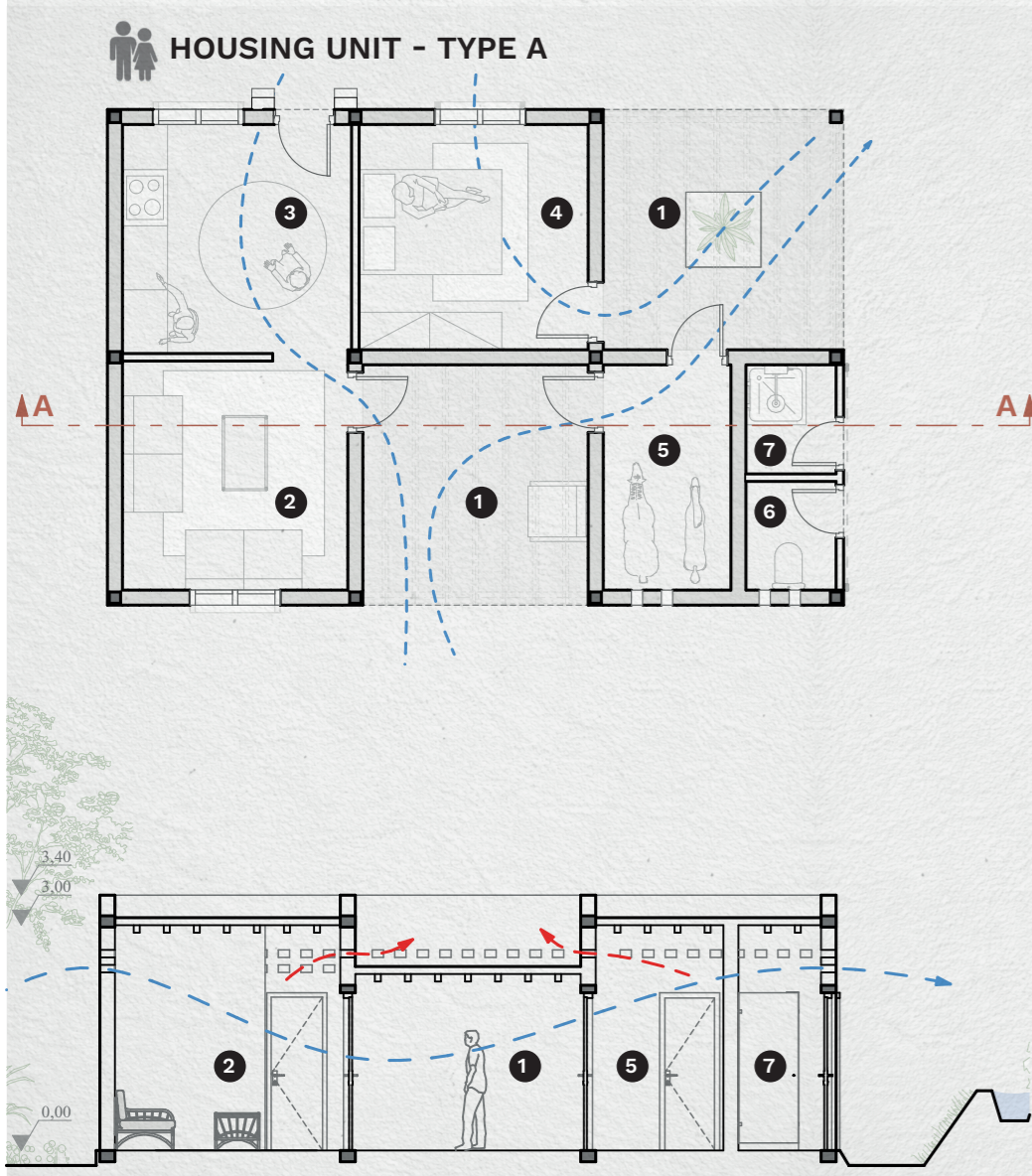
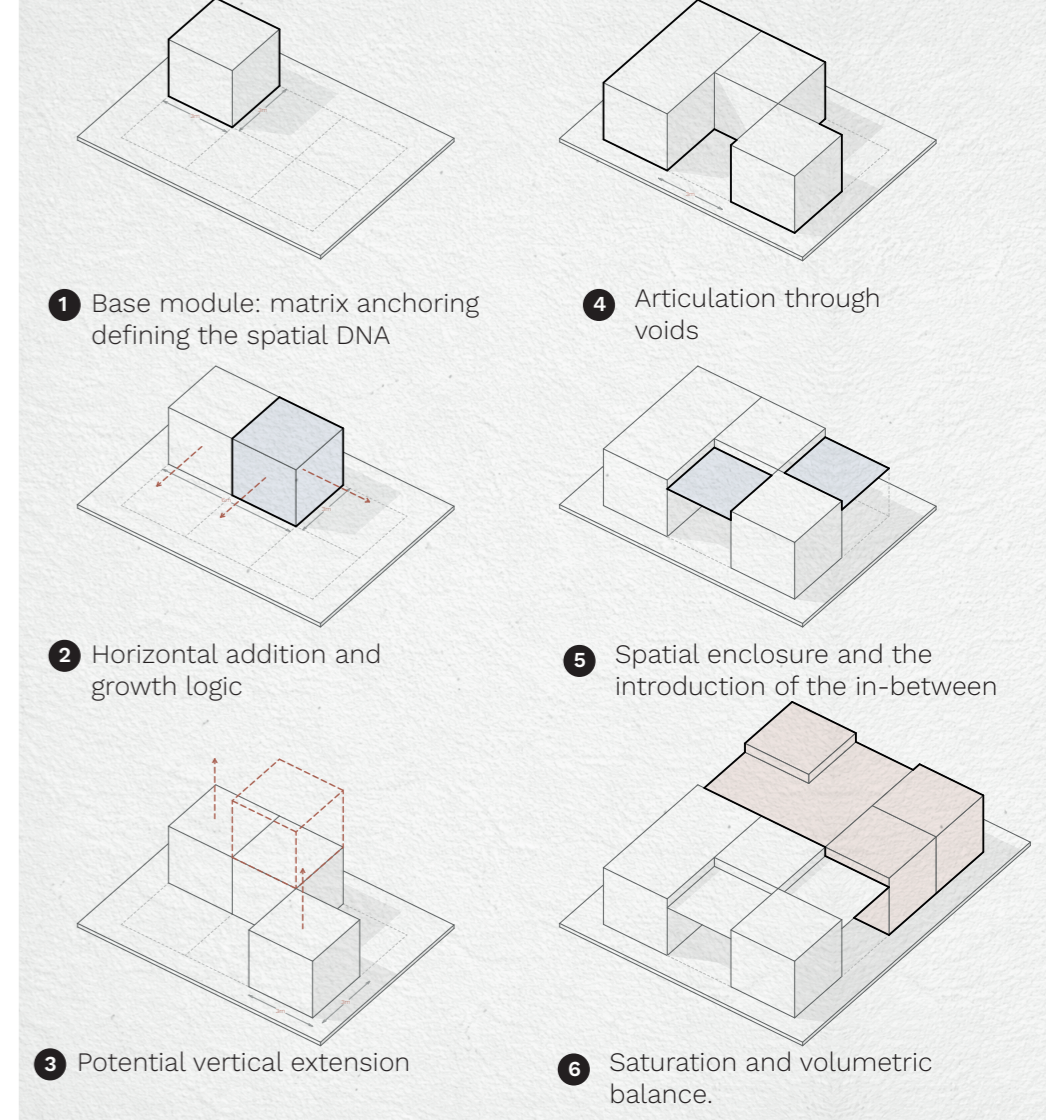
IZZLOULEN RESILIENT HOUSE

The 2023 earthquake tragically exposed the vulnerability of Izzoulouen's vernacular housing model. The absence of structural tie beams and the rigidity of the ancestral walls yielded under the violence of the tremors, revealing the limits of a constructive heritage in the face of the forces of the earth. From that moment onward, reconstruction imposes a delicate reflection: how to design a dwelling that guarantees the absolute safety of its occupants without erasing the centuries-old architectural identity of the High Atlas?

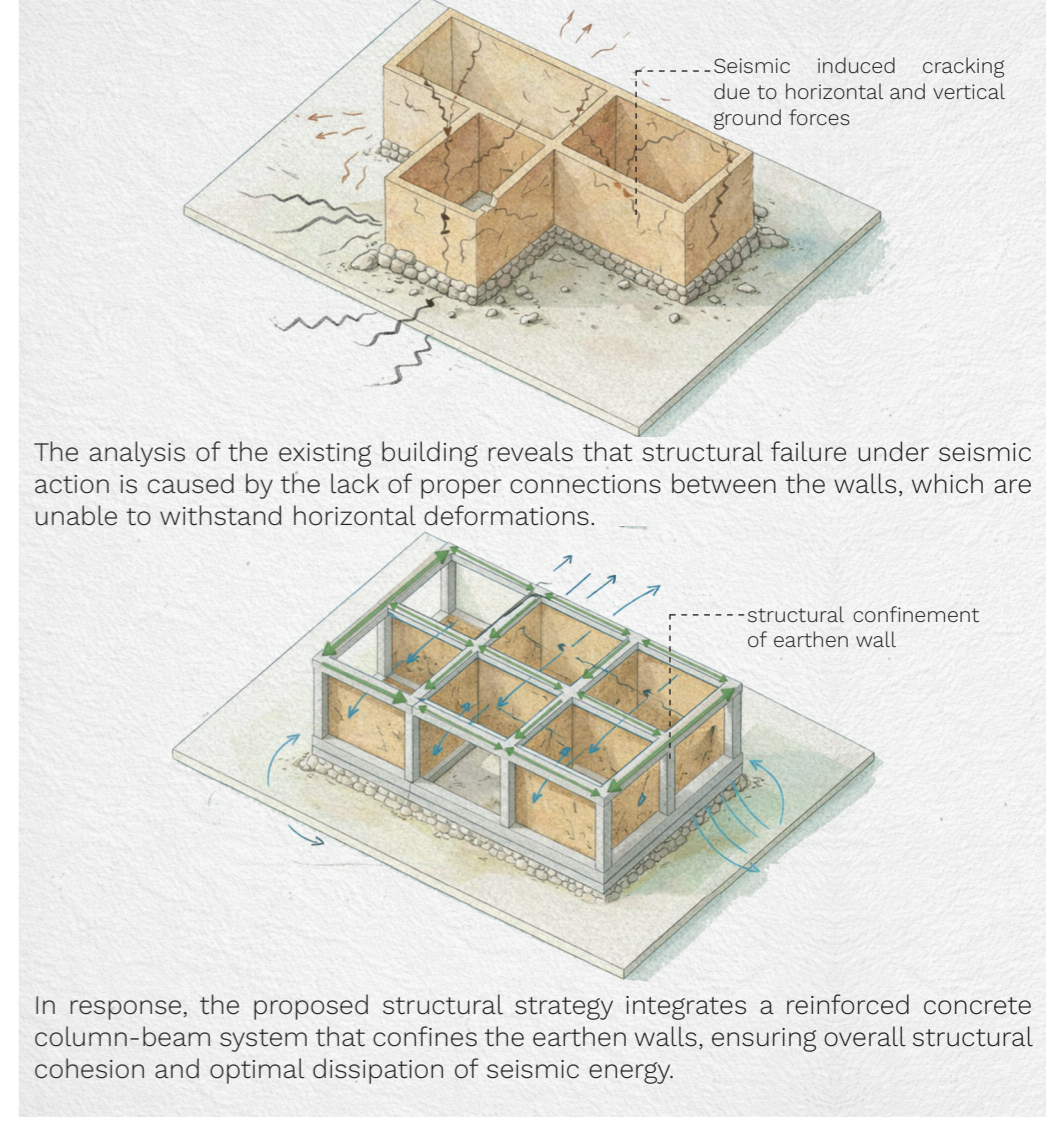
To meet this challenge, the resilient house stands as a protective sanctuary, jealously preserving the cultural soul of the village. The cornerstone of this design rests on the integration of an independent seismic-resistant structural frame. This robust framework, the true backbone of the building, frees the interior space to give rise to flexible and evolving units. Organically adapting to the growth of households or to the integration of vital equipment, each module accompanies the transformations of the community and reflects the living dynamics of the douar.

In continuity with this vision, the materiality of the structure celebrates a harmonious alliance between safety engineering and traditional craftsmanship in order to confront the harshness of the mountain climate. The building is anchored on a solid stone plinth, a natural barrier against moisture, while the rammed earth infill walls envelop the interiors in optimal thermal comfort. Crowned by a lightweight roof structure dissipating seismic energy, this architecture relies on a simple assembly process, free of heavy machinery. From the anchoring of the foundations to the erection of the structural frame, and then to the compaction of the raw earth, this participatory approach enables the inhabitants to reclaim their reconstruction, forging unshakable homes resolutely oriented toward the future.

CONCEPTUAL DEVELOPMENT



STRUCTURE



WALL INFILL

