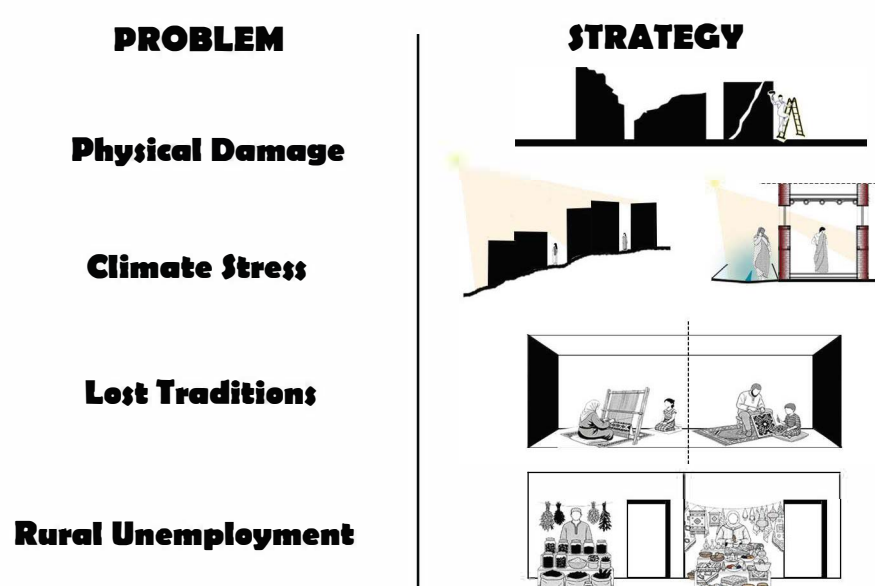


# RADIX RUBRA

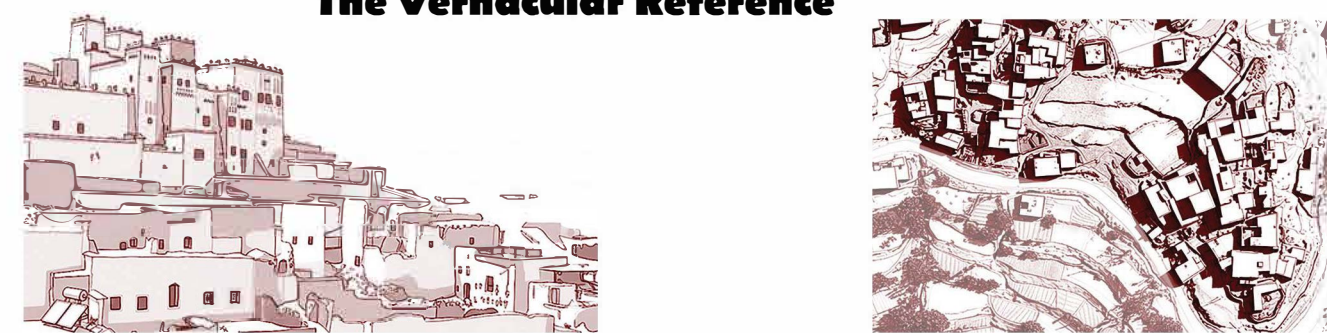
Rooted innovation through transformation without rupture



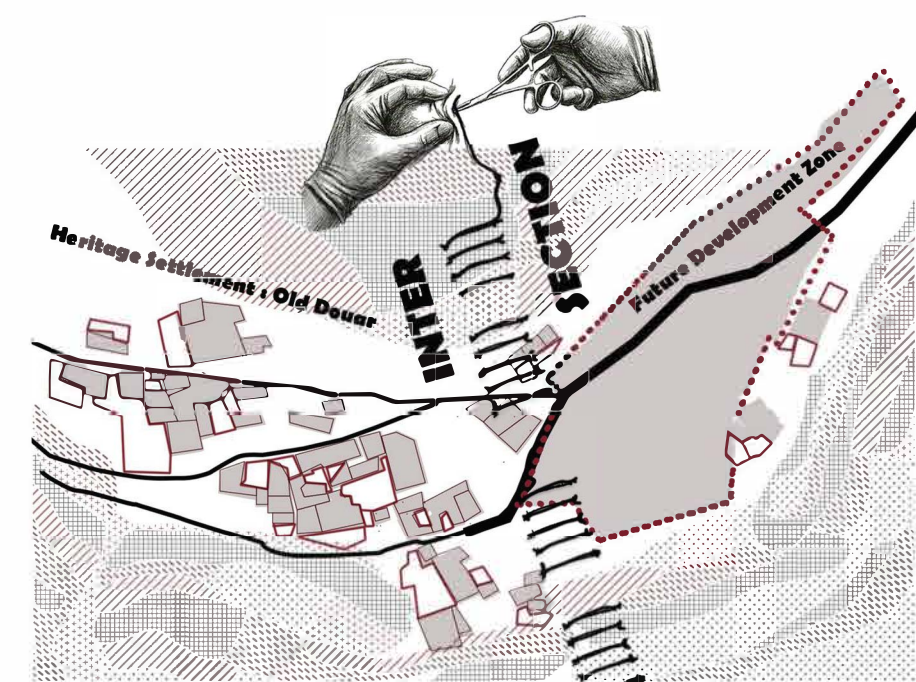
This project emerges from the memory of the red landscape in Morocco's oasis villages. Rather than erasing the existing village fabric, it reads its layers and allows the new settlement to grow from its roots. The past is treated not as a remnant, but as a living ground. The new does not break from the old; it continues its rhythms, traces, and spatial memory while clearly expressing its own time. This approach represents a rebirth that makes roots visible by balancing preservation and transformation. Transcending a mere conceptual intention, this rebirth draws its strength directly from the physical and climatic realities of the site. By utilizing the thermal mass of traditional adobe and the shading morphology of its interlocking narrow streets, the design offers a passive and sustainable response to the harsh desert climate. The historic 'segia' water channels and terraced farming plots that give life to the region are envisioned not merely as landscape elements, but as active infrastructures driving the socio-economic engine of the new settlement. Ultimately, by revitalizing Morocco's local craftsmanship and land-based culture of collective labor (imece) through a contemporary spatial organization, this intervention establishes a mechanism for both ecological and cultural resilience.



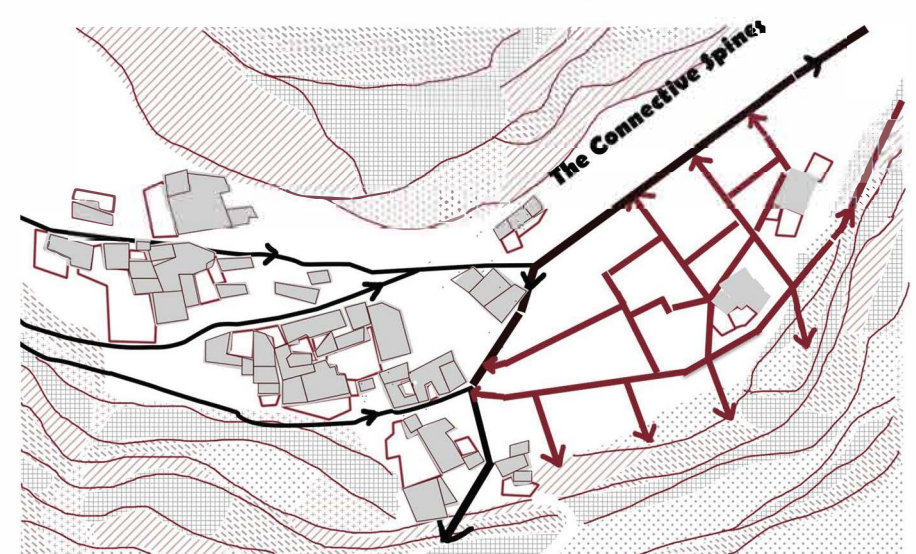
### The Vernacular Reference



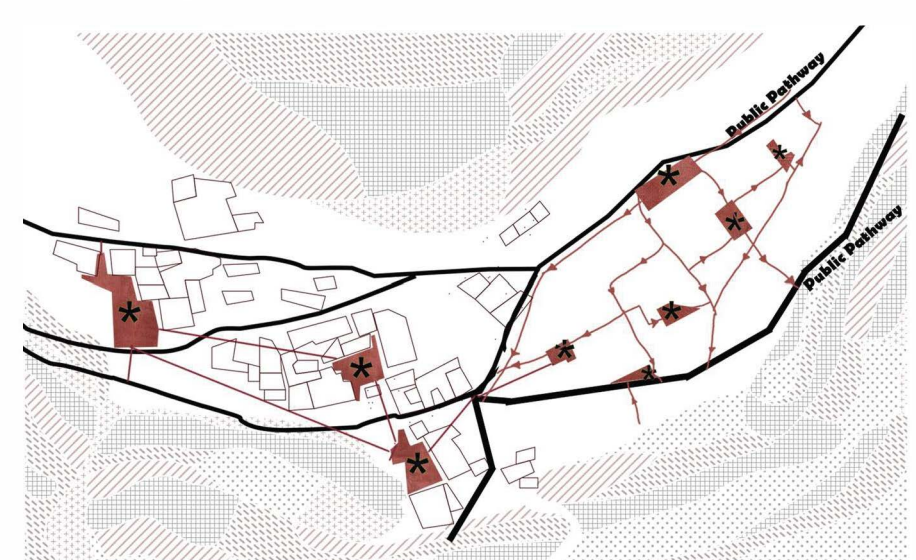
### Contemporary Interpretation



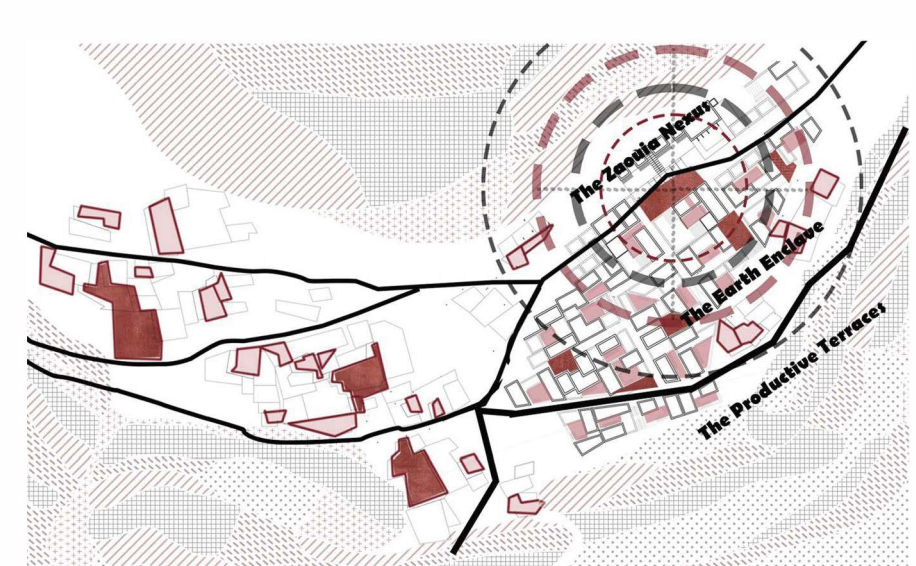
**01 Understanding the historical fabric.**



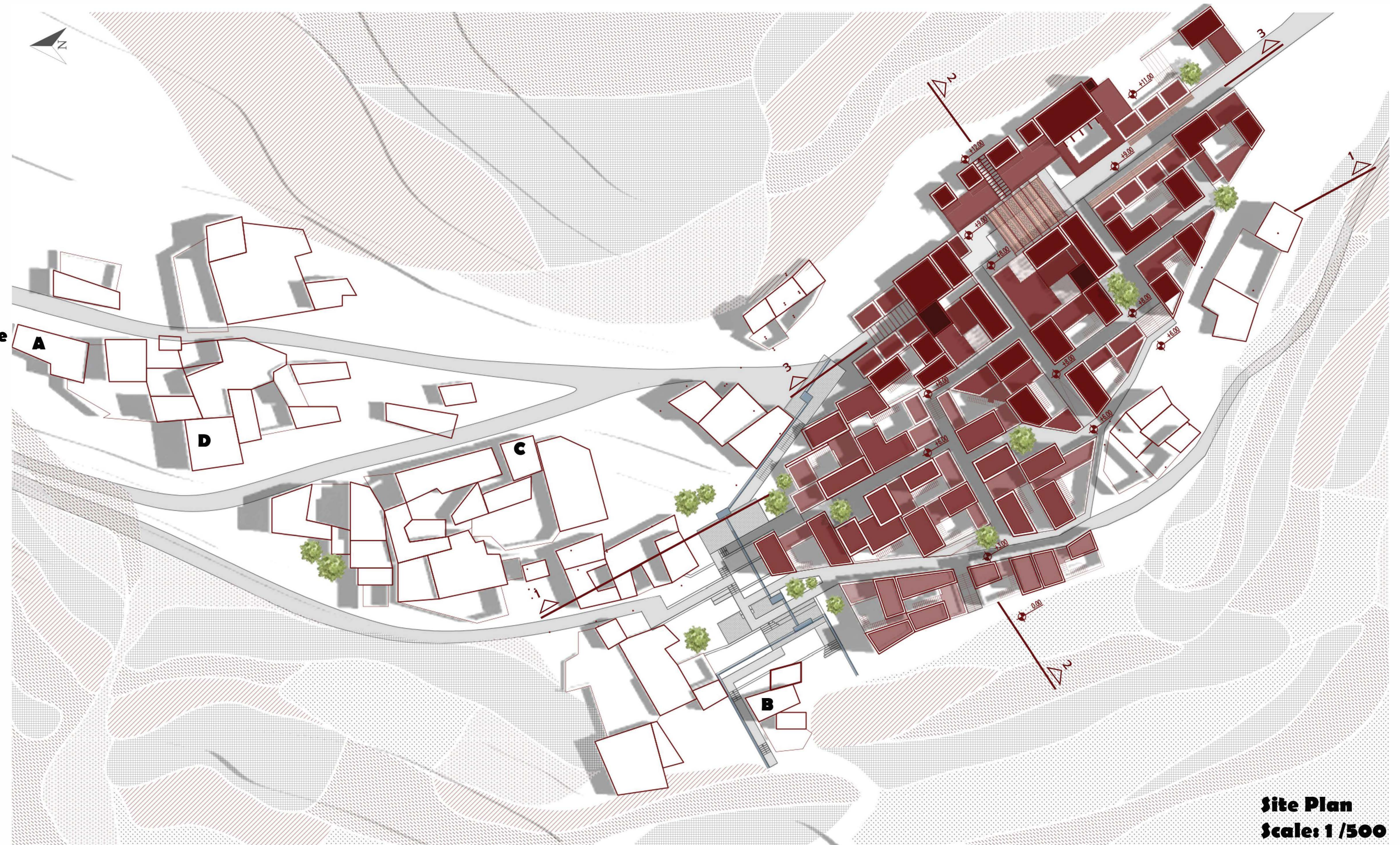
**02 Axes and Rooting into the Old Village**



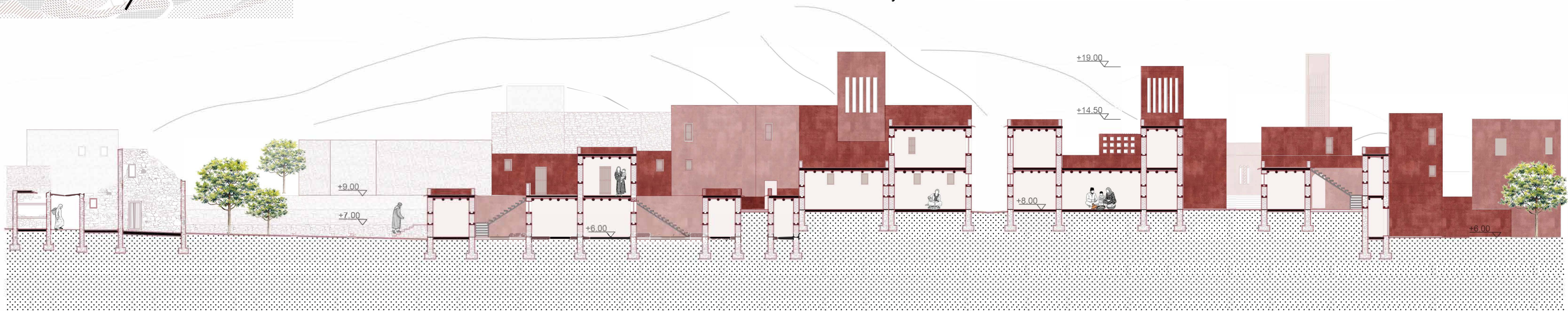
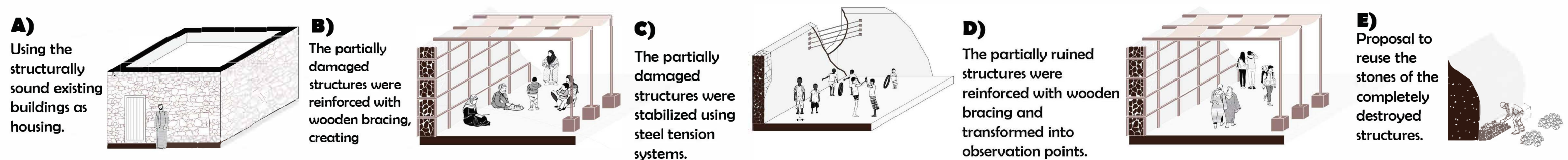
**03 Analyzing Voids and Creating Small Plazas**



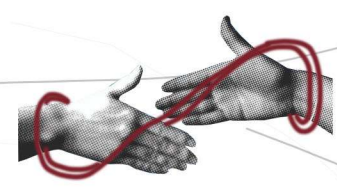
**04 Concentric Zoning: From Public Square to Productive Lands**



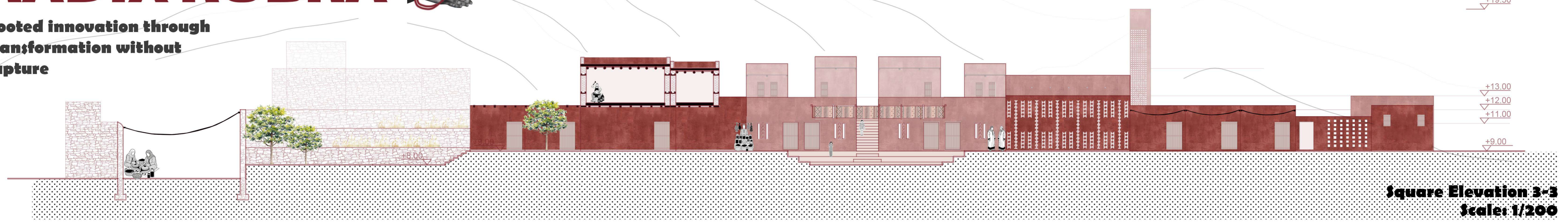
**Site Plan**  
Scale: 1 / 500



# RADIX RUBRA



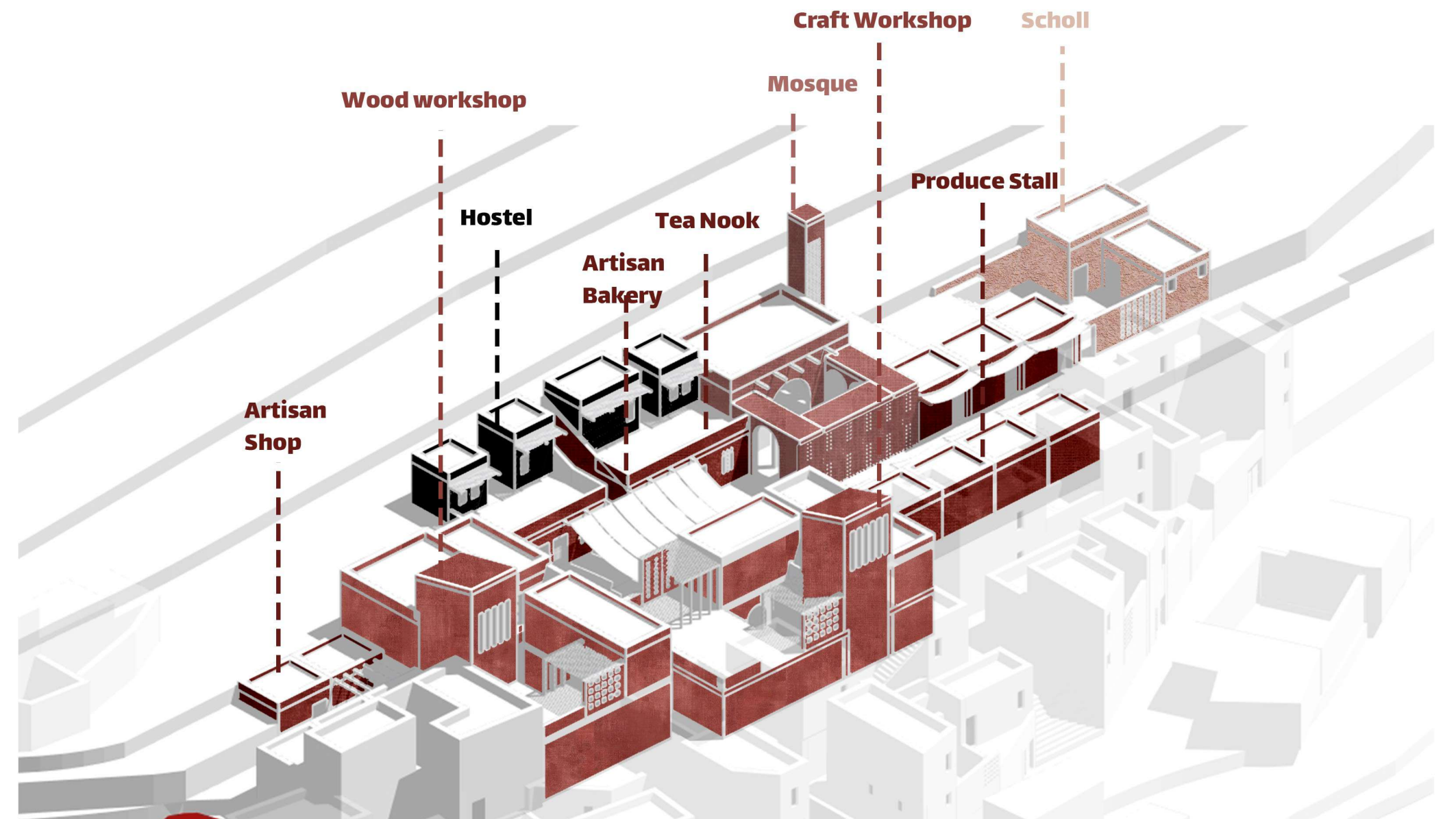
**Rooted innovation through transformation without rupture**



**Square Elevation 3-3**  
Scale: 1/200



A buffer zone has been established between the old village fabric and the new settlement. This buffer zone functions as an integrated landscape area that preserves the character of the old settlement while providing a gradual transition to the new living environment.



The village square, conceived as the heart of the project, is positioned along the main road in order to establish connections with surrounding villages and to create a regional public focal point. Around the square are small shops selling local agricultural products and handicrafts, workshops that sustain traditional crafts, a small hostel for visitors, and a mosque that can also function as a gathering space for the community during emergencies. The school building is located at the entrance of the village, at a point that is easily accessible both from within the village and from the surrounding settlements.



**Controlled Livestock Routing**

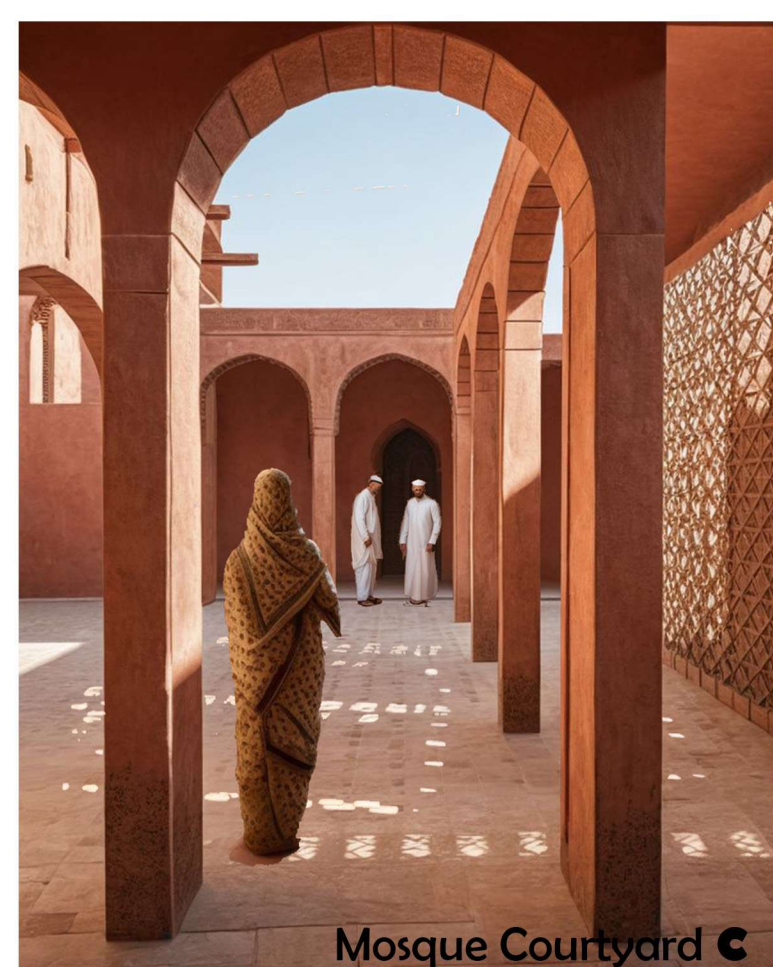
By strategically placing the barn units, this circulation network consolidates livestock entry and exit routes along specific axes, protecting the pedestrian fabric of the village.



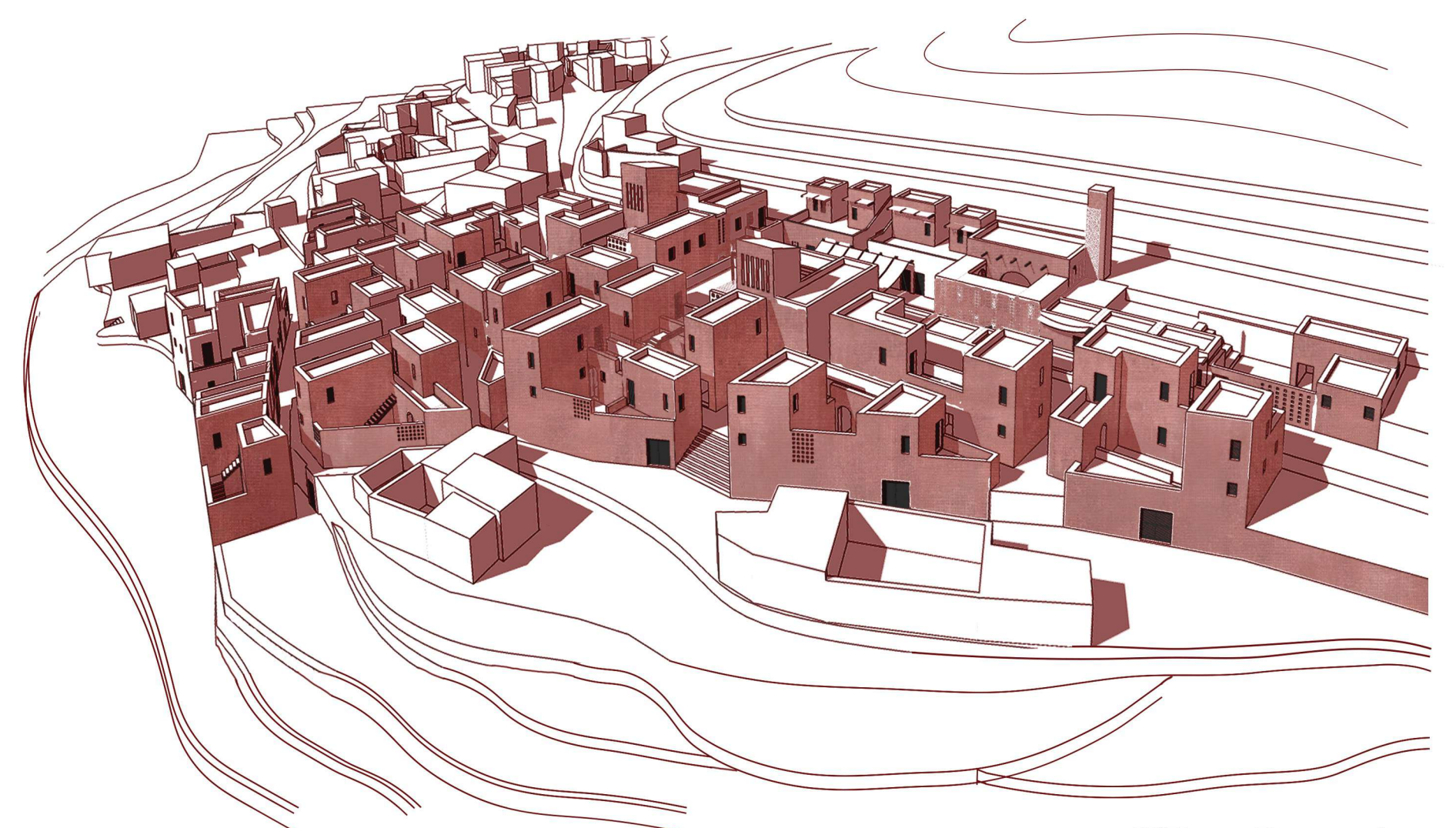
Craft Workshops Courtyard **A**



Communal Pocket Plazas **B**

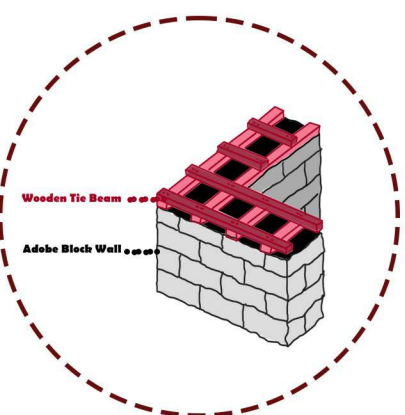


Mosque Courtyard **C**



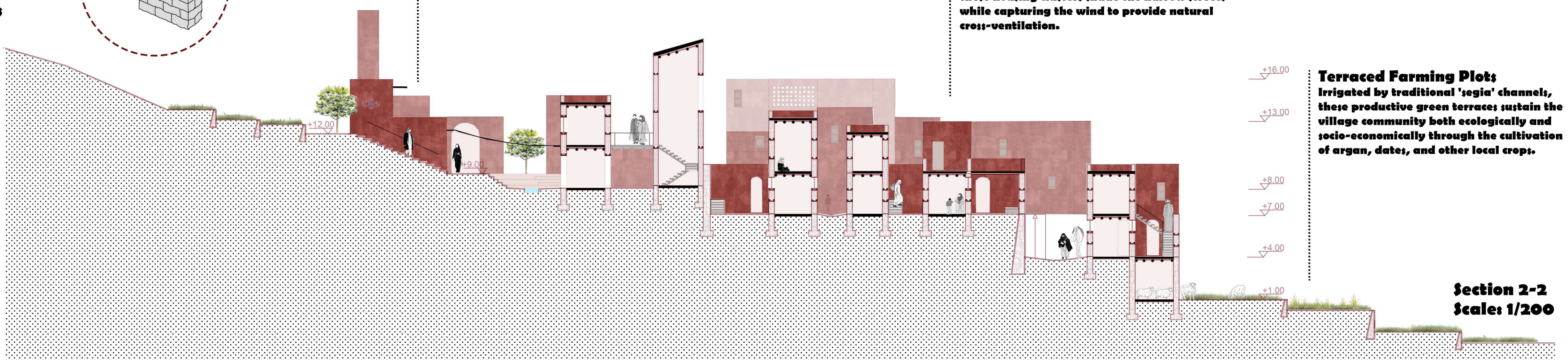
Village Perspective

**Wooden Tie Beam Strengthening System for Adobe Building:**



**The Zaouia Nexus**  
Reinterpreting the traditional Moroccan complex, this nexus acts as the socio-economic and cultural heart of the new settlement.

**The Contemporary Ksar**  
Reinterpreting the dense fabric of traditional Moroccan settlements with a modern approach, these housing clusters shade the narrow streets while capturing the wind to provide natural cross-ventilation.



**Terraced Farming Plots**  
Irrigated by traditional 'regia' channels, these productive green terraces sustain the village community both ecologically and socio-economically through the cultivation of argan, dates, and other local crops.

**Section 2-2**  
Scale: 1/200